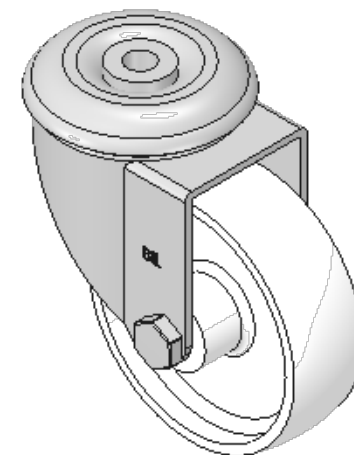
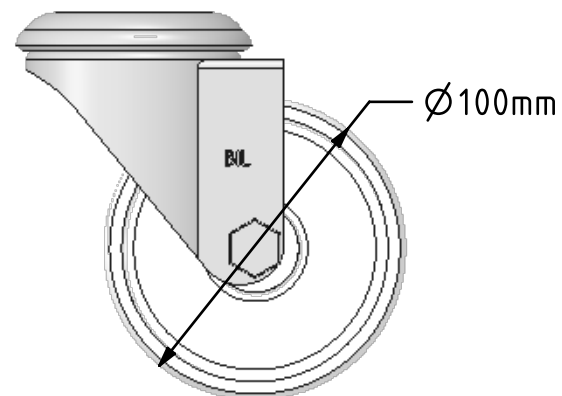
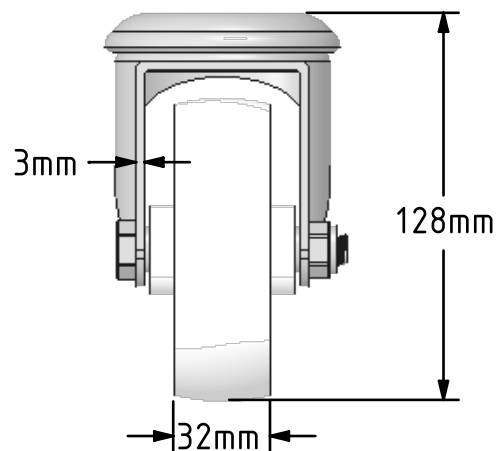
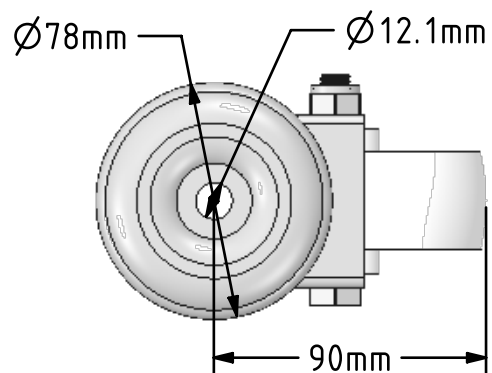


DRAWING DISCLAIMER
 COPYRIGHT OF THIS DRAWING IS RESERVED BY BIL GROUP LTD. IT IS ISSUED ON CONDITION THAT IT IS NOT REPRODUCED, COPIED, OR DISCLOSED TO A THIRD PARTY EITHER WHOLLY OR IN PART WITHOUT THE CONSENT IN WRITING OF BIL GROUP LTD.



Description:
 SSEH100NYBH12

Grade 304 Pressed stainless steel swivel castor with a 12mm bolt hole fitted with a white nylon wheel with a plain bearing. Wheel diameter 100mm, tread width 32mm, overall height 130mm, Load capacity 270kg



	NAME	DATE
DRAWN	Matt	05/01/17
APPROVED BY	Chris	05/01/17
SCALE	2:5	05/01/17
WEIGHT	0.766kg	05/01/17

UNLESS OTHERWISE SPECIFIED DIMENSIONS ARE IN MILLIMETRES

Unspecified Tolerances
 Machining ± 0.25mm
 Fabrication ± 1mm



BIL Group Ltd, Porte Marsh Road, Calne
 Wiltshire, SN11 9BW, United Kingdom
 Tel +44 (0)1249 822 222 Fax: +44 (0)1249 822 300
 www.bilgroup.co.uk

TITLE

SSEH100NYBH12

SIZE DWG NO.

A4

BILCW03SSEH100NYBH12_01

REV

1

FILE NAME

BILCW03SSEH100NYBH12_01.PDF

SHEET 1 OF 1