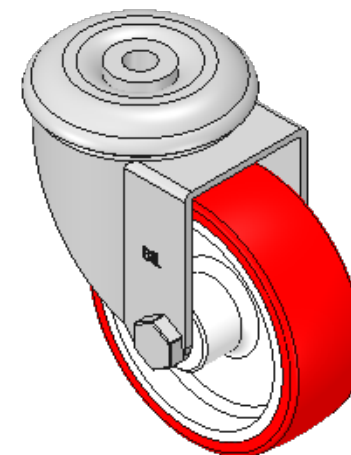
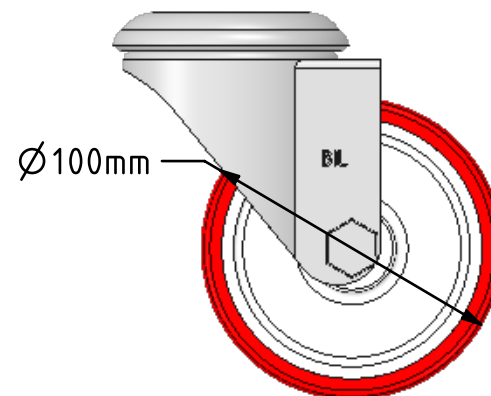
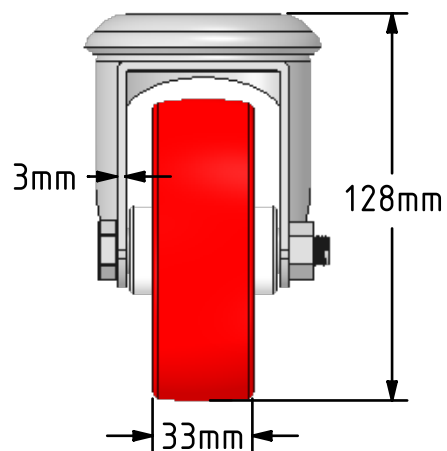
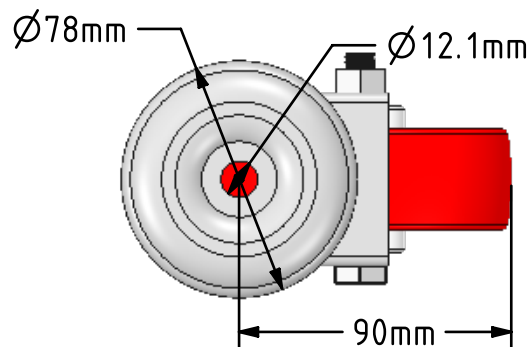



DRAWING DISCLAIMER  
 COPYRIGHT OF THIS DRAWING IS RESERVED BY BIL GROUP LTD. IT IS ISSUED ON CONDITION THAT IT IS NOT REPRODUCED, COPIED, OR DISCLOSED TO A THIRD PARTY EITHER WHOLLY OR IN PART WITHOUT THE CONSENT IN WRITING OF BIL GROUP LTD.



Description:  
 SSEH100NPBH12

Grade 304 Pressed stainless steel swivel castor with a 12mm bolt hole fitted with a red polyurethane tyred white nylon centred wheel with a plain bearing. Wheel diameter 100mm, tread width 33mm, overall height 130mm, Load capacity 250kg



	NAME	DATE	BIL Group Ltd, Porte Marsh Road, Calne Wiltshire, SN11 9BW, United Kingdom Tel +44 (0)1249 822 222 Fax: +44 (0)1249 822 300 www.bilgroup.co.uk	
DRAWN	Matt	15/03/18	 TITLE <b>SSEH100NPBH12</b>	
APPROVED BY	Tim W	15/03/18		
SCALE	2:5	15/03/18		
WEIGHT	0.826kg	15/03/18		
UNLESS OTHERWISE SPECIFIED DIMENSIONS ARE IN MILLIMETRES			SIZE	DWG NO.
Unspecified Tolerances Machining ± 0.25mm Fabrication ± 1mm			A4	BILCW03SSEH100NPBH12_01
			FILE NAME	BILCW03SSEH100NPBH12_01.PDF
			SHEET 1 OF 1	REV 1