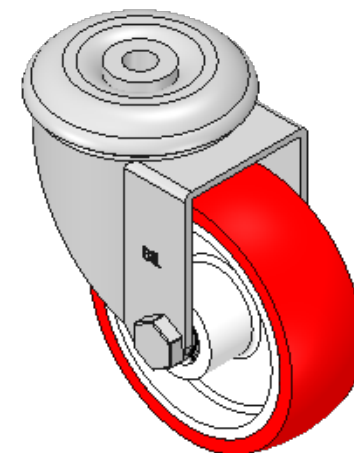
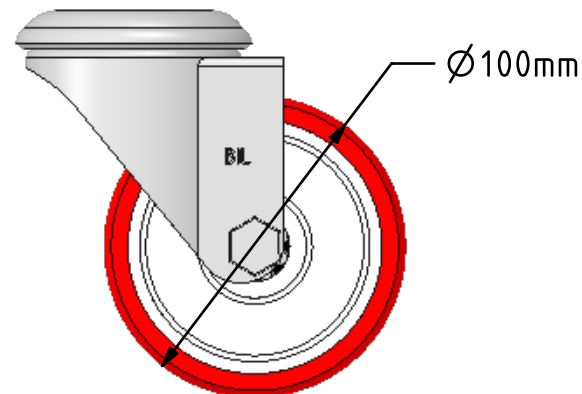
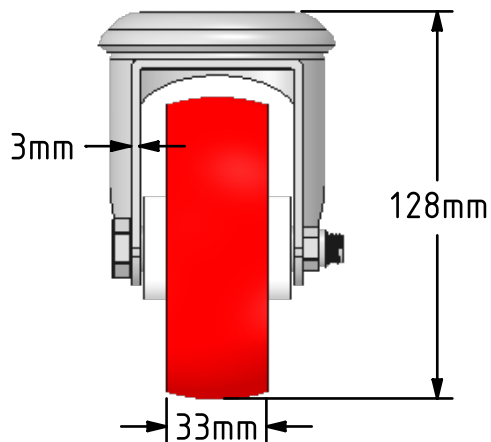
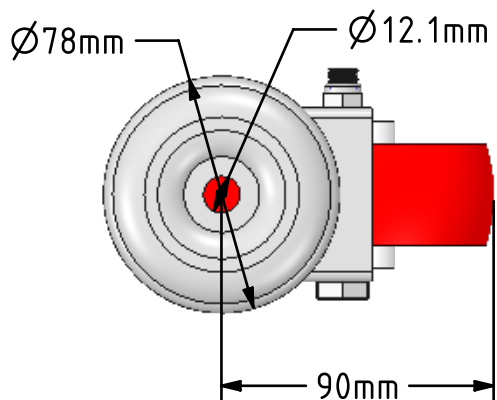



DRAWING DISCLAIMER
 COPYRIGHT OF THIS DRAWING IS RESERVED BY BIL GROUP LTD. IT IS ISSUED ON CONDITION THAT IT IS NOT REPRODUCED, COPIED, OR DISCLOSED TO A THIRD PARTY EITHER WHOLLY OR IN PART WITHOUT THE CONSENT IN WRITING OF BIL GROUP LTD.



Description:
 SSEH100NPBBH12

Grade 304 Pressed stainless steel swivel castor with a ± 12 mm bolt hole fitted with a red polyurethane tyred white nylon centred wheel with a roller bearing. Wheel diameter 100mm, tread width 33mm, overall height 130mm, Load capacity 250kg



	NAME	DATE	 BIL Group Ltd, Porte Marsh Road, Calne Wiltshire, SN11 9BW, United Kingdom Tel +44 (0)1249 822 222 Fax: +44 (0)1249 822 300 www.bilgroup.co.uk	
DRAWN	Matt	19/05/17	TITLE	
APPROVED BY	Chris	19/05/17	SSEH100NPBBH12	
SCALE	2:5	19/05/17	SIZE	DWG NO.
WEIGHT	0.857kg	19/05/17	A4	BILCW03SSEH100NPBBH12_01
UNLESS OTHERWISE SPECIFIED DIMENSIONS ARE IN MILLIMETRES			REV	1
Unspecified Tolerances Machining ± 0.25 mm Fabrication ± 1 mm			FILE NAME	BILCW03SSEH100NPBBH12_01.PDF SHEET 1 OF 1