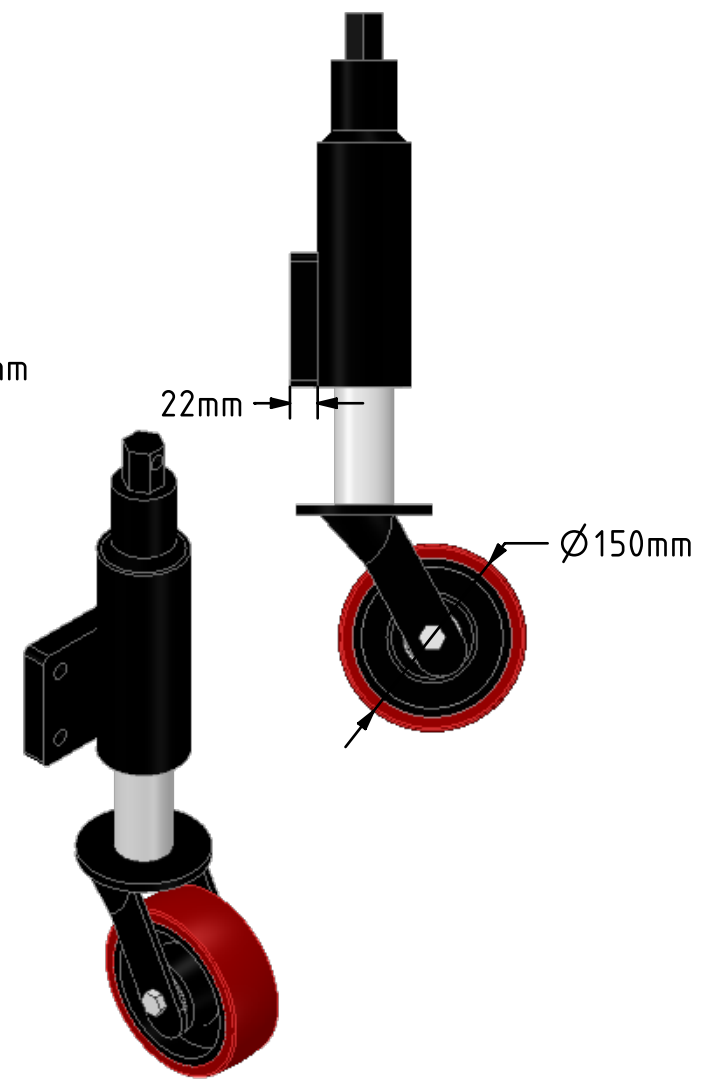
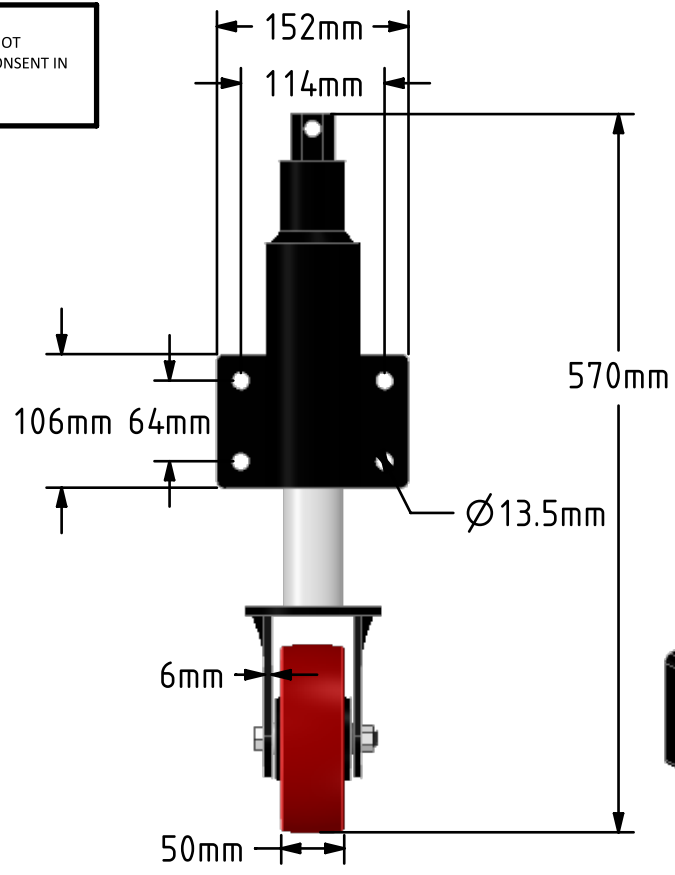
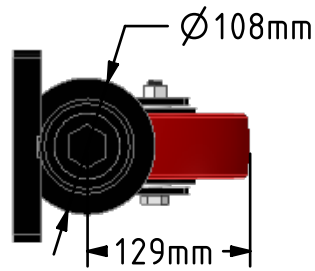
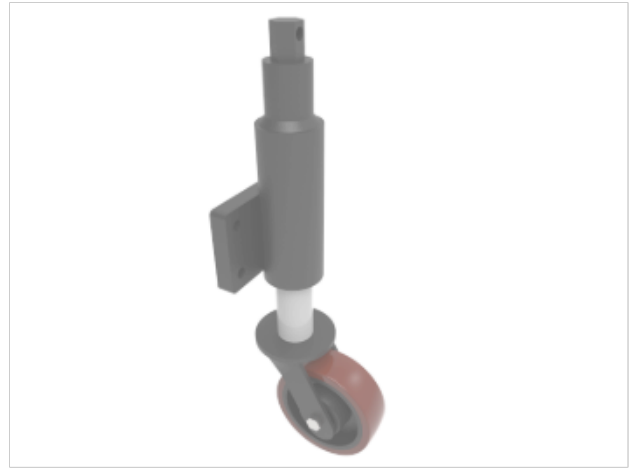


DRAWING DISCLAIMER  
 COPYRIGHT OF THIS DRAWING IS RESERVED BY BIL GROUP LTD. IT IS ISSUED ON CONDITION THAT IT IS NOT REPRODUCED, COPIED, OR DISCLOSED TO A THIRD PARTY EITHER WHOLLY OR IN PART WITHOUT THE CONSENT IN WRITING OF BIL GROUP LTD.



Description:  
 JAZXXHK150PTBJ  
 Fabricated 75mm lift swivel jacking bracket with fixing plate fitted with a brown polyurethane tyre cast iron centred wheel with ball bearings. Wheel diameter 150mm, tread width 50mm, overall height 570mm, plate size 152mm x 106mm, hole centres 114mm x 64mm Load capacity 750kg.



	NAME	DATE
DRAWN	Matt	08/04/19
APPROVED BY	Chris	08/04/19
SCALE	1:6	08/04/19
WEIGHT	15.199kg	08/04/19

UNLESS OTHERWISE SPECIFIED DIMENSIONS ARE IN MILLIMETRES  
 Unspecified Tolerances  
 Machining ± 0.25mm  
 Fabrication ± 1mm

**BIL**  
 BIL Group Ltd, Porte Marsh Road, Calne  
 Wiltshire, SN11 9BW, United Kingdom  
 Tel +44 (0)1249 822 222 Fax: +44 (0)1249 822 300  
 www.bilgroup.co.uk

TITLE  
**JAZXXHK150PTBJ**

SIZE	DWG NO.	REV
A4	BILCW03JAZXXHK150PTBJ_02	2

FILE NAME BILCW03JAZXXHK150PTBJ\_02.PDF SHEET 1 OF 1