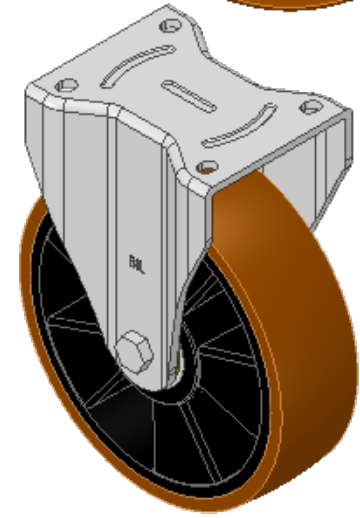
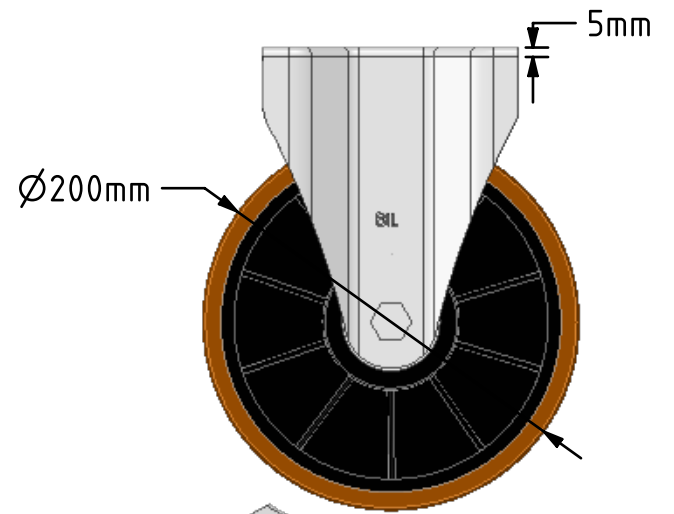
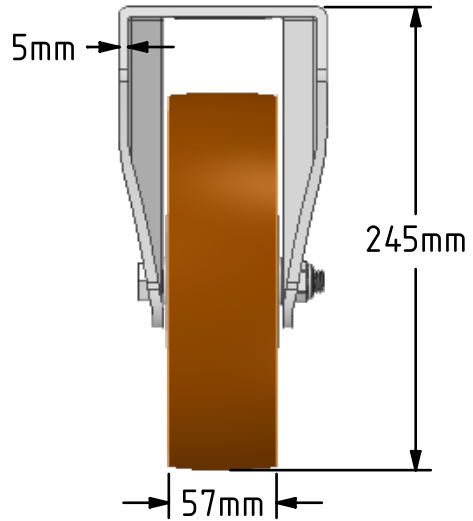
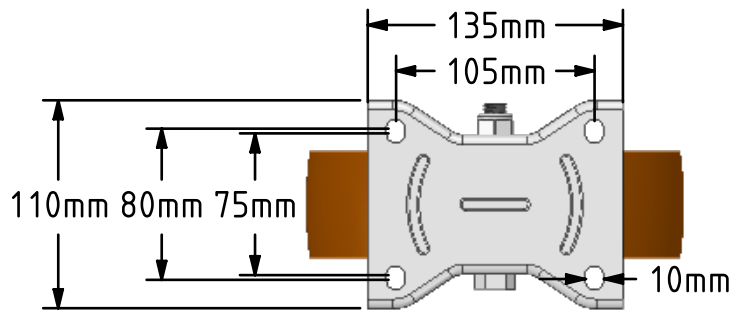


DRAWING DISCLAIMER
 COPYRIGHT OF THIS DRAWING IS RESERVED BY BIL GROUP LTD. IT IS ISSUED ON CONDITION THAT IT IS NOT REPRODUCED, COPIED, OR DISCLOSED TO A THIRD PARTY EITHER WHOLLY OR IN PART WITHOUT THE CONSENT IN WRITING OF BIL GROUP LTD.



Description:
 BZXPF200XPBJ
 Pressed fixed castor with a top plate fixing fitted with a brown polyurethane tyre nylon centred wheel with ball bearings, Wheel diameter 200mm, tread width 57mm, overall height 245mm, top plate 135mm x 110mm, hole centres 105mm x 80/75mm. Load capacity 800kg.



| | NAME | DATE |
|-------------|---------|----------|
| DRAWN | Matt | 01/03/19 |
| APPROVED BY | Chris | 01/03/19 |
| SCALE | 1:4 | 01/03/19 |
| WEIGHT | 3.279kg | 01/03/19 |

BIL BIL Group Ltd, Porte Marsh Road, Calne
 Wiltshire, SN11 9BW, United Kingdom
 Tel +44 (0)1249 822 222 Fax: +44 (0)1249 822 300
 www.bilgroup.co.uk

UNLESS OTHERWISE SPECIFIED DIMENSIONS ARE IN MILLIMETRES
 Unspecified Tolerances
 Machining ± 0.25mm
 Fabrication ± 1mm

| | | |
|--------------|-----------------------------------|---|
| TITLE | | REV 1 |
| BZXPF200XPBJ | | |
| SIZE A4 | DWG NO. BILCW03BZXPF200XPBJ_01 | FILE NAME BILCW03BZXPF200XPBJ_01.PDF |
| | | SHEET 1 OF 1 |