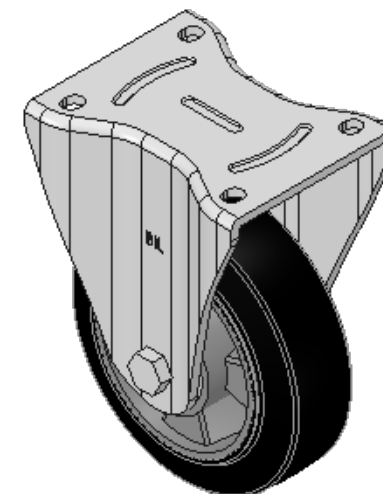
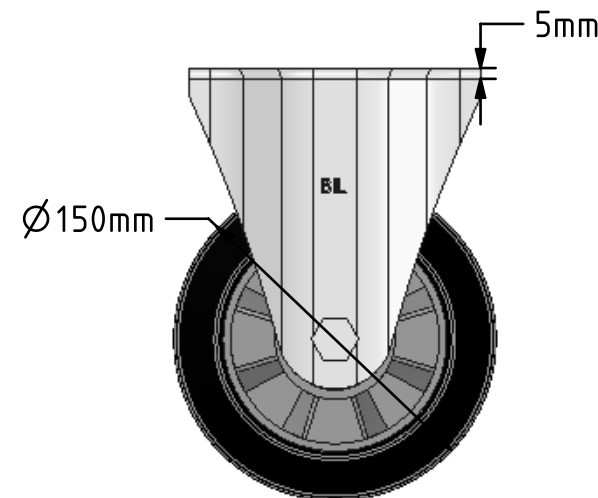
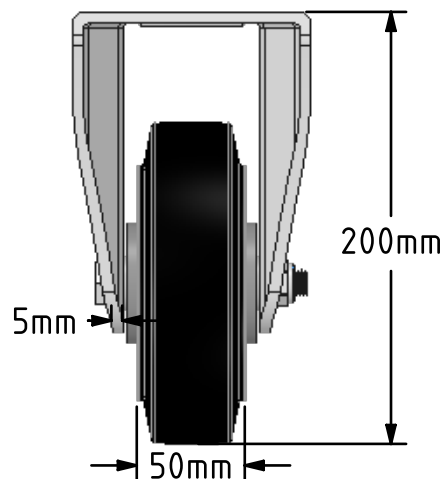
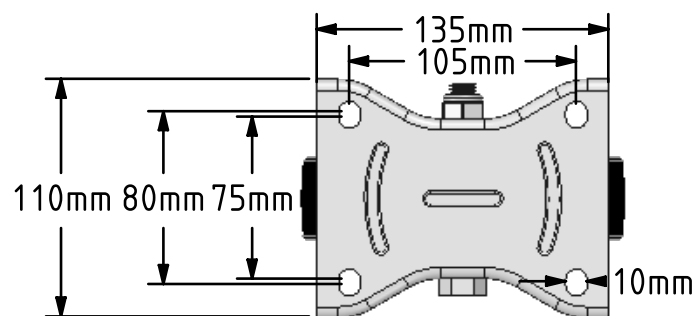



**DRAWING DISCLAIMER**

COPYRIGHT OF THIS DRAWING IS RESERVED BY BIL GROUP LTD. IT IS ISSUED ON CONDITION THAT IT IS NOT REPRODUCED, COPIED, OR DISCLOSED TO A THIRD PARTY EITHER WHOLLY OR IN PART WITHOUT THE CONSENT IN WRITING OF BIL GROUP LTD.

**Description:**  
BZXPF150ERBJ

Pressed steel fixed castor with a top plate fixing fitted with a black high elastic 65 shore A rubber tyred wheel aluminium centre with ball bearings. Wheel diameter 150mm, tread width 50mm, overall height 200mm, top plate 135mm x 110mm, hole centres 105mm x 80/75mm. Load capacity 350kg at 4kph and 140kg at 16kph. REACH compliant also PAH-Free rubber to confirm to EU-directive 2005/69/EC



	NAME	DATE	 BIL Group Ltd, Porte Marsh Road, Calne Wiltshire, SN11 9BW, United Kingdom Tel +44 (0)1249 822 222 Fax: +44 (0)1249 822 300 www.bilgroup.co.uk		
DRAWN	Matt	26/02/18			
APPROVED BY	Kevin	26/02/18			
SCALE	2:1	26/02/18			
WEIGHT	2.64kg	26/02/18			
UNLESS OTHERWISE SPECIFIED DIMENSIONS ARE IN MILLIMETRES			TITLE		
Unspecified Tolerances Machining $\pm 0.25\text{mm}$ Fabrication $\pm 1\text{mm}$			BZXPF150ERBJ		
			SIZE	DWG NO.	REV
			A4	BILCW03BZXPF150ERBJ_01	1
			FILE NAME BILCW03BZXPF150ERBJ_01.PDF SHEET 1 OF 1		