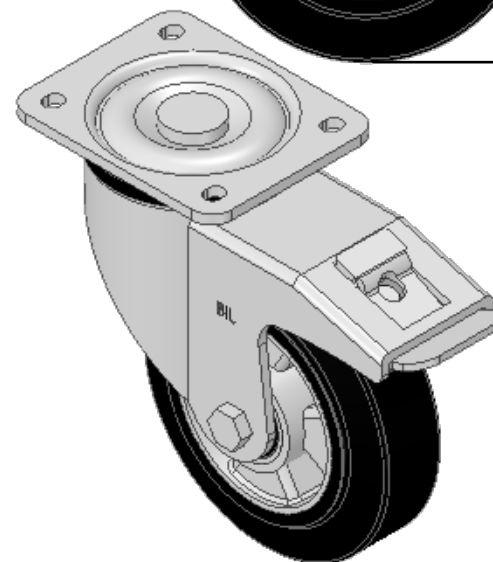
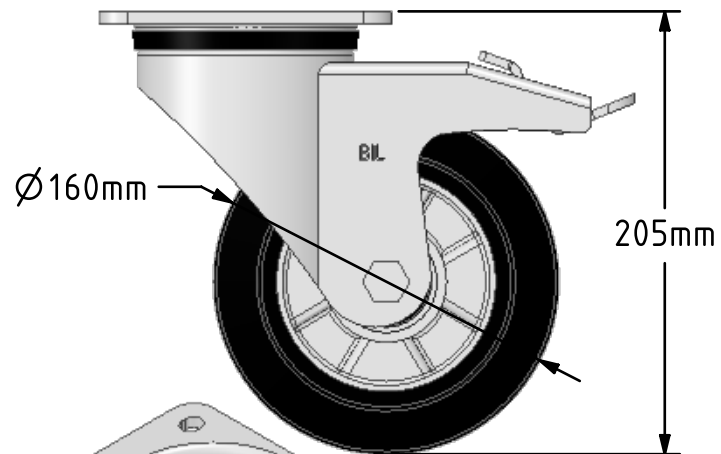
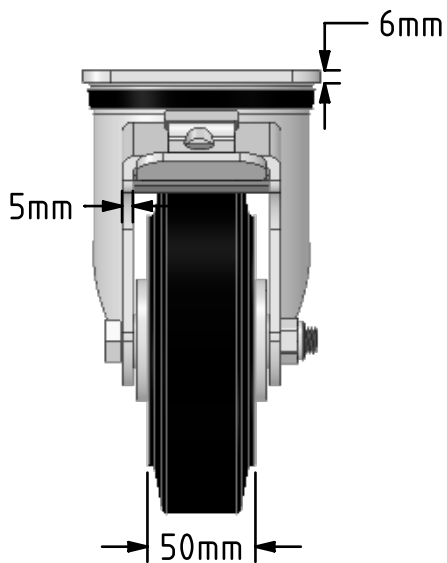
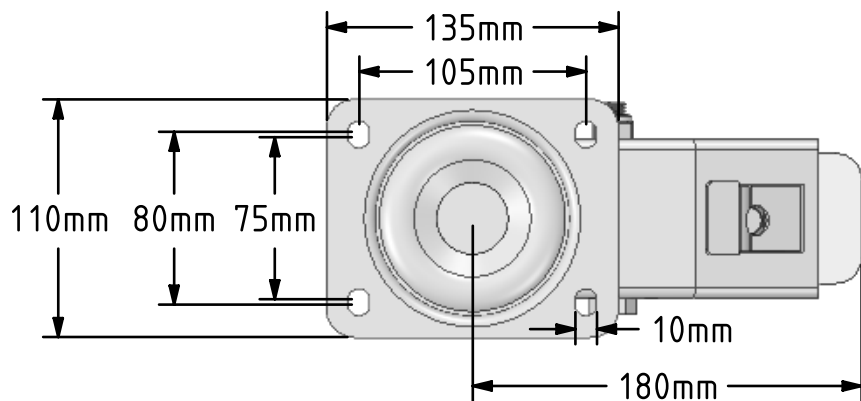


DRAWING DISCLAIMER
 COPYRIGHT OF THIS DRAWING IS RESERVED BY BIL GROUP LTD. IT IS ISSUED ON CONDITION THAT IT IS NOT REPRODUCED, COPIED, OR DISCLOSED TO A THIRD PARTY EITHER WHOLLY OR IN PART WITHOUT THE CONSENT IN WRITING OF BIL GROUP LTD.



Description:
 BZXP160ERBJSWB

Pressed steel swivel castor with a top plate fixing fitted with a black high elastic 65 shore A rubber tyre wheel aluminium centre with ball bearings and a total lock brake. Wheel diameter 160mm, tread width 50mm, overall height 205mm, top plate 135mm x 110mm, hole centres 105mm x 80/75mm. Load capacity 400kg at 4kph and 160kg at 10kph. REACH compliant also PAH-Free rubber to confirm to EU-directive 2005/69/EC



	NAME	DATE
DRAWN	Matt	28/02/19
APPROVED BY	Chris	28/02/19
SCALE	2:7	28/02/19
WEIGHT	4.283kg	28/02/19



BIL Group Ltd, Porte Marsh Road, Calne
 Wiltshire, SN11 9BW, United Kingdom
 Tel +44 (0)1249 822 222 Fax: +44 (0)1249 822 300
 www.bilgroup.co.uk

TITLE

BZXP160ERBJSWB

UNLESS OTHERWISE SPECIFIED DIMENSIONS ARE IN MILLIMETRES

Unspecified Tolerances
 Machining ± 0.25mm
 Fabrication ± 1mm

SIZE	DWG NO.	REV
A4	BILCW03BZXP160ERBJSWB_01	1

FILE NAME BILCW03BZXP160ERBJSWB_01.PDF SHEET 1 OF 1