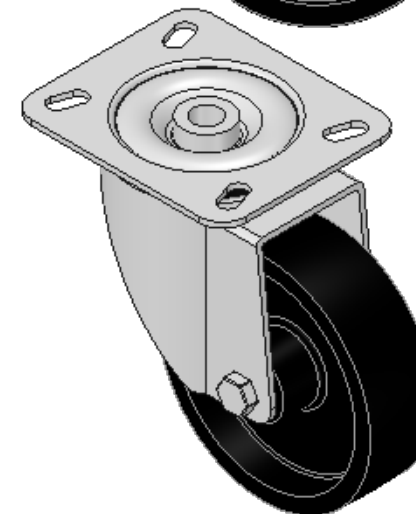
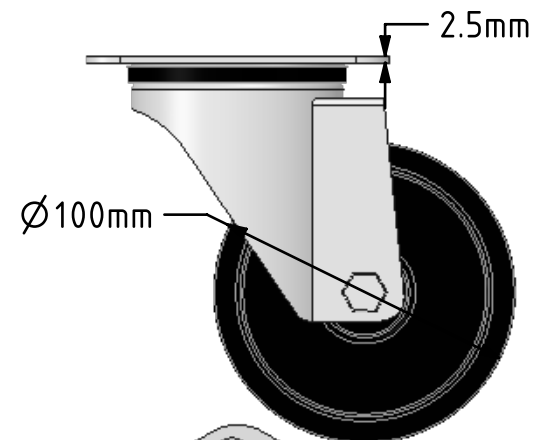
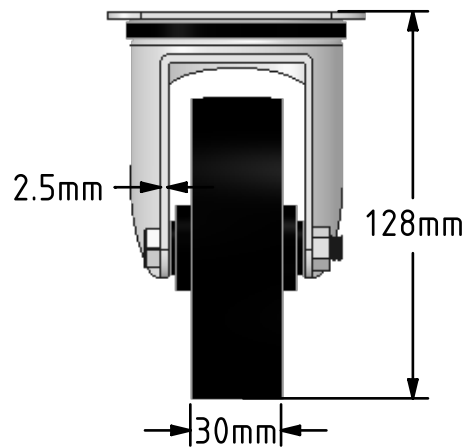
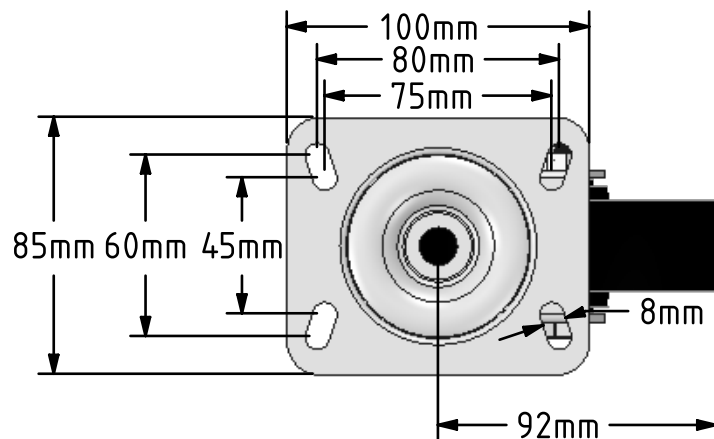


DRAWING DISCLAIMER
 COPYRIGHT OF THIS DRAWING IS RESERVED BY BIL GROUP LTD. IT IS ISSUED ON CONDITION THAT IT IS NOT REPRODUCED, COPIED, OR DISCLOSED TO A THIRD PARTY EITHER WHOLLY OR IN PART WITHOUT THE CONSENT IN WRITING OF BIL GROUP LTD.



Description:
 BZXM100TP3TF

Pressed steel swivel castor with a top plate fixing fitted with a 300oC black thermoplastic wheel with teflon bushes. Wheel diameter 100mm, tread width 30mm, overall height 128mm, top plate 105mm x 80mm, hole centres 80mm x 60mm or 75mm x 45mm. Load capacity 200kg.



	NAME	DATE
DRAWN	Matt	21/03/18
APPROVED BY	Tim W	21/03/18
SCALE	2:5	21/03/18
WEIGHT	0.734kg	21/03/18

 BIL Group Ltd, Porte Marsh Road, Calne
 Wiltshire, SN11 9BW, United Kingdom
 Tel +44 (0)1249 822 222 Fax: +44 (0)1249 822 300
 www.bilgroup.co.uk

TITLE	
BZXM100TP3TF	

UNLESS OTHERWISE SPECIFIED DIMENSIONS ARE IN MILLIMETRES		SIZE	DWG NO.	REV
Unspecified Tolerances Machining ± 0.25mm Fabrication ± 1mm		A4	BILCW03BZXM100TP3TF_01	1
FILE NAME		SHEET 1 OF 1		