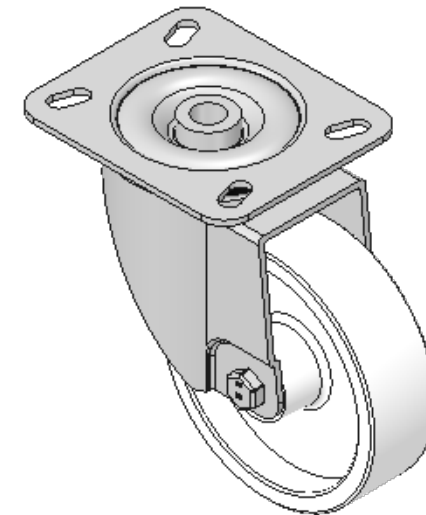
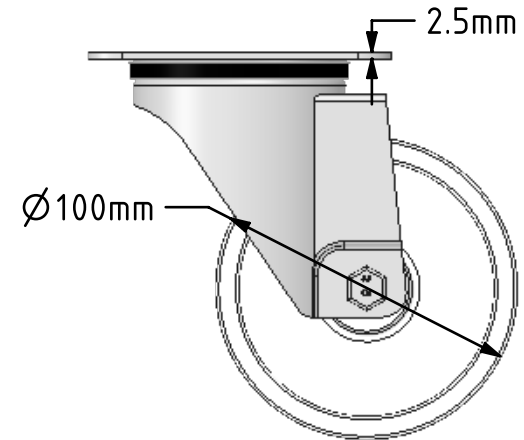
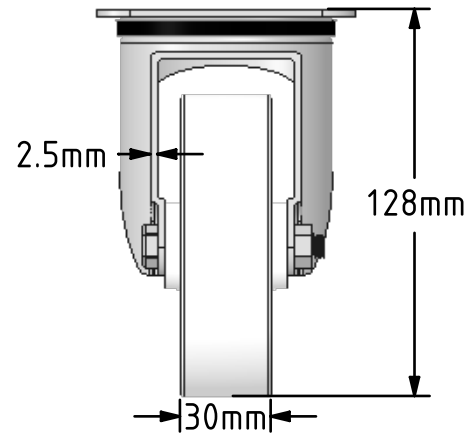
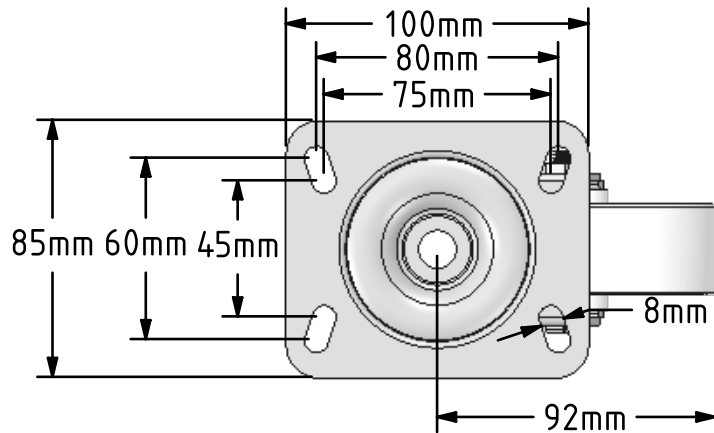


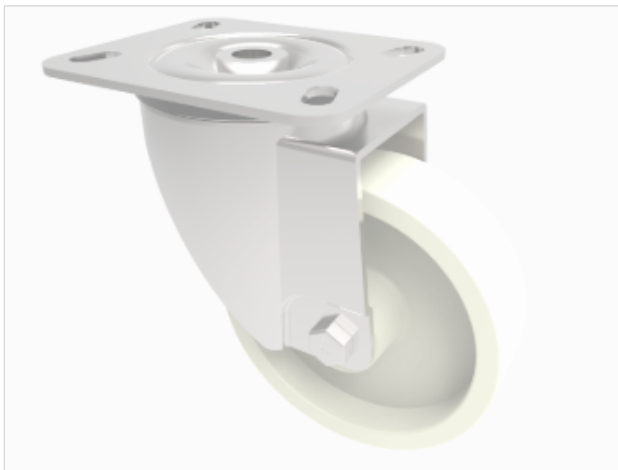
DRAWING DISCLAIMER


COPYRIGHT OF THIS DRAWING IS RESERVED BY BIL GROUP LTD. IT IS ISSUED ON CONDITION THAT IT IS NOT REPRODUCED, COPIED, OR DISCLOSED TO A THIRD PARTY EITHER WHOLLY OR IN PART WITHOUT THE CONSENT IN WRITING OF BIL GROUP LTD.

**Description:**

BZXM100NYHT

Pressed steel swivel castor with a top plate fixing fitted with a off white nylon wheel with a plain bearing . Wheel diameter 100mm, tread width 30mm, overall height 128mm, top plate 100mm x 85mm, hole centres 80mm x 60mm or 75mm x 45mm. Load capacity 210kg at a maximum 150c.



	NAME	DATE	 BIL Group Ltd, Porte Marsh Road, Calne Wiltshire, SN11 9BW, United Kingdom Tel +44 (0)1249 822 222 Fax: +44 (0)1249 822 300 www.bilgroup.co.uk		
DRAWN	Matt	22/03/18			
APPROVED BY	Tim W	22/03/18			
SCALE	2.5	22/03/18			
WEIGHT	0.729kg	22/03/18			
UNLESS OTHERWISE SPECIFIED DIMENSIONS ARE IN MILLIMETRES			TITLE		
Unspecified Tolerances Machining $\pm 0.25\text{mm}$ Fabrication $\pm 1\text{mm}$			BZXM100NYHT		
			SIZE	DWG NO.	REV
			A4	BILCW03BZXM100NYHT_01	1
			FILE NAME BILCW03BZXM100NYHT_01.PDF SHEET 1 OF 1		