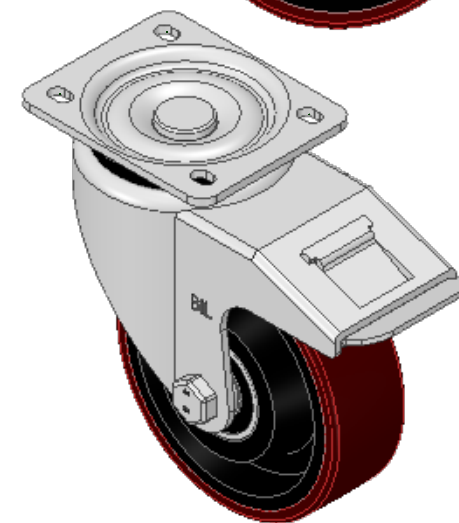
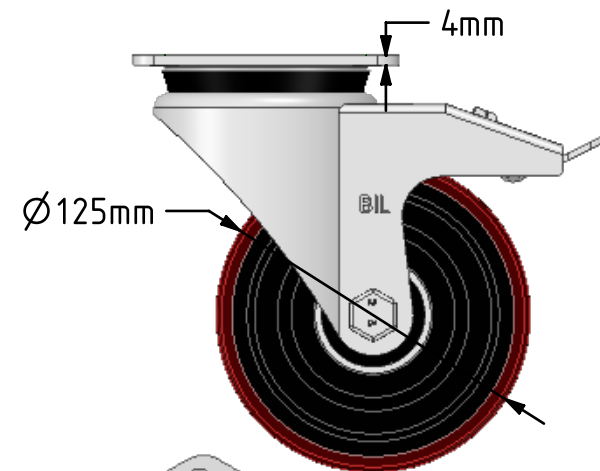
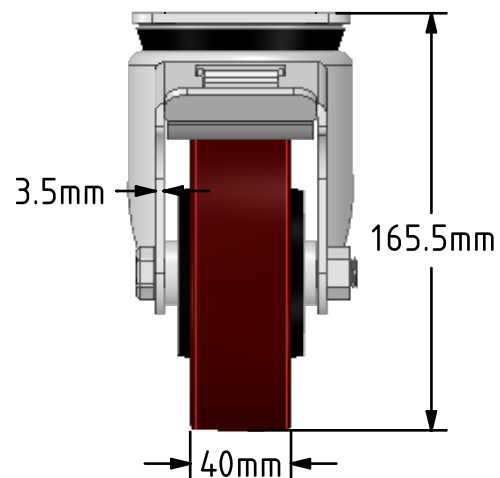
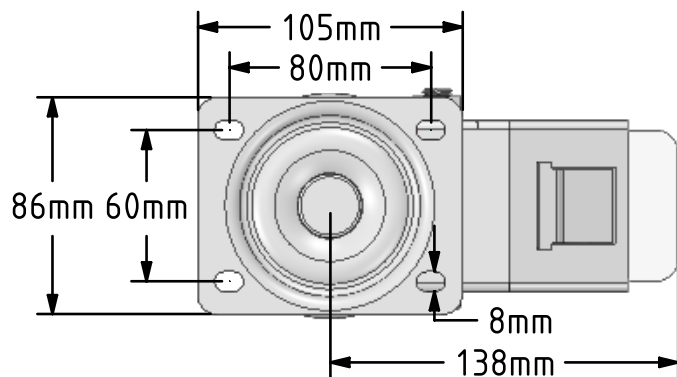


DRAWING DISCLAIMER
 COPYRIGHT OF THIS DRAWING IS RESERVED BY BIL GROUP LTD. IT IS ISSUED ON CONDITION THAT IT IS NOT REPRODUCED, COPIED, OR DISCLOSED TO A THIRD PARTY EITHER WHOLLY OR IN PART WITHOUT THE CONSENT IN WRITING OF BIL GROUP LTD.



Description:
 BZWH125PTBJSWB

Pressed steel swivel castor with a top plate fixing fitted with a brown polyurethane tyre on a cast iron centred wheel with ball bearings and total lock brake. Wheel diameter 125mm, tread width 40mm, overall height 165mm, top plate 105mm x 86mm, hole centres 80mm x 60mm. Load capacity 400kg.



	NAME	DATE
DRAWN	Matt	02/01/19
APPROVED BY	Tim W	02/01/19
SCALE	1:3	02/01/19
WEIGHT	3.274kg	02/01/19

UNLESS OTHERWISE SPECIFIED DIMENSIONS ARE IN MILLIMETRES

Unspecified Tolerances
 Machining ± 0.25mm
 Fabrication ± 1mm



BIL Group Ltd, Porte Marsh Road, Calne
 Wiltshire, SN11 9BW, United Kingdom
 Tel +44 (0)1249 822 222 Fax: +44 (0)1249 822 300
 www.bilgroup.co.uk

TITLE

BZWH125PTBJSWB

SIZE DWG NO.

A4

BILCW03BZWH125PTBJSWB_01

REV

1

FILE NAME BILCW03BZWH125PTBJSWB_01.PDF SHEET 1 OF 1