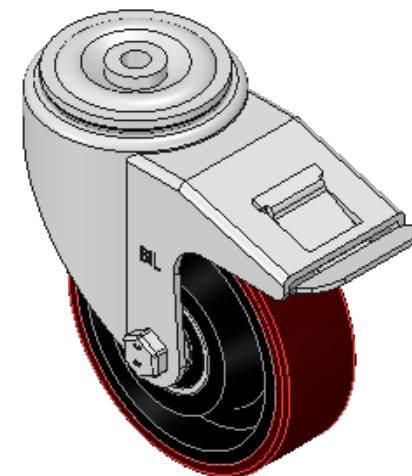
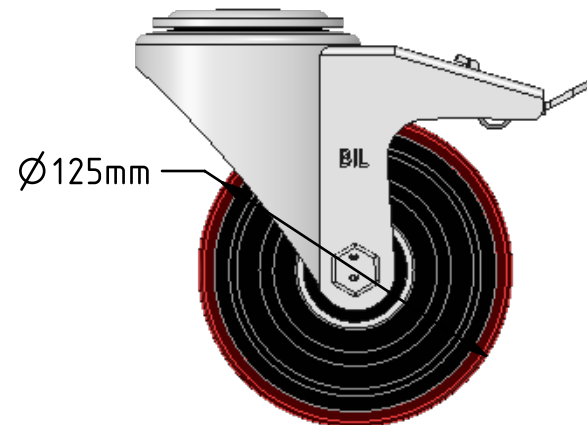
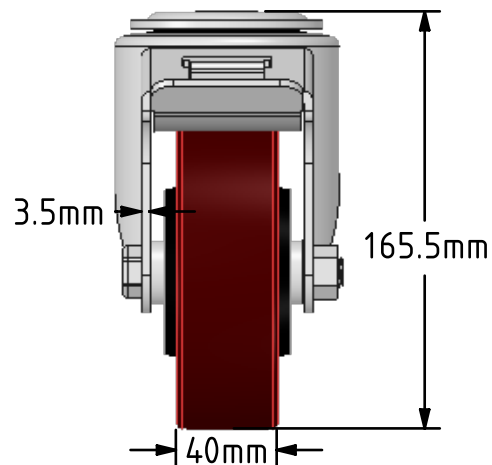
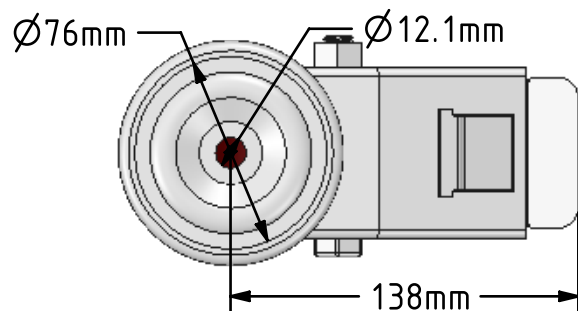


DRAWING DISCLAIMER
 COPYRIGHT OF THIS DRAWING IS RESERVED BY BIL GROUP LTD. IT IS ISSUED ON CONDITION THAT IT IS NOT REPRODUCED, COPIED, OR DISCLOSED TO A THIRD PARTY EITHER WHOLLY OR IN PART WITHOUT THE CONSENT IN WRITING OF BIL GROUP LTD.



Description:
 BZWH125PTBJBH12SWB

Pressed steel swivel castor with a 12mm bolt hole fitted with a brown polyurethane tyre on a cast iron centred wheel with ball bearings and total lock brake. Wheel diameter 125mm, tread width 40mm, overall height 165mm, Load capacity 400kg.



	NAME	DATE
DRAWN	Matt	15/02/18
APPROVED BY	Tim W	15/02/18
SCALE	1:3	15/02/18
WEIGHT	3.135kg	15/02/18

UNLESS OTHERWISE SPECIFIED DIMENSIONS ARE IN MILLIMETRES

Unspecified Tolerances
 Machining ± 0.25mm
 Fabrication ± 1mm



BIL Group Ltd, Porte Marsh Road, Calne
 Wiltshire, SN11 9BW, United Kingdom
 Tel +44 (0)1249 822 222 Fax: +44 (0)1249 822 300
 www.bilgroup.co.uk

TITLE

BZWH125PTBJBH12SWB

SIZE

DWG NO.

A4

BILCW03BZWH125PTBJBH12SWB_01

REV

1

FILE NAME BILCW03BZWH125PTBJBH12SWB_01.PDF SHEET 1 OF 1