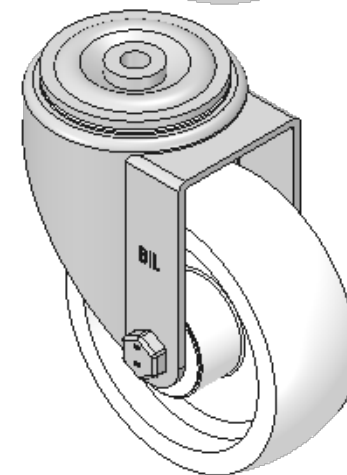
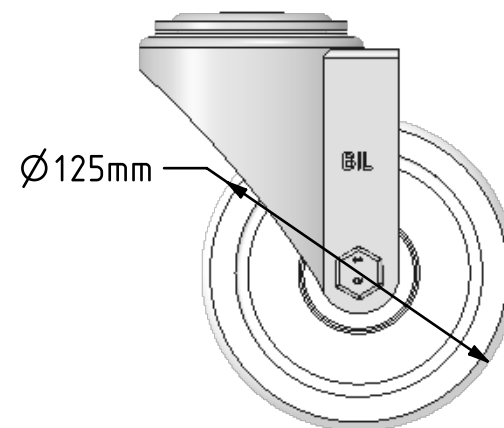
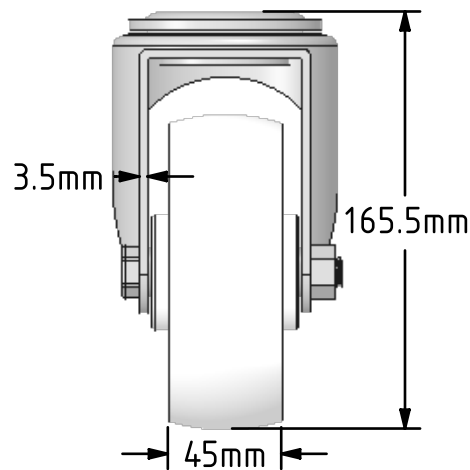
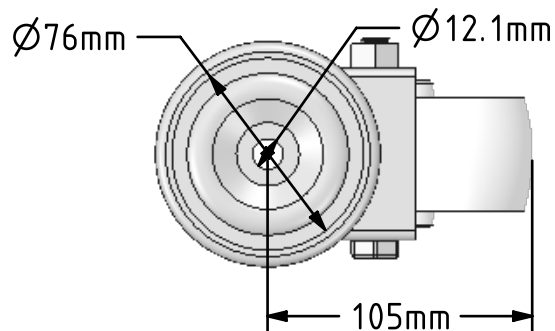



DRAWING DISCLAIMER
 COPYRIGHT OF THIS DRAWING IS RESERVED BY BIL GROUP LTD. IT IS ISSUED ON CONDITION THAT IT IS NOT REPRODUCED, COPIED, OR DISCLOSED TO A THIRD PARTY EITHER WHOLLY OR IN PART WITHOUT THE CONSENT IN WRITING OF BIL GROUP LTD.



Description:
 BZWH125NYBH12

Pressed steel swivel castor with a 12 mm bolt hole fitted with a white nylon wheel with plain bearing. Wheel diameter 125mm, tread width 45mm, overall height 165mm, Load capacity 400kg.



| | | | |
|---|-------------------------|----------|---|
| | NAME | DATE |  BIL Group Ltd, Porte Marsh Road, Calne Wiltshire, SN11 9BW, United Kingdom Tel +44 (0)1249 822 222 Fax: +44 (0)1249 822 300 www.bilgroup.co.uk |
| DRAWN | Matt | 15/02/18 | |
| APPROVED BY | Tim W | 15/02/18 | |
| SCALE | 1:3 | 15/02/18 | |
| WEIGHT | 1.303kg | 15/02/18 | |
| UNLESS OTHERWISE SPECIFIED DIMENSIONS ARE IN MILLIMETRES Unspecified Tolerances Machining ± 0.25mm Fabrication ± 1mm | | | TITLE BZWH125NYBH12 |
| SIZE | DWG NO. | | REV |
| A4 | BILCW03BZWH125NYBH12_01 | | 1 |
| FILE NAME BILCW03BZWH125NYBH12_01.PDF | | | SHEET 1 OF 1 |