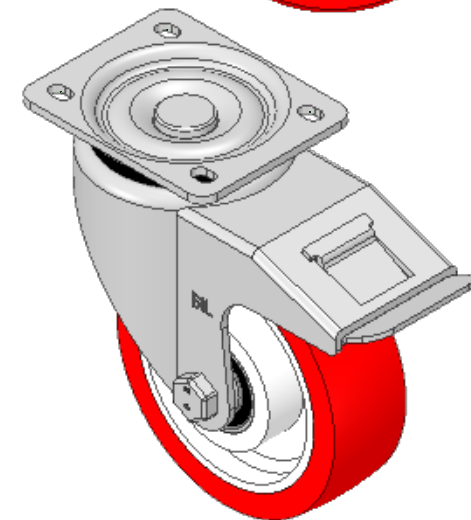
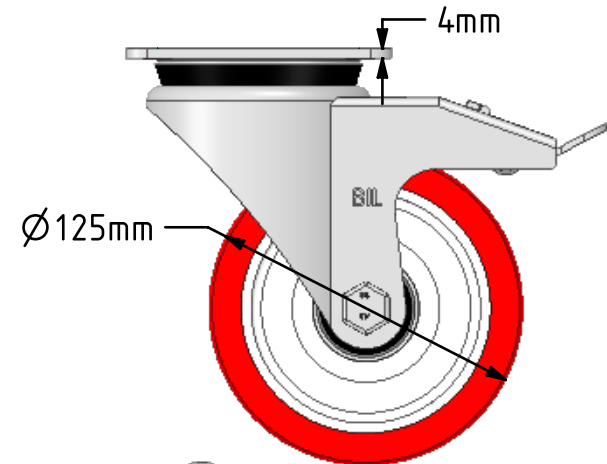
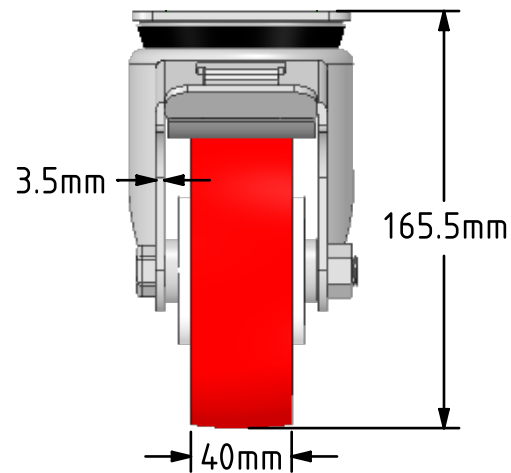
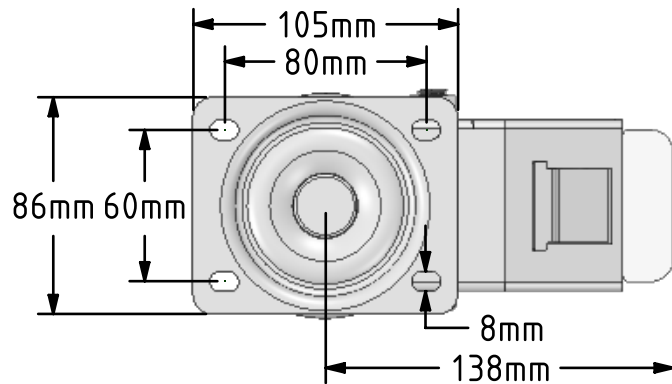


DRAWING DISCLAIMER


COPYRIGHT OF THIS DRAWING IS RESERVED BY BIL GROUP LTD. IT IS ISSUED ON CONDITION THAT IT IS NOT REPRODUCED, COPIED, OR DISCLOSED TO A THIRD PARTY EITHER WHOLLY OR IN PART WITHOUT THE CONSENT IN WRITING OF BIL GROUP LTD.

**Description:**

BZWH125NPBJSWB

Pressed steel swivel castor with a top plate fixing fitted with a red polyurethane tyre white nylon centred wheel with ball bearings and total lock brake. Wheel diameter 125mm, tread width 40mm, overall height 165mm, top plate 105mm x 86mm, hole centres 80mm x 60mm. Load capacity 350kg



	NAME	DATE	 <div>BIL Group Ltd, Porte Marsh Road, Calne Wiltshire, SN11 9BW, United Kingdom Tel +44 (0)1249 822 222 Fax: +44 (0)1249 822 300 www.bilgroup.co.uk</div>		
DRAWN	Matt	02/01/19			
APPROVED BY	Tim W	02/01/19	TITLE BZWH125NPBJSWB		
SCALE	1:3	02/01/19			
WEIGHT	1.893kg	02/01/19	SIZE DWG NO. A4 BILCW03BZWH125NPBJSWB__01		
UNLESS OTHERWISE SPECIFIED DIMENSIONS ARE IN MILLIMETRES					
Unspecified Tolerances Machining ± 0.25mm Fabrication ± 1mm			REV 1		
			FILE NAME BILCW03BZWH125NPBJSWB__01.PDF SHEET 1 OF 1		