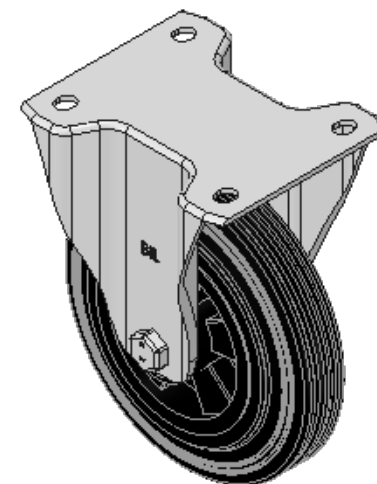
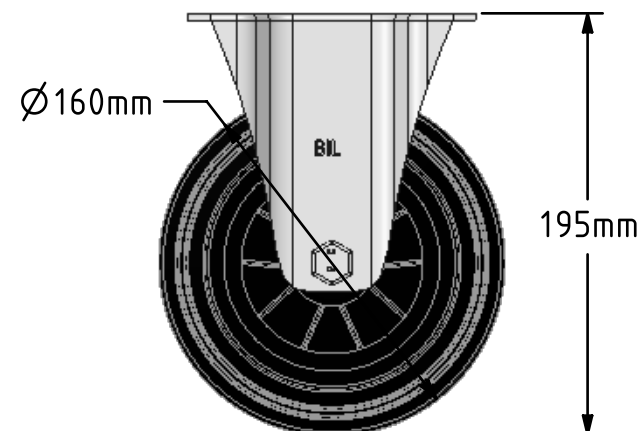
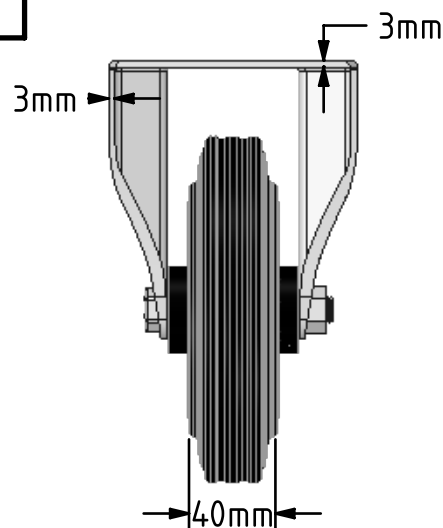
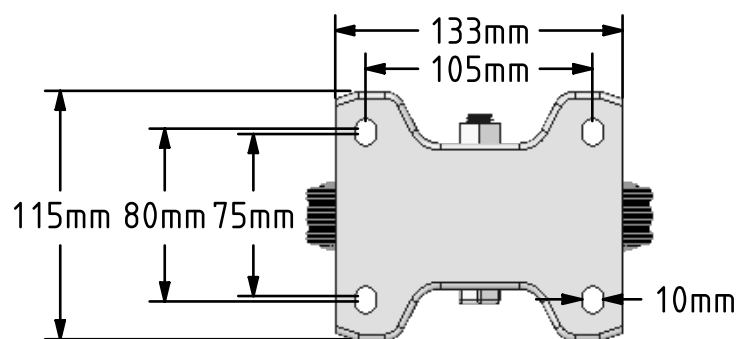


DRAWING DISCLAIMER

COPYRIGHT OF THIS DRAWING IS RESERVED BY BIL GROUP LTD. IT IS ISSUED ON CONDITION THAT IT IS NOT REPRODUCED, COPIED, OR DISCLOSED TO A THIRD PARTY EITHER WHOLLY OR IN PART WITHOUT THE CONSENT IN WRITING OF BIL GROUP LTD.

**Description:**

BZWBF160PSB

Pressed steel fixed castor with a top plate fixing fitted with a black rubber tyre black polypropylene centred wheel with a roller bearing. Wheel diameter 160mm, tread width 40mm, overall height 195mm, top plate 133mm x 115mm, hole centres 105mm x 80/75mm. Load capacity 140kg.



	NAME	DATE
DRAWN	Matt	13/07/18
APPROVED BY	Chris	13/07/18
SCALE	2:1	13/07/18
WEIGHT	1.695kg	13/07/18

UNLESS OTHERWISE SPECIFIED DIMENSIONS ARE IN MILLIMETRES

Unspecified Tolerances
Machining $\pm 0.25\text{mm}$
Fabrication $\pm 1\text{mm}$



BIL Group Ltd, Porte Marsh Road, Calne
Wiltshire, SN11 9BW, United Kingdom
Tel +44 (0)1249 822 222 Fax: +44 (0)1249 822 300
www.bilgroup.co.uk

TITLE

BZWBF160PSB

SIZE DWG NO.

A4

BILCW03BZWBF160PSB__01

REV

1

FILE NAME BILCW03BZWBF160PSB__01.PDF

SHEET 1 OF 1