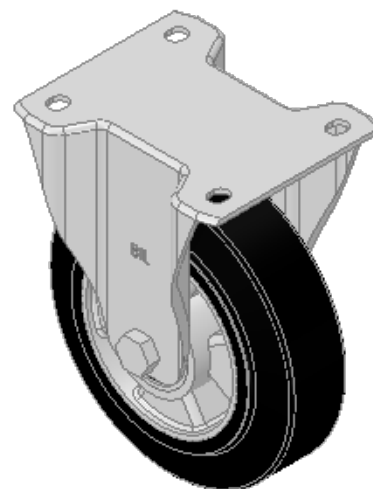
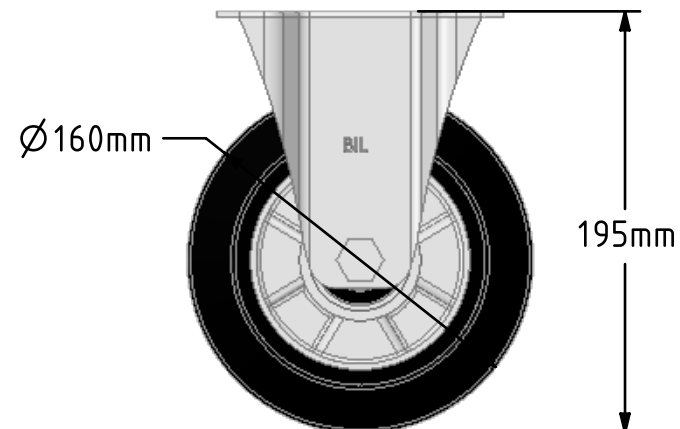
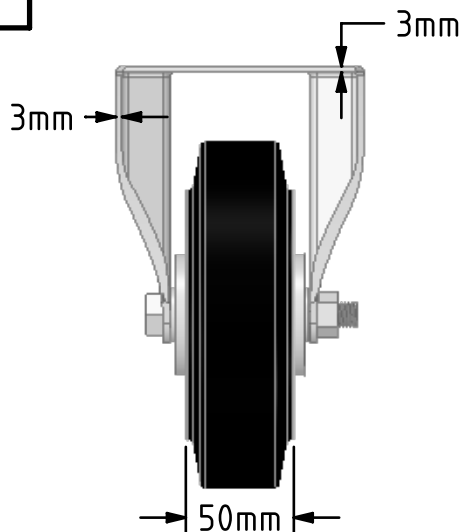
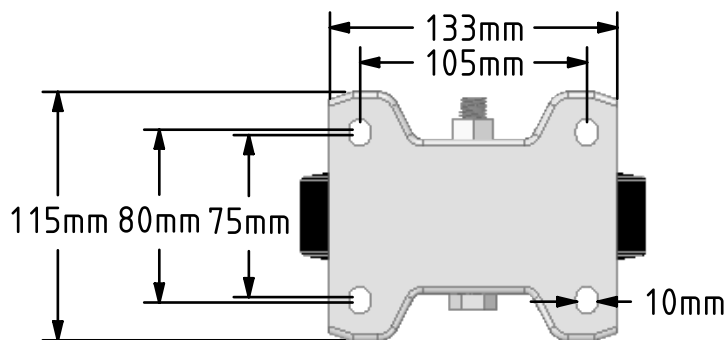


DRAWING DISCLAIMER
 COPYRIGHT OF THIS DRAWING IS RESERVED BY BIL GROUP LTD. IT IS ISSUED ON CONDITION THAT IT IS NOT REPRODUCED, COPIED, OR DISCLOSED TO A THIRD PARTY EITHER WHOLLY OR IN PART WITHOUT THE CONSENT IN WRITING OF BIL GROUP LTD.



Description:
 BZWBF160ERBJ

Pressed steel fixed castor with a top plate fixing fitted with a black high natural 65 shore A elastic rubber tyre aluminium centred wheel with ball bearings. Wheel diameter 160mm, tread width 50mm, overall height 195mm, top plate 133mm x 115mm, hole centres 105mm x 80mm. Load capacity 350kg. REACH compliant also PAH-Free rubber to confirm to EU-directive 2005/69/EC



	NAME	DATE
DRAWN	Matt	17/09/18
APPROVED BY	Chris	17/09/18
SCALE	2:7	17/09/18
WEIGHT	2.071kg	17/09/18

UNLESS OTHERWISE SPECIFIED DIMENSIONS ARE IN MILLIMETRES

Unspecified Tolerances
 Machining ± 0.25mm
 Fabrication ± 1mm



BIL Group Ltd, Porte Marsh Road, Calne
 Wiltshire, SN11 9BW, United Kingdom
 Tel +44 (0)1249 822 222 Fax: +44 (0)1249 822 300
 www.bilgroup.co.uk

TITLE

BZWBF160ERBJ

SIZE DWG NO.

A4

BILCW03BZWBF160ERBJ_01

REV

1

FILE NAME

BILCW03BZWBF160ERBJ_01.PDF

SHEET 1 OF 1