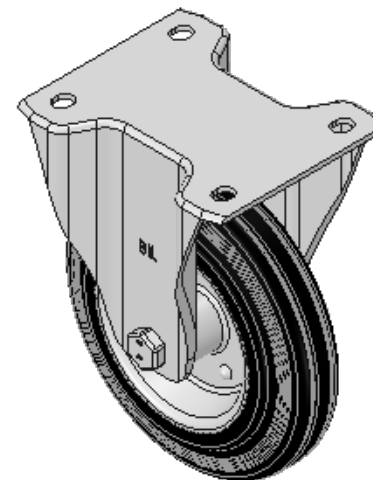
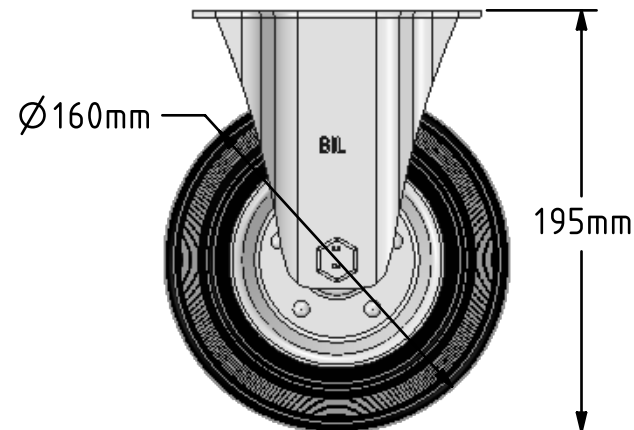
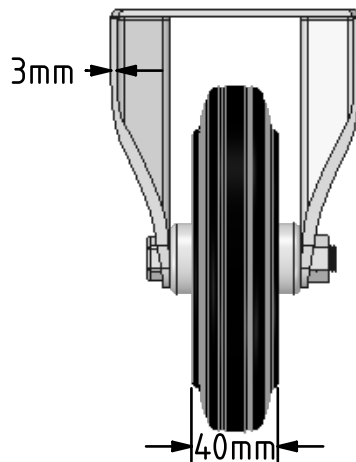
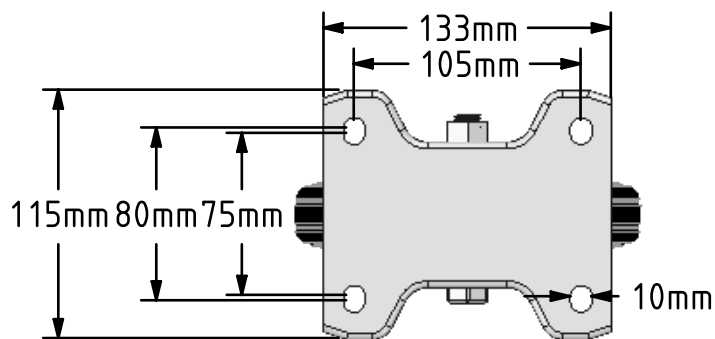


DRAWING DISCLAIMER
 COPYRIGHT OF THIS DRAWING IS RESERVED BY BIL GROUP LTD. IT IS ISSUED ON CONDITION THAT IT IS NOT REPRODUCED, COPIED, OR DISCLOSED TO A THIRD PARTY EITHER WHOLLY OR IN PART WITHOUT THE CONSENT IN WRITING OF BIL GROUP LTD.



Description:
 BZWBF160BSB

Pressed steel fixed castor with a top plate fixing fitted with a Black rubber tyre on steel disc centre with a roller bearing. Wheel diameter 160mm, tread width 40mm, overall height 195mm, plate size 133mm x 115mm, hole centres 105 x 80/75mm. Load capacity 160kg.



	NAME	DATE
DRAWN	Matt	13/03/18
APPROVED BY	Chris	13/03/18
SCALE	2:7	13/03/18
WEIGHT	1.767kg	13/03/18



BIL Group Ltd, Porte Marsh Road, Calne
 Wiltshire, SN11 9BW, United Kingdom
 Tel +44 (0)1249 822 222 Fax: +44 (0)1249 822 300
 www.bilgroup.co.uk

TITLE

BZWBF160BSB

UNLESS OTHERWISE SPECIFIED DIMENSIONS ARE IN MILLIMETRES

Unspecified Tolerances
 Machining ± 0.25mm
 Fabrication ± 1mm

SIZE	DWG NO.	REV
A4	BILCW03BZWBF160BSB_01	1
FILE NAME	BILCW03BZWBF160BSB_01.PDF SHEET 1 OF 1	