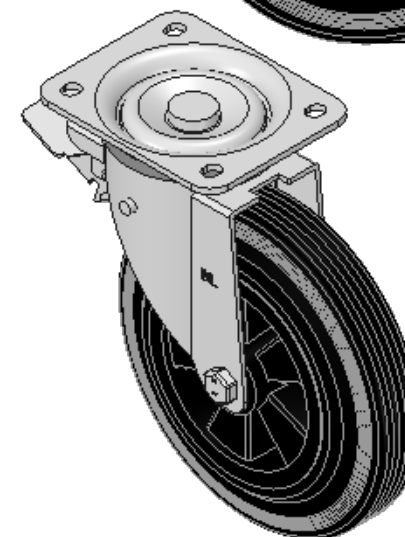
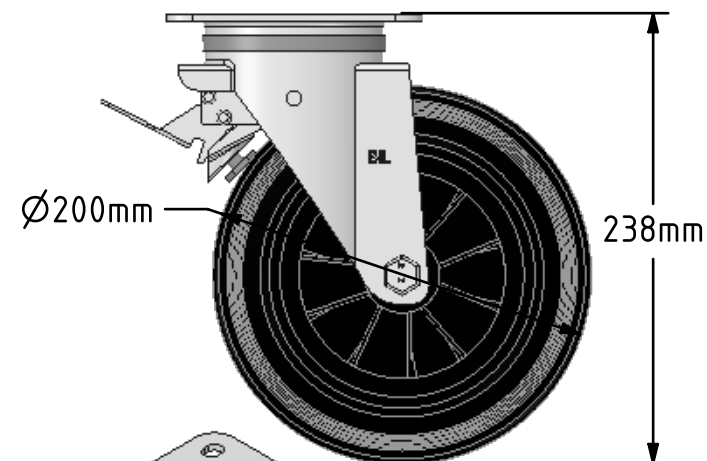
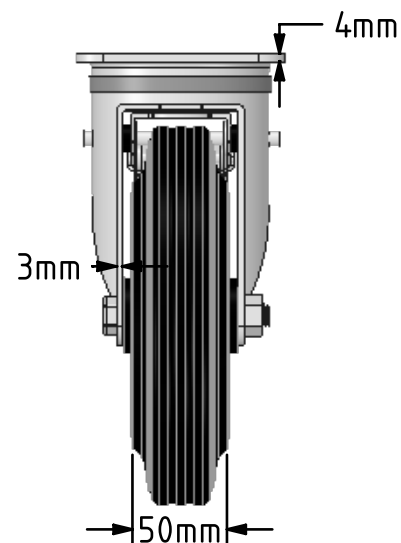
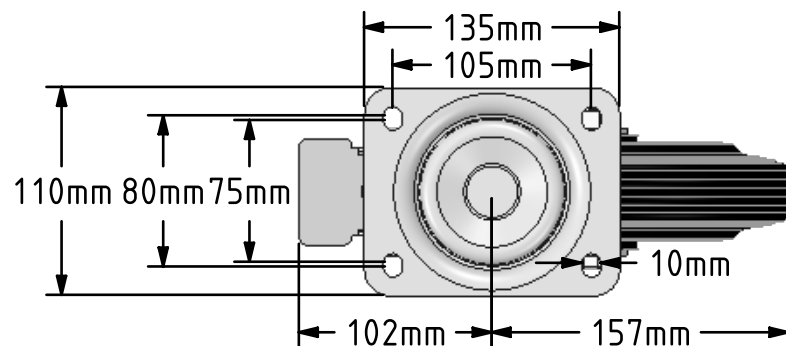


DRAWING DISCLAIMER

COPYRIGHT OF THIS DRAWING IS RESERVED BY BIL GROUP LTD. IT IS ISSUED ON CONDITION THAT IT IS NOT REPRODUCED, COPIED, OR DISCLOSED TO A THIRD PARTY EITHER WHOLLY OR IN PART WITHOUT THE CONSENT IN WRITING OF BIL GROUP LTD.

**Description:****BZWB200PSBSWB**

Pressed steel swivel flat plate castor with a top plate fixing fitted with black rubber tyre on black polypropylene centred wheel with a roller bearing and total lock brake. Wheel diameter 200mm, tread width 50mm, overall height 238mm, plate size 135mm x 110mm, hole centres 105mm x 80/75mm, load capacity 205kg.



	NAME	DATE
DRAWN	Matt	23/01/18
APPROVED BY	Tim W	23/01/18
SCALE	1:4	23/01/18
WEIGHT	3.058kg	23/01/18

UNLESS OTHERWISE SPECIFIED DIMENSIONS ARE IN MILLIMETRES

Unspecified Tolerances
Machining $\pm 0.25\text{mm}$
Fabrication $\pm 1\text{mm}$



BIL Group Ltd, Porte Marsh Road, Calne
Wiltshire, SN11 9BW, United Kingdom
Tel +44 (0)1249 822 222 Fax: +44 (0)1249 822 300
www.bilgroup.co.uk

TITLE

BZWB200PSBSWB

SIZE DWG NO.

A4

BILCW03BZWB200PSBSWB__02

REV

2

FILE NAME BILCW03BZWB200PSBSWB__02.PDF

SHEET 1 OF 1