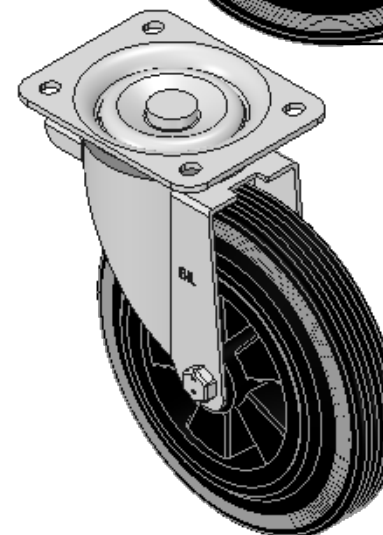
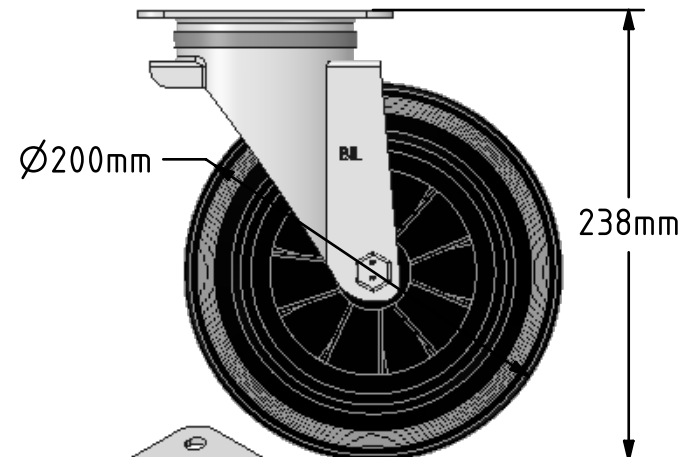
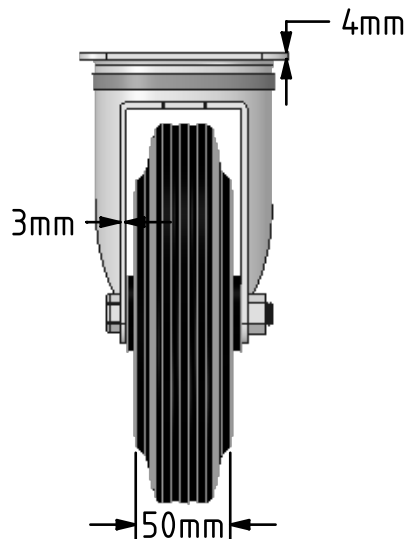
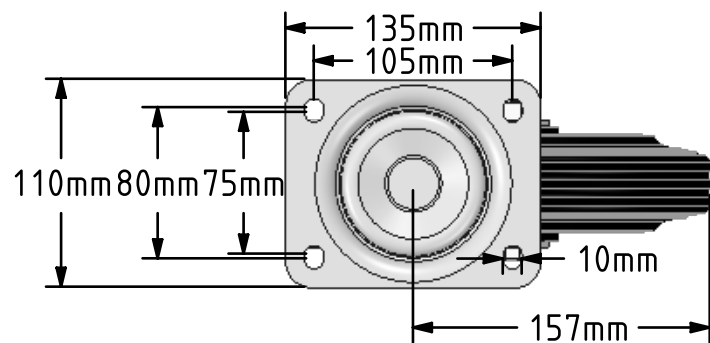


DRAWING DISCLAIMER  
 COPYRIGHT OF THIS DRAWING IS RESERVED BY BIL GROUP LTD. IT IS ISSUED ON CONDITION THAT IT IS NOT REPRODUCED, COPIED, OR DISCLOSED TO A THIRD PARTY EITHER WHOLLY OR IN PART WITHOUT THE CONSENT IN WRITING OF BIL GROUP LTD.



**Description:**  
 BZWB200PSB

Pressed steel swivel flat plate castor with a top plate fixing fitted with black rubber tyre on black polypropylene centre with a roller bearing. Wheel diameter 200mm, tread width 50mm, overall height 238mm, plate size 135mm x 110mm, hole centres 105mm x 80/75mm, Load capacity 205kg.



	NAME	DATE
DRAWN	Matt	23/01/18
APPROVED BY	Chris	23/01/18
SCALE	1:4	23/01/18
WEIGHT	2.769kg	23/01/18

 BIL Group Ltd, Porte Marsh Road, Calne  
 Wiltshire, SN11 9BW, United Kingdom  
 Tel +44 (0)1249 822 222 Fax: +44 (0)1249 822 300  
 www.bilgroup.co.uk

TITLE	BZWB200PSB	
-------	------------	--

UNLESS OTHERWISE SPECIFIED DIMENSIONS ARE IN MILLIMETRES		SIZE	DWG NO.	REV
Unspecified Tolerances Machining ± 0.25mm Fabrication ± 1mm		A4	BILCW03BZWB200PSB_01	1
FILE NAME		BILCW03BZWB200PSB_01.PDF		SHEET 1 OF 1