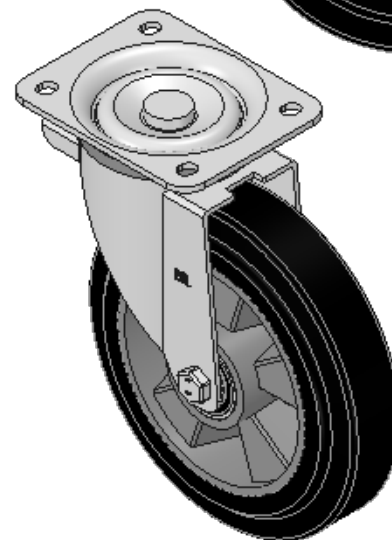
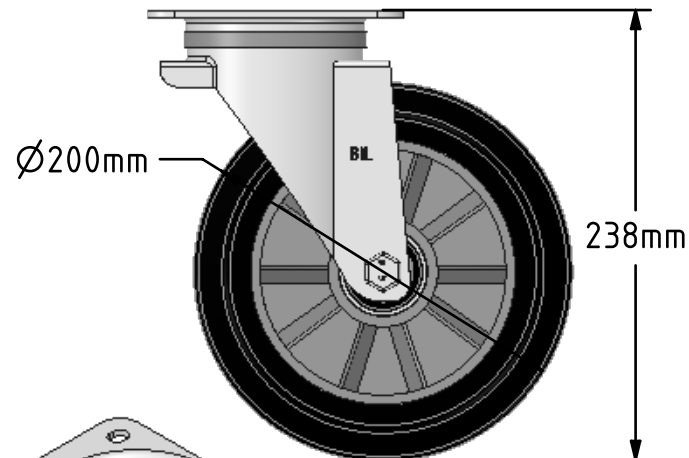
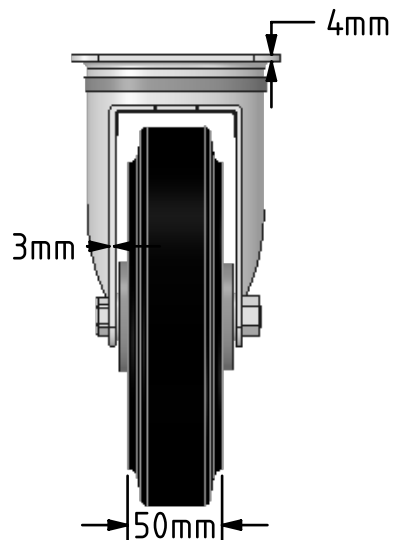
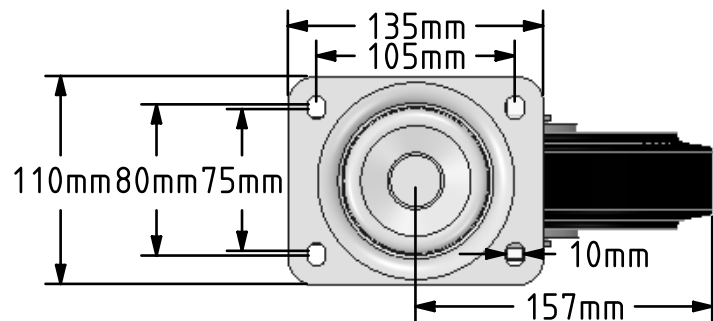


DRAWING DISCLAIMER
 COPYRIGHT OF THIS DRAWING IS RESERVED BY BIL GROUP LTD. IT IS ISSUED ON CONDITION THAT IT IS NOT REPRODUCED, COPIED, OR DISCLOSED TO A THIRD PARTY EITHER WHOLLY OR IN PART WITHOUT THE CONSENT IN WRITING OF BIL GROUP LTD.



Description:
 BZWB200ERBJ

Pressed steel swivel castor with a top plate fixing fitted with a black high elastic natural 65 shore A rubber tyre on aluminium centred wheel with ball bearings. Wheel diameter 200mm, tread width 50mm, overall height 238mm, top plate 135mm x 110mm, hole centres 105mm x 80/75mm. Load capacity 350kg. REACH compliant also PAH-Free rubber to confirm to EU-directive 2005/69/EC



	NAME	DATE
DRAWN	Matt	24/01/18
APPROVED BY	Tim W	24/01/18
SCALE	1:4	24/01/18
WEIGHT	2.921kg	24/01/18

UNLESS OTHERWISE SPECIFIED DIMENSIONS ARE IN MILLIMETRES

Unspecified Tolerances
 Machining ± 0.25mm
 Fabrication ± 1mm



BIL Group Ltd, Porte Marsh Road, Calne
 Wiltshire, SN11 9BW, United Kingdom
 Tel +44 (0)1249 822 222 Fax: +44 (0)1249 822 300
 www.bilgroup.co.uk

TITLE

BZWB200ERBJ

SIZE A4
 DWG NO.

BILCW03BZWB200ERBJ_01

REV 1

FILE NAME BILCW03BZWB200ERBJ_01.PDF

SHEET 1 OF 1