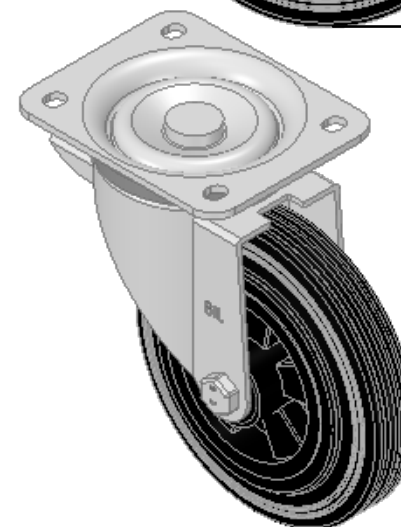
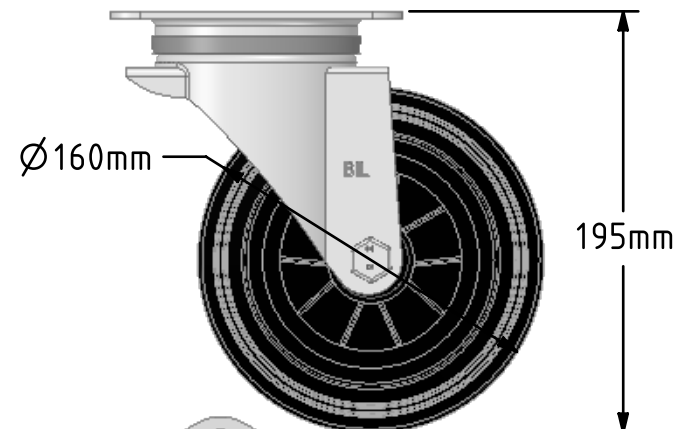
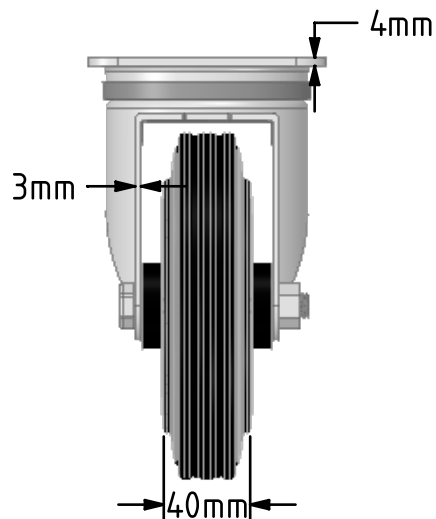
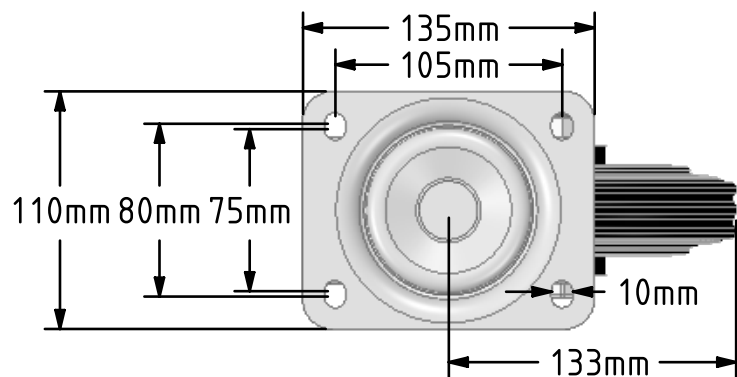


**DRAWING DISCLAIMER**  
 COPYRIGHT OF THIS DRAWING IS RESERVED BY BIL GROUP LTD. IT IS ISSUED ON CONDITION THAT IT IS NOT REPRODUCED, COPIED, OR DISCLOSED TO A THIRD PARTY EITHER WHOLLY OR IN PART WITHOUT THE CONSENT IN WRITING OF BIL GROUP LTD.



**Description:**  
 BZWB160PSB

Pressed steel swivel castor with a top plate fixing fitted with a black rubber tyre on a black polypropylene centred wheel with a roller bearing. Wheel diameter 160mm, tread width 40mm, overall height 195mm, top plate 135mm x 110mm, hole centres 105mm x 80/75mm. Load capacity 140kg.



|             | NAME   | DATE     |
|-------------|--------|----------|
| DRAWN       | Matt   | 13/09/18 |
| APPROVED BY | Tim W  | 13/09/18 |
| SCALE       | 2:7    | 13/09/18 |
| WEIGHT      | 2.15kg | 13/09/18 |

**BIL** BIL Group Ltd, Porte Marsh Road, Calne  
 Wiltshire, SN11 9BW, United Kingdom  
 Tel +44 (0)1249 822 222 Fax: +44 (0)1249 822 300  
 www.bilgroup.co.uk

| TITLE      |                      | REV                      |
|------------|----------------------|--------------------------|
| BZWB160PSB |                      | 1                        |
| SIZE       | DWG NO.              | FILE NAME                |
| A4         | BILCW03BZWB160PSB_01 | BILCW03BZWB160PSB_01.PDF |
|            |                      | SHEET 1 OF 1             |

UNLESS OTHERWISE SPECIFIED DIMENSIONS ARE IN MILLIMETRES

Unspecified Tolerances  
 Machining ± 0.25mm  
 Fabrication ± 1mm