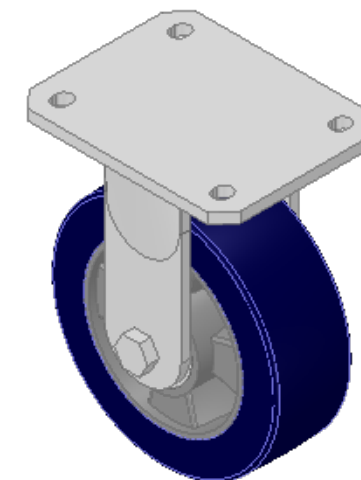
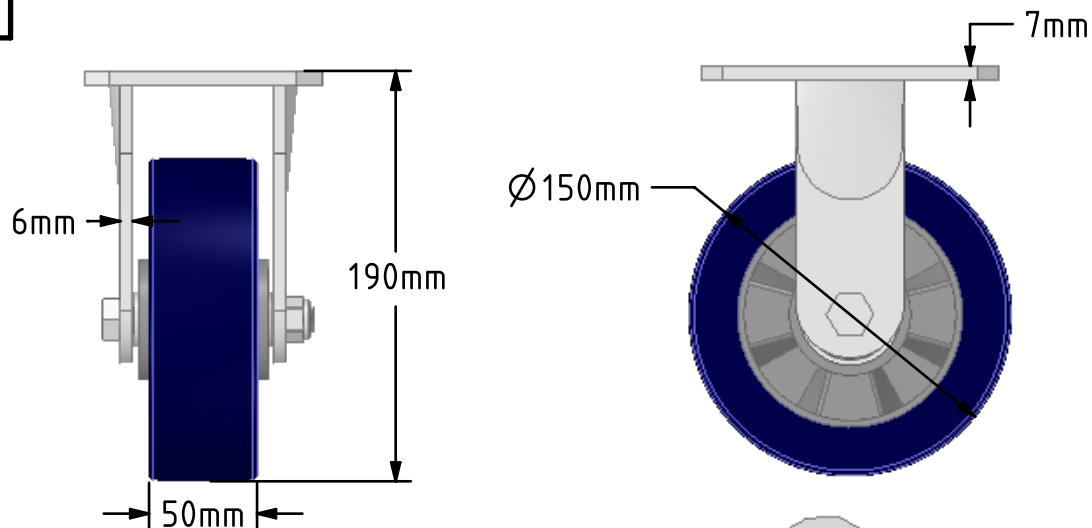
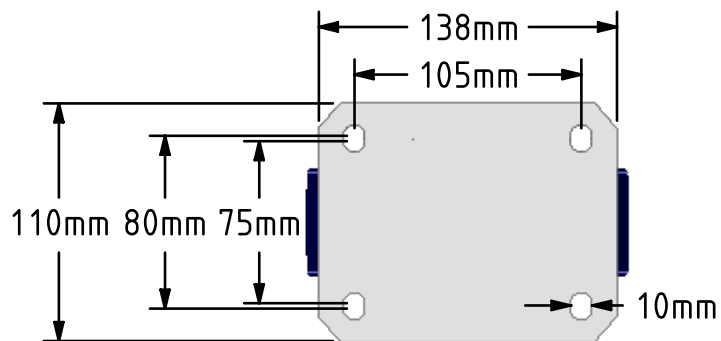


DRAWING DISCLAIMER
 COPYRIGHT OF THIS DRAWING IS RESERVED BY BIL GROUP LTD. IT IS ISSUED ON CONDITION THAT IT IS NOT REPRODUCED, COPIED, OR DISCLOSED TO A THIRD PARTY EITHER WHOLLY OR IN PART WITHOUT THE CONSENT IN WRITING OF BIL GROUP LTD.



Description:
 BZSPHF150SPABJ

Fabricated BZMJF150AS fixed castor with a top plate fixing fitted with a blue 75 shore A polyurethane tyre on aluminium centred wheel with ball bearings. Wheel diameter 150mm, tread width 50mm, overall height 190mm, top plate 135mm x 110mm, hole centres 105mm x 80mm/75mm. Load capacity 500kg at 4kph and 190kg at 16kph



| | NAME | DATE |
|-------------|--------|----------|
| DRAWN | Matt | 24/09/18 |
| APPROVED BY | Chris | 24/09/18 |
| SCALE | 2:7 | 24/09/18 |
| WEIGHT | 2.59kg | 24/09/18 |

 BIL Group Ltd, Porte Marsh Road, Calne
 Wiltshire, SN11 9BW, United Kingdom
 Tel +44 (0)1249 822 222 Fax: +44 (0)1249 822 300
 www.bilgroup.co.uk

| | | |
|------------------------------|--------------------------|--------------|
| TITLE | | |
| BZSPHF150SPABJ | | |
| SIZE | DWG NO. | REV |
| A4 | BILCW03BZSPHF150SPABJ_01 | 1 |
| FILE NAME | | SHEET 1 OF 1 |
| BILCW03BZSPHF150SPABJ_01.PDF | | |

UNLESS OTHERWISE SPECIFIED DIMENSIONS ARE IN MILLIMETRES
 Unspecified Tolerances
 Machining ± 0.25mm
 Fabrication ± 1mm