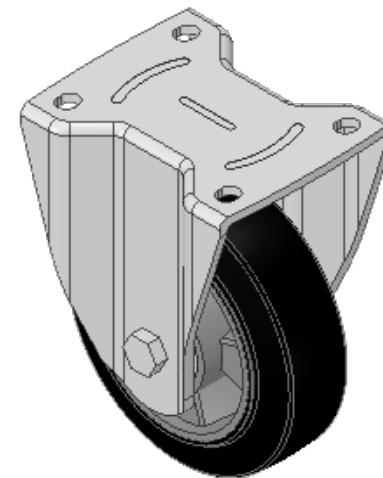
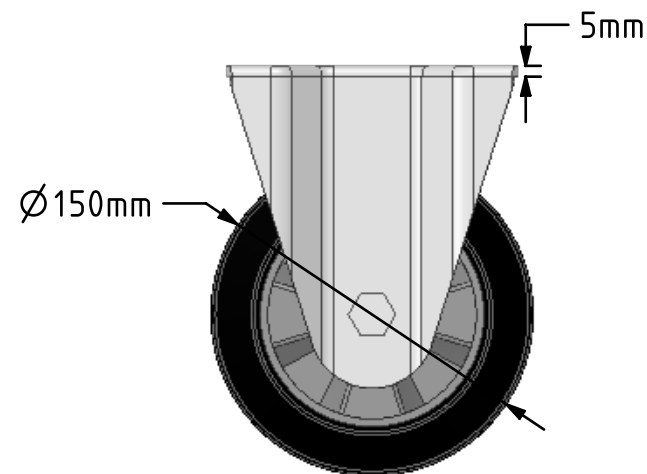
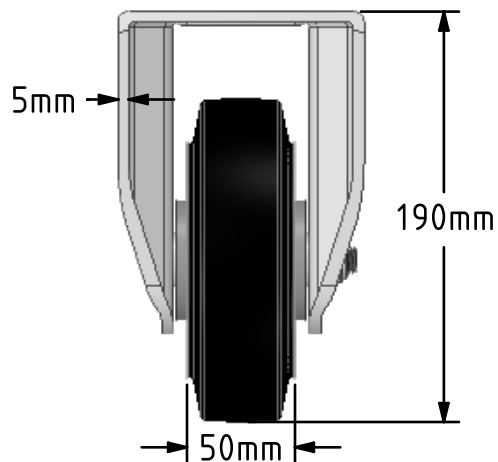
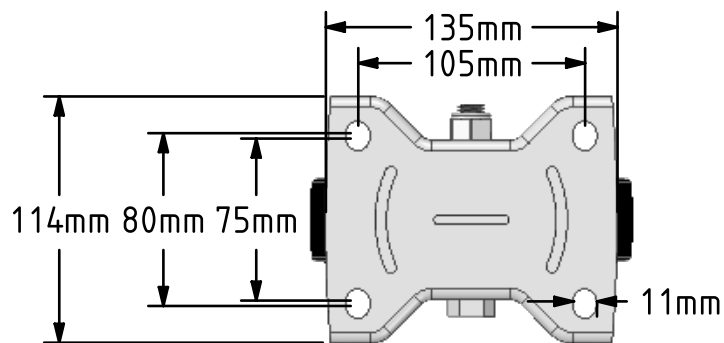



DRAWING DISCLAIMER
 COPYRIGHT OF THIS DRAWING IS RESERVED BY BIL GROUP LTD. IT IS ISSUED ON CONDITION THAT IT IS NOT REPRODUCED, COPIED, OR DISCLOSED TO A THIRD PARTY EITHER WHOLLY OR IN PART WITHOUT THE CONSENT IN WRITING OF BIL GROUP LTD.



Description:
 BZSPHF150ERBJ

Pressed steel fixed bracket with a top plate fixing fitted with a black high elastic natural 65 shore A rubber tyre wheel aluminium centre with ball bearings. Wheel diameter 150mm, tread width 50mm, overall height 190mm, top plate 135mm x 114mm, hole centres 105mm x 80/75mm. Load capacity 350kg at 4kph and 140kg at 10kph. REACH compliant also PAH-Free rubber to confirm to EU-directive 2005/69/EC



	NAME	DATE	BIL Group Ltd, Porte Marsh Road, Calne Wiltshire, SN11 9BW, United Kingdom Tel +44 (0)1249 822 222 Fax: +44 (0)1249 822 300 www.bilgroup.co.uk	
DRAWN	Matt	07/06/19		TITLE BZSPHF150ERBJ
APPROVED BY	Chris	07/06/19		
SCALE	2:7	07/06/19		
WEIGHT	2.636kg	07/06/19		
UNLESS OTHERWISE SPECIFIED DIMENSIONS ARE IN MILLIMETRES			SIZE	DWG NO.
Unspecified Tolerances Machining ± 0.25mm Fabrication ± 1mm			A4	BILCW03BZSPHF150ERBJ_02
			REV	2
			FILE NAME	BILCW03BZSPHF150ERBJ_02.PDF SHEET 1 OF 1