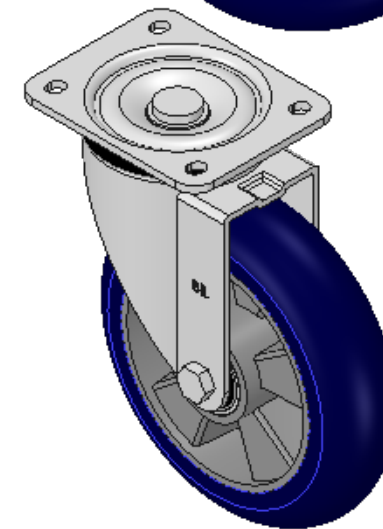
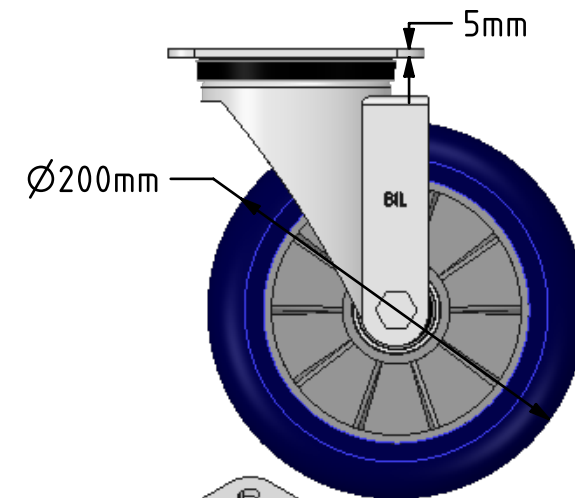
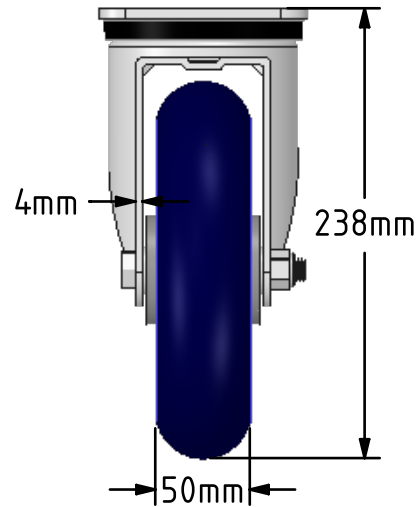
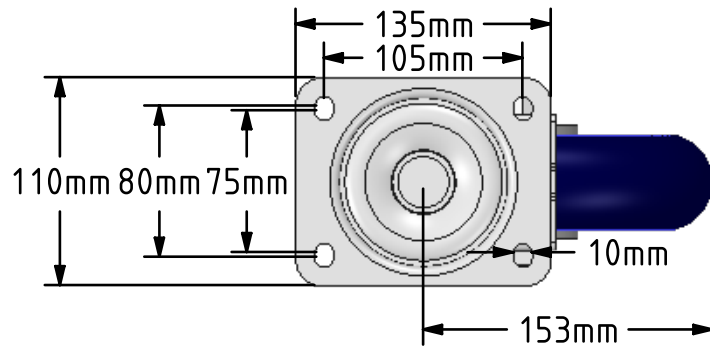


**DRAWING DISCLAIMER**

COPYRIGHT OF THIS DRAWING IS RESERVED BY BIL GROUP LTD. IT IS ISSUED ON CONDITION THAT IT IS NOT REPRODUCED, COPIED, OR DISCLOSED TO A THIRD PARTY EITHER WHOLLY OR IN PART WITHOUT THE CONSENT IN WRITING OF BIL GROUP LTD.

**Description:**

BZSPH200RSPABJ

Pressed steel swivel castor with a top plate fixing fitted with a ergonomic blue 75 shore A polyurethane tyre on aluminium centred wheel with ball bearings. Wheel diameter 200mm, tread width 50mm, overall height 238mm, top plate 135mm x 110mm, hole centres 105mm x 80mm/75mm. Load capacity 600kg at 4kph and 240kg at 16kph



	NAME	DATE
DRAWN	Matt	21/05/18
APPROVED BY	Chris	21/05/18
SCALE	1:4	21/05/18
WEIGHT	3.365kg	21/05/18

UNLESS OTHERWISE SPECIFIED DIMENSIONS ARE IN MILLIMETRES

Unspecified Tolerances  
Machining  $\pm 0.25\text{mm}$   
Fabrication  $\pm 1\text{mm}$



BIL Group Ltd, Porte Marsh Road, Calne  
Wiltshire, SN11 9BW, United Kingdom  
Tel +44 (0)1249 822 222 Fax: +44 (0)1249 822 300  
www.bilgroup.co.uk

TITLE

BZSPH200RSPABJ

SIZE DWG NO.

A4

BILCW03BZSPH200RSPABJ\_01

REV

1

FILE NAME BILCW03BZSPH200RSPABJ\_01.PDF

SHEET 1 OF 1