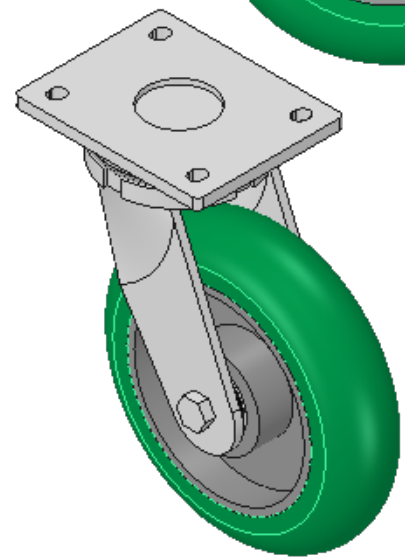
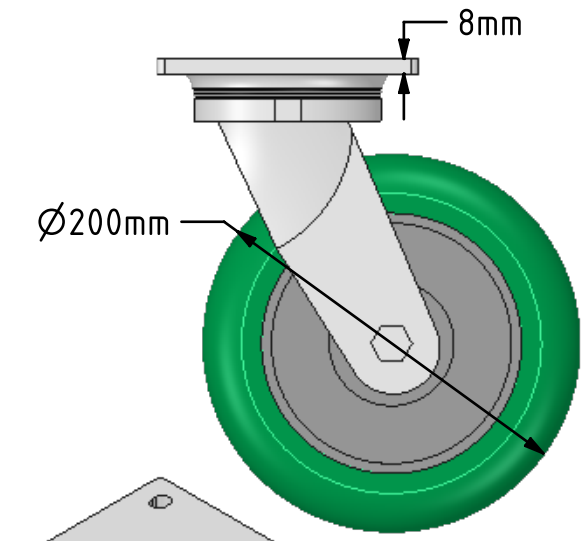
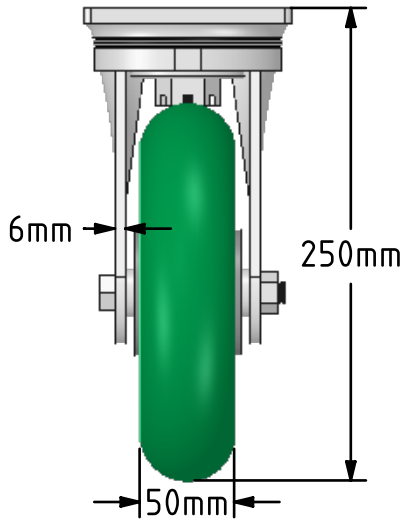
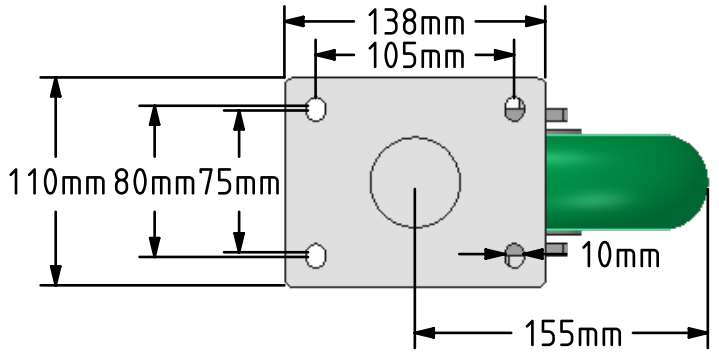


DRAWING DISCLAIMER
 COPYRIGHT OF THIS DRAWING IS RESERVED BY BIL GROUP LTD. IT IS ISSUED ON CONDITION THAT IT IS NOT REPRODUCED, COPIED, OR DISCLOSED TO A THIRD PARTY EITHER WHOLLY OR IN PART WITHOUT THE CONSENT IN WRITING OF BIL GROUP LTD.



Description:
 BZSAB200SRPTABJ
 Fabricated zinc plated swivel castor with plate fixing fitted with a green 85 shore A polyurethane tyre aluminium centred wheel centred wheel with ball bearings. Wheel diameter 200mm, tread width 50mm, overall height 250mm, plate size 138mm x 110mm, hole centres 105mm x 80mm/75mm. Load capacity 775kg



	NAME	DATE
DRAWN	Matt	29/05/18
APPROVED BY	Tim W	29/05/18
SCALE	1:4	29/05/18
WEIGHT	5.177kg	29/05/18

BIL BIL Group Ltd, Porte Marsh Road, Calne
 Wiltshire, SN11 9BW, United Kingdom
 Tel +44 (0)1249 822 222 Fax: +44 (0)1249 822 300
 www.bilgroup.co.uk

TITLE		
BZSAB200SRPTABJ		
SIZE	DWG NO.	REV
A4	BILCW03BZSAB200SRPTABJ_01	1
FILE NAME BILCW03BZSAB200SRPTABJ_01.PDF SHEET 1 OF 1		

UNLESS OTHERWISE SPECIFIED DIMENSIONS ARE IN MILLIMETRES
 Unspecified Tolerances
 Machining ± 0.25mm
 Fabrication ± 1mm