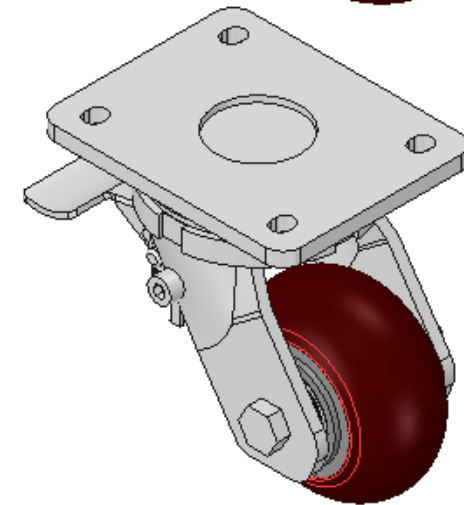
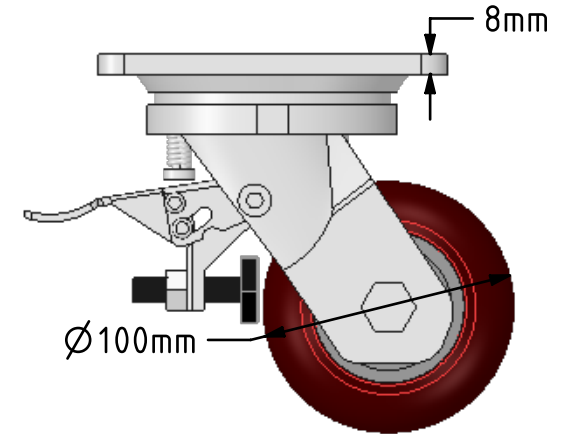
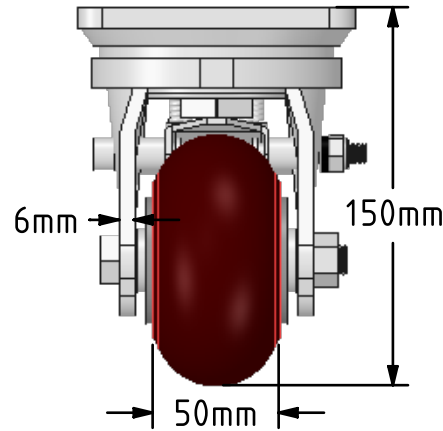
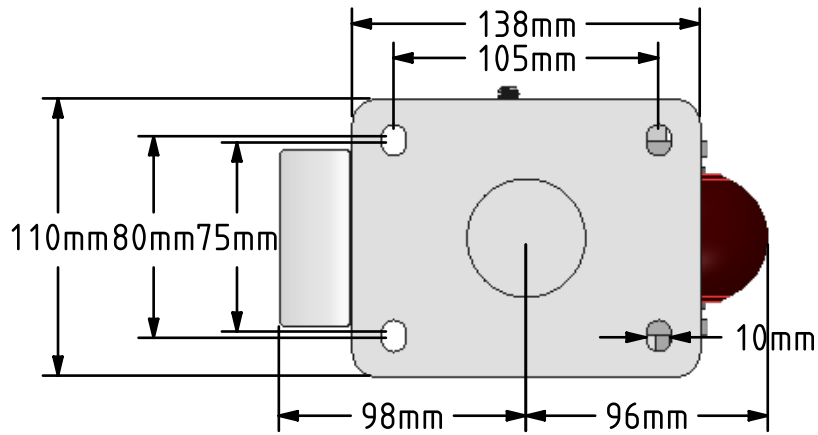


DRAWING DISCLAIMER
 COPYRIGHT OF THIS DRAWING IS RESERVED BY BIL GROUP LTD. IT IS ISSUED ON CONDITION THAT IT IS NOT REPRODUCED, COPIED, OR DISCLOSED TO A THIRD PARTY EITHER WHOLLY OR IN PART WITHOUT THE CONSENT IN WRITING OF BIL GROUP LTD.



Description:
 BZSAB100RPTABJSWB

Fabricated zinc plated swivel castor with a top plate fixing fitted with a brown ergonomic polyurethane wheel on an aluminium centre with ball bearings and total lock brake. Wheel diameter 100mm, tread width 50mm, overall height 150mm, top plate 138mm x 110mm, hole centres 105mm x 80/75mm. Load capacity 350kg.



	NAME	DATE
DRAWN	Matt	23/05/18
APPROVED BY	Tim W	23/05/18
SCALE	1:3	23/05/18
WEIGHT	3.677kg	23/05/18

UNLESS OTHERWISE SPECIFIED DIMENSIONS ARE IN MILLIMETRES
 Unspecified Tolerances
 Machining ± 0.25mm
 Fabrication ± 1mm

BIL BIL Group Ltd, Porte Marsh Road, Calne Wiltshire, SN11 9BW, United Kingdom
 Tel +44 (0)1249 822 222 Fax: +44 (0)1249 822 300
 www.bilgroup.co.uk

TITLE
BZSAB100RPTABJSWB

SIZE	DWG NO.	REV
A4	BILCW03BZSAB100RPTABJSWB_01	1

FILE NAME BILCW03BZSAB100RPTABJSWB_01.PDF SHEET 1 OF 1