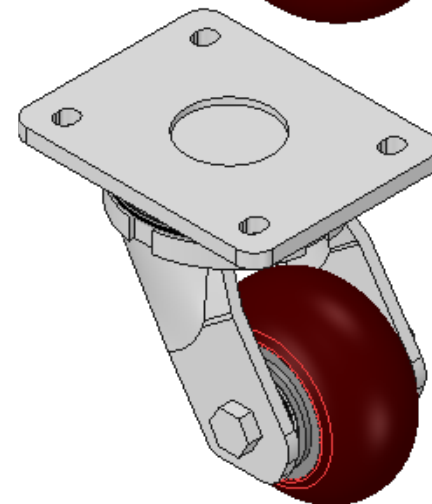
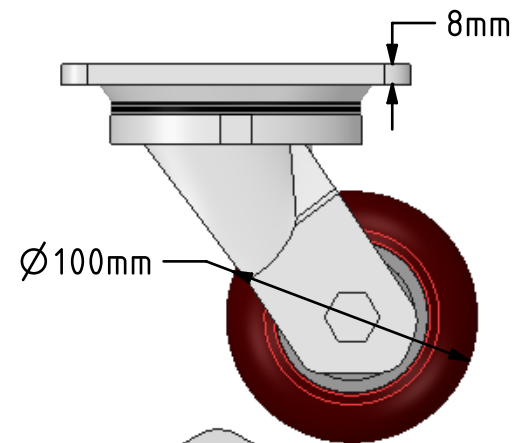
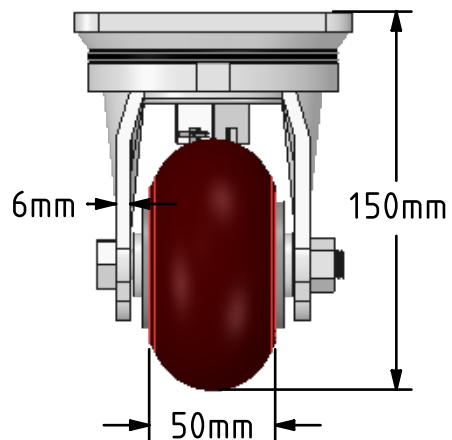
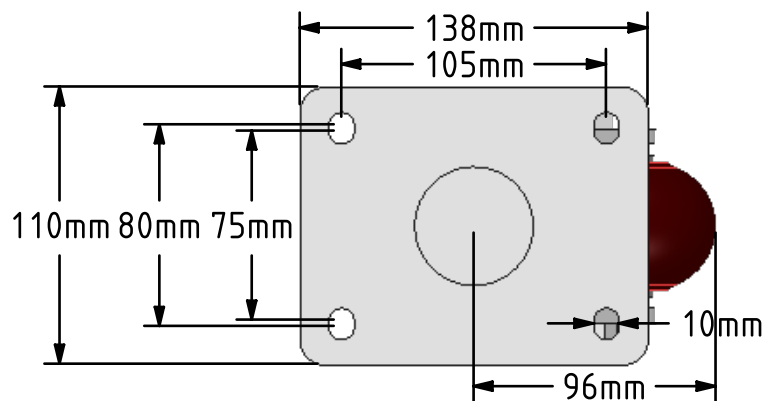


DRAWING DISCLAIMER  
 COPYRIGHT OF THIS DRAWING IS RESERVED BY BIL GROUP LTD. IT IS ISSUED ON CONDITION THAT IT IS NOT REPRODUCED, COPIED, OR DISCLOSED TO A THIRD PARTY EITHER WHOLLY OR IN PART WITHOUT THE CONSENT IN WRITING OF BIL GROUP LTD.



Description:  
 BZSAB100RPTABJ

Fabricated zinc plated swivel castor with a top plate fixing fitted with a brown ergonomic polyurethane wheel on an aluminium centre with ball bearings. Wheel diameter 100mm, tread width 50mm, overall height 150mm, top plate 138mm x 110mm, hole centres 105mm x 80/75mm. Load capacity 350kg.



|             | NAME    | DATE     |
|-------------|---------|----------|
| DRAWN       | Matt    | 23/05/18 |
| APPROVED BY | Tim W   | 23/05/18 |
| SCALE       | 1:3     | 23/05/18 |
| WEIGHT      | 3.448kg | 23/05/18 |

**BIL** Group Ltd, Porte Marsh Road, Calne  
 Wiltshire, SN11 9BW, United Kingdom  
 Tel +44 (0)1249 822 222 Fax: +44 (0)1249 822 300  
 www.bilgroup.co.uk

TITLE  
**BZSAB100RPTABJ**

UNLESS OTHERWISE SPECIFIED DIMENSIONS ARE IN MILLIMETRES  
 Unspecified Tolerances  
 Machining ± 0.25mm  
 Fabrication ± 1mm

| SIZE      | DWG NO.                                   | REV |
|-----------|---|-----|
| A4        | BILCW03BZSAB100RPTABJ_01                  | 1   |
| FILE NAME | BILCW03BZSAB100RPTABJ_01.PDF SHEET 1 OF 1 |     |