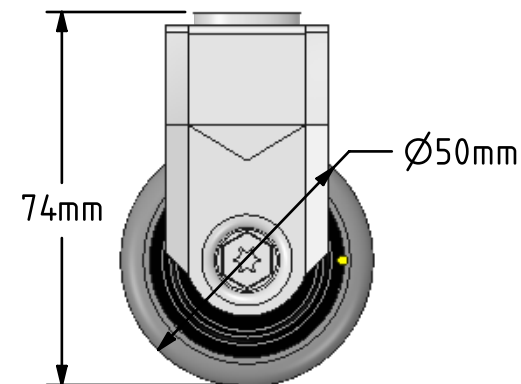
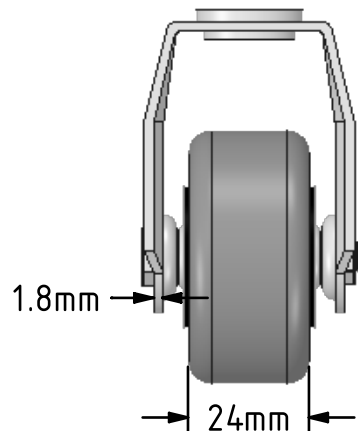
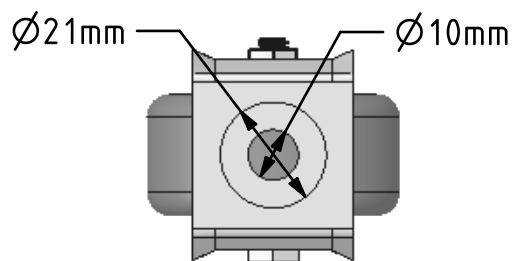
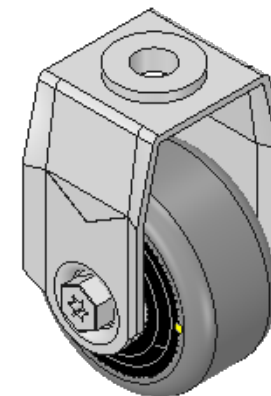



DRAWING DISCLAIMER
 COPYRIGHT OF THIS DRAWING IS RESERVED BY BIL GROUP LTD. IT IS ISSUED ON CONDITION THAT IT IS NOT REPRODUCED, COPIED, OR DISCLOSED TO A THIRD PARTY EITHER WHOLLY OR IN PART WITHOUT THE CONSENT IN WRITING OF BIL GROUP LTD.



Description:
 BZRAF50GRECBJBH10

Pressed steel fixed castor with a 10mm bolt hole fitted with a grey electrically conductive rubber tyre on polypropylene centred wheel with ball bearing. Wheel diameter 50mm, tread width 24mm, overall height 74mm with a Load capacity 50kg. Conductive offers a resistance $R < 10K\Omega$



| | | | | |
|---|---------|----------|---|------------------------------|
| | NAME | DATE |  BIL Group Ltd, Porte Marsh Road, Calne Wiltshire, SN11 9BW, United Kingdom Tel +44 (0)1249 822 222 Fax: +44 (0)1249 822 300 www.bilgroup.co.uk | |
| DRAWN | Matt | 12/12/17 | TITLE | |
| APPROVED BY | Tim W | 12/12/17 | BZRAF50GRECBJBH10 | |
| SCALE | 2:3 | 12/12/17 | SIZE | DWG NO. |
| WEIGHT | 0.147kg | 12/12/17 | A4 | BILCW03BZRAF50GRECBJBH10__01 |
| UNLESS OTHERWISE SPECIFIED DIMENSIONS ARE IN MILLIMETRES | | | REV | 1 |
| Unspecified Tolerances Machining $\pm 0.25\text{mm}$ Fabrication $\pm 1\text{mm}$ | | | FILE NAME BILCW03BZRAF50GRECBJBH10__01.PDF SHEET 1 OF 1 | |