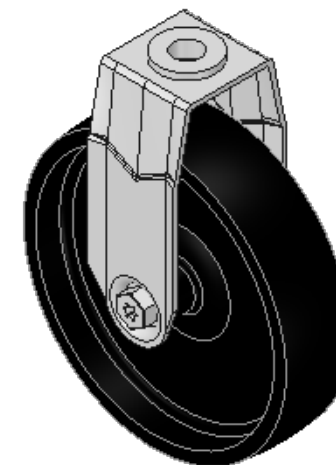
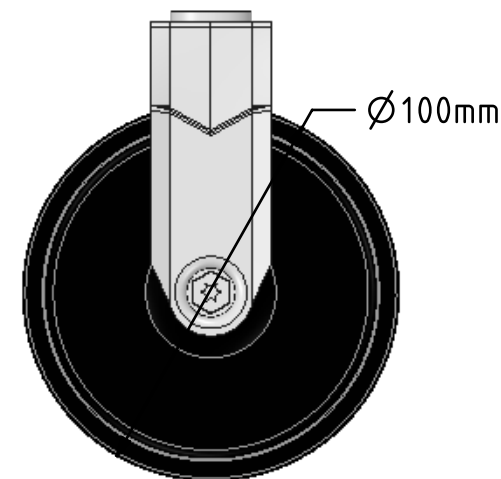
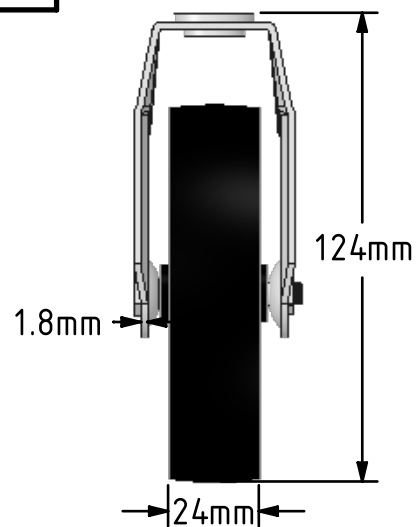
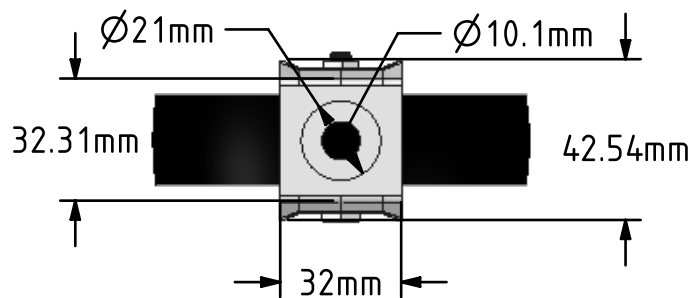


DRAWING DISCLAIMER
 COPYRIGHT OF THIS DRAWING IS RESERVED BY BIL GROUP LTD. IT IS ISSUED ON CONDITION THAT IT IS NOT REPRODUCED, COPIED, OR DISCLOSED TO A THIRD PARTY EITHER WHOLLY OR IN PART WITHOUT THE CONSENT IN WRITING OF BIL GROUP LTD.



Description:
 BZRAF100PLBH10

Pressed steel fixed castor with 10mm bolt hole fixing fitted with a black polypropylene wheel with a plain bearing. Wheel diameter 100mm, tread width 24mm, overall height 124mm. Load capacity 70kg.



	NAME	DATE
DRAWN	Matt	06/12/17
APPROVED BY	Tim W	06/12/17
SCALE	1:2	06/12/17
WEIGHT	0.165kg	06/12/17

UNLESS OTHERWISE SPECIFIED DIMENSIONS ARE IN MILLIMETRES

Unspecified Tolerances
 Machining $\pm 0.25\text{mm}$
 Fabrication $\pm 1\text{mm}$



BIL Group Ltd, Porte Marsh Road, Calne
 Wiltshire, SN11 9BW, United Kingdom
 Tel +44 (0)1249 822 222 Fax: +44 (0)1249 822 300
 www.bilgroup.co.uk

TITLE

BZRAF100PLBH10

SIZE DWG NO.

A4

BILCW03BZRAF100PLBH10__01

REV

1

FILE NAME BILCW03BZRAF100PLBH10__01.PDF

SHEET 1 OF 1