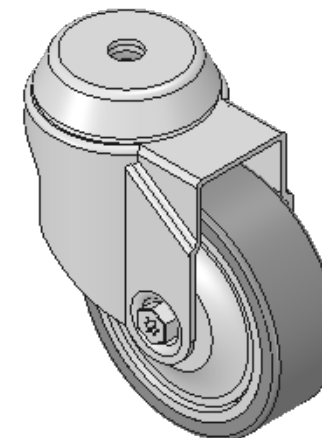
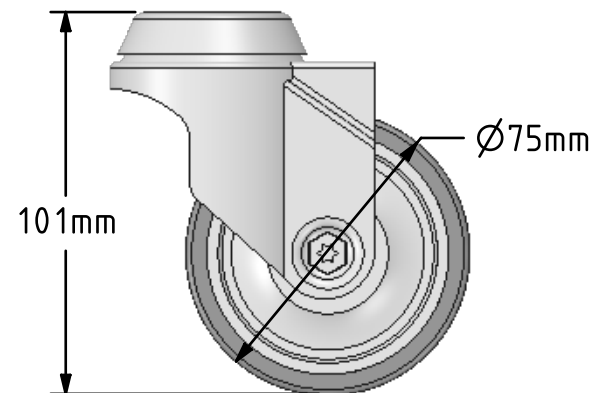
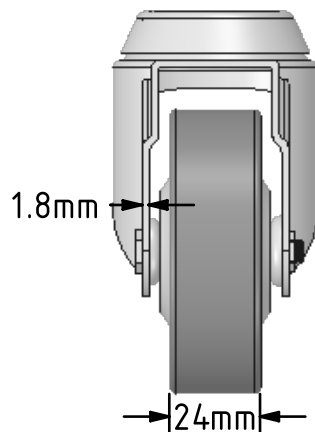
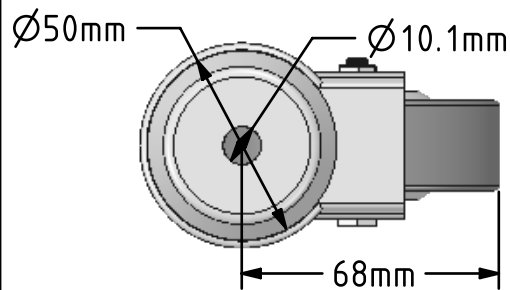



DRAWING DISCLAIMER
 COPYRIGHT OF THIS DRAWING IS RESERVED BY BIL GROUP LTD. IT IS ISSUED ON CONDITION THAT IT IS NOT REPRODUCED, COPIED, OR DISCLOSED TO A THIRD PARTY EITHER WHOLLY OR IN PART WITHOUT THE CONSENT IN WRITING OF BIL GROUP LTD.



Description:
 BZRA75VGRBJBH10

Pressed steel swivel castor with a 10mm bolt hole fitted with a grey thermoplastic rubber tyre on polypropylene centred wheel with ball bearings. Wheel diameter 75mm, tread width 24mm, overall height 101mm with a Load capacity 50kg.



	NAME	DATE	BIL Group Ltd, Porte Marsh Road, Calne Wiltshire, SN11 9BW, United Kingdom Tel +44 (0)1249 822 222 Fax: +44 (0)1249 822 300 www.bilgroup.co.uk	
DRAWN	Matt	11/12/17		
APPROVED BY	Chris	11/12/17		
SCALE	1:2	11/12/17		
WEIGHT	0.276kg	11/12/17		
UNLESS OTHERWISE SPECIFIED DIMENSIONS ARE IN MILLIMETRES			TITLE	
Unspecified Tolerances Machining ± 0.25mm Fabrication ± 1mm			BZRA75VGRBJBH10	
SIZE A4		DWG NO. BILCW03BZRA75VGRBJBH10_01	REV	1
FILE NAME BILCW03BZRA75VGRBJBH10_01.PDF			SHEET 1 OF 1	