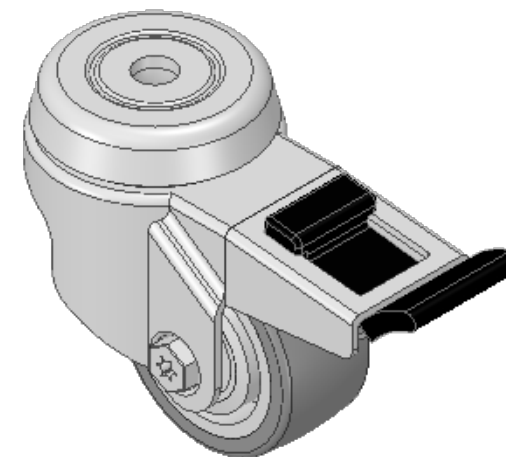
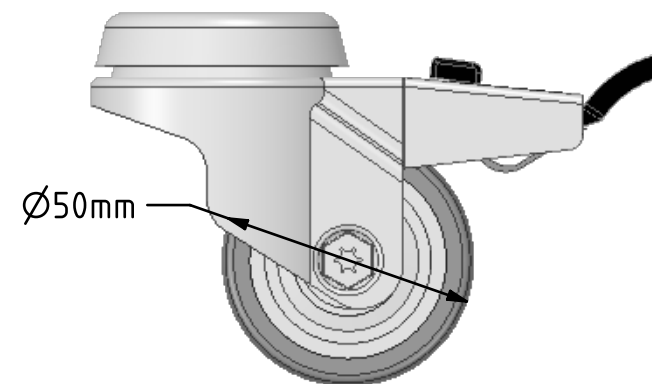
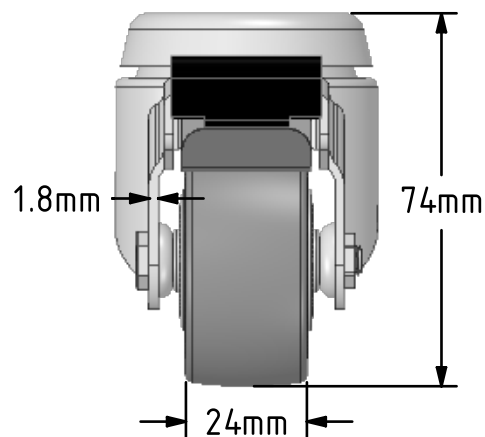
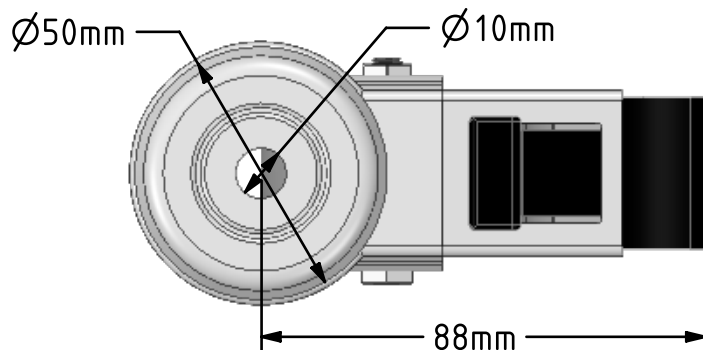


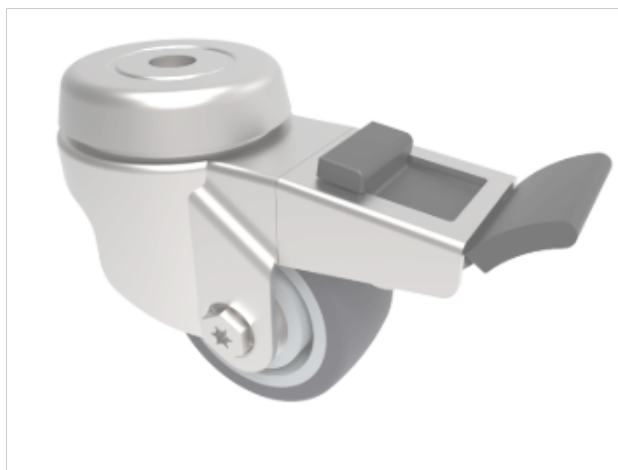
DRAWING DISCLAIMER


COPYRIGHT OF THIS DRAWING IS RESERVED BY BIL GROUP LTD. IT IS ISSUED ON CONDITION THAT IT IS NOT REPRODUCED, COPIED, OR DISCLOSED TO A THIRD PARTY EITHER WHOLLY OR IN PART WITHOUT THE CONSENT IN WRITING OF BIL GROUP LTD.

**Description:**

BZRA50VGRBJBH10SWB

Pressed steel swivel castor with a 10mm bolt hole fitted with a grey thermoplastic rubber tyre on polypropylene centred wheel with ball bearings and a total lock brake. Wheel diameter 50mm, tread width 24mm, overall height 74mm with a Load capacity 50kg.



	NAME	DATE	 <div>BIL Group Ltd, Porte Marsh Road, Calne Wiltshire, SN11 9BW, United Kingdom Tel +44 (0)1249 822 222 Fax: +44 (0)1249 822 300 www.bilgroup.co.uk</div>	
DRAWN	Matt	08/03/19		
APPROVED BY	Chris	08/03/19		
SCALE	2:3	08/03/19		
WEIGHT	0.277kg	08/03/19		
UNLESS OTHERWISE SPECIFIED DIMENSIONS ARE IN MILLIMETRES Unspecified Tolerances Machining ± 0.25mm Fabrication ± 1mm			TITLE	
			BZRA50VGRBJBH10SWB	
			SIZE	DWG NO.
			A4	BILCW03BZRA50VGRBJBH10SWB_01
			REV	1
FILE NAME BILCW03BZRA50VGRBJBH10SWB_01.PDF SHEET 1 OF 1				