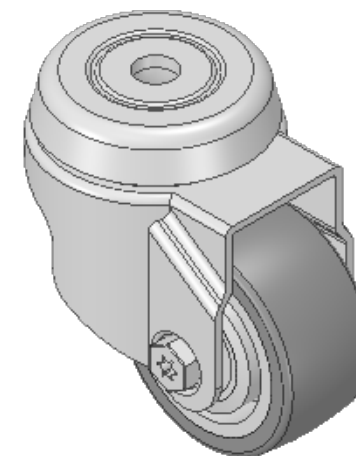
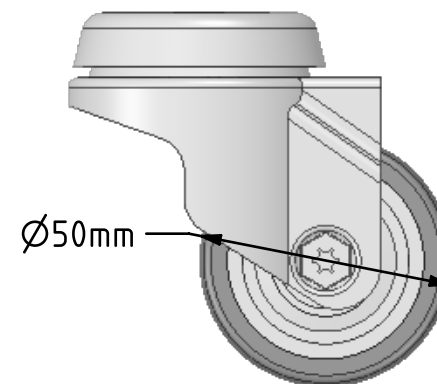
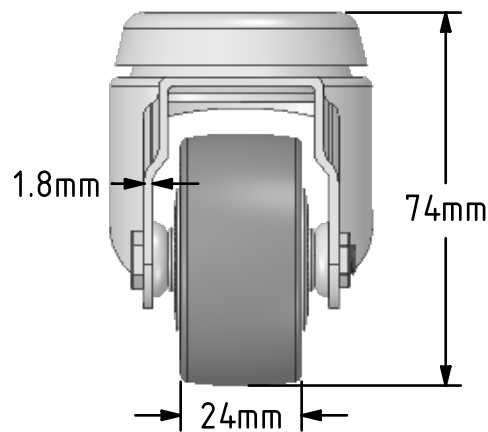
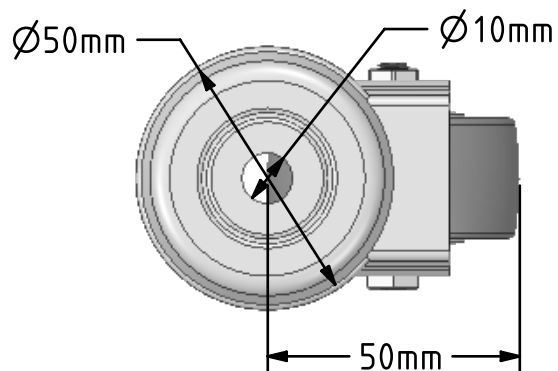



DRAWING DISCLAIMER
 COPYRIGHT OF THIS DRAWING IS RESERVED BY BIL GROUP LTD. IT IS ISSUED ON CONDITION THAT IT IS NOT REPRODUCED, COPIED, OR DISCLOSED TO A THIRD PARTY EITHER WHOLLY OR IN PART WITHOUT THE CONSENT IN WRITING OF BIL GROUP LTD.



Description:
 BZRA50VGRBJBH10

Pressed steel swivel castor with a 10mm bolt hole fitted with a grey thermoplastic rubber tyre on polypropylene centred wheel with ball bearings. Wheel diameter 50mm, tread width 24mm, overall height 74mm with a Load capacity 50kg.



	NAME	DATE	 BIL Group Ltd, Porte Marsh Road, Calne Wiltshire, SN11 9BW, United Kingdom Tel +44 (0)1249 822 222 Fax: +44 (0)1249 822 300 www.bilgroup.co.uk
DRAWN	Matt	07/03/19	
APPROVED BY	Chris	07/03/19	
SCALE	2:3	07/03/19	
WEIGHT	0.235kg	07/03/19	
UNLESS OTHERWISE SPECIFIED DIMENSIONS ARE IN MILLIMETRES Unspecified Tolerances Machining ± 0.25mm Fabrication ± 1mm			TITLE BZRA50VGRBJBH10
SIZE	DWG NO.		REV
A4	BILCW03BZRA50VGRBJBH10__01		1
FILE NAME			SHEET 1 OF 1
BILCW03BZRA50VGRBJBH10__01.PDF			