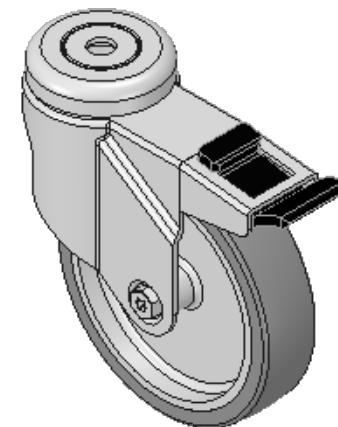
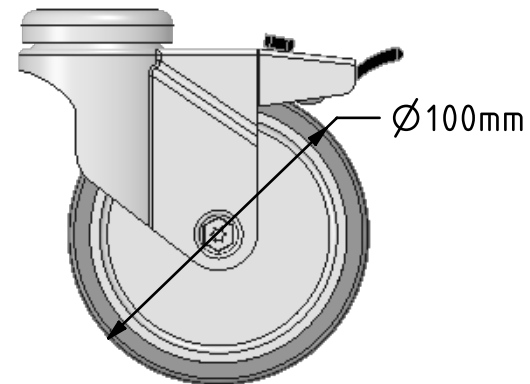
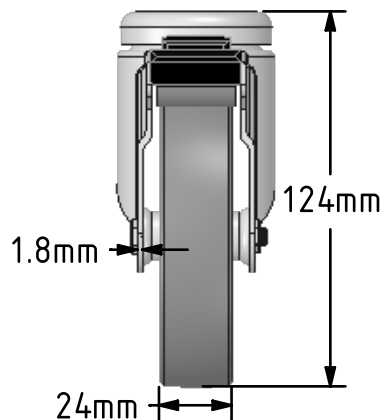
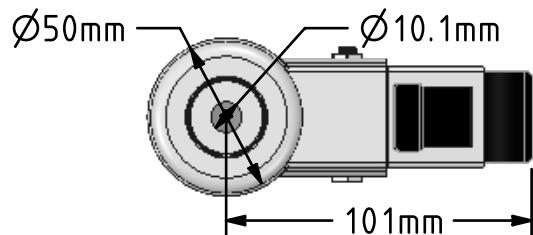


DRAWING DISCLAIMER
 COPYRIGHT OF THIS DRAWING IS RESERVED BY BIL GROUP LTD. IT IS ISSUED ON CONDITION THAT IT IS NOT REPRODUCED, COPIED, OR DISCLOSED TO A THIRD PARTY EITHER WHOLLY OR IN PART WITHOUT THE CONSENT IN WRITING OF BIL GROUP LTD.



Description:
 BZRA100VGRBH10SWB

Pressed steel swivel castor with a 10mm bolt hole fitted with a grey thermoplastic rubber tyre on polypropylene centred wheel with a plain bearing and a total lock brake. Wheel diameter 100mm, tread width 24mm, overall height 124mm with a Load capacity 75kg.



	NAME	DATE
DRAWN	Matt	11/12/17
APPROVED BY	Chris	11/12/17
SCALE	2:5	11/12/17
WEIGHT	0.367kg	11/12/17

UNLESS OTHERWISE SPECIFIED DIMENSIONS ARE IN MILLIMETRES

Unspecified Tolerances
 Machining ± 0.25mm
 Fabrication ± 1mm



BIL Group Ltd, Porte Marsh Road, Calne
 Wiltshire, SN11 9BW, United Kingdom
 Tel +44 (0)1249 822 222 Fax: +44 (0)1249 822 300
 www.bilgroup.co.uk

TITLE

BZRA100VGRBH10SWB

SIZE	DWG NO.	REV
A4	BILCW03BZRA100VGRBH10SWB_01	1

FILE NAME BILCW03BZRA100VGRBH10SWB_01.PDF SHEET 1 OF 1