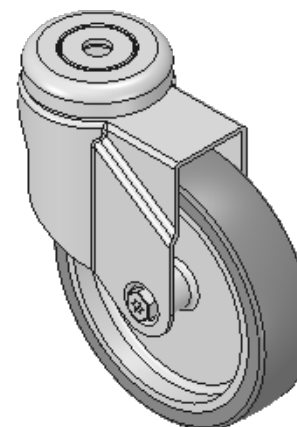
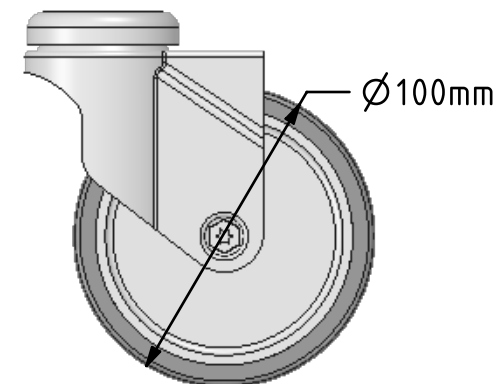
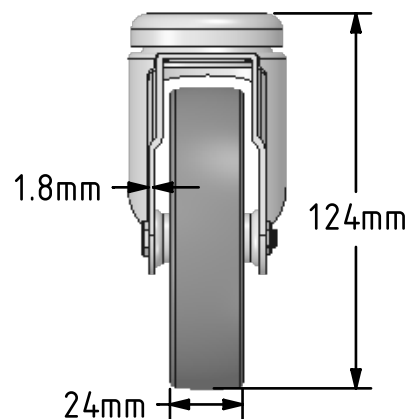
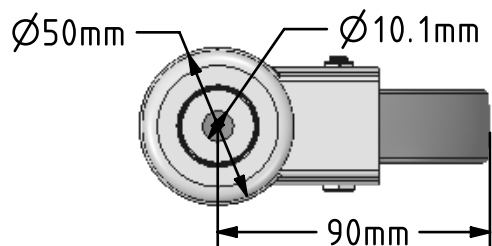



DRAWING DISCLAIMER
 COPYRIGHT OF THIS DRAWING IS RESERVED BY BIL GROUP LTD. IT IS ISSUED ON CONDITION THAT IT IS NOT REPRODUCED, COPIED, OR DISCLOSED TO A THIRD PARTY EITHER WHOLLY OR IN PART WITHOUT THE CONSENT IN WRITING OF BIL GROUP LTD.



Description:
 BZRA100VGRBH10

Pressed steel swivel castor with a 10mm bolt hole fitted with a grey thermoplastic rubber tyre on polypropylene centred wheel with a plain bearing. Wheel diameter 100mm, tread width 24mm, overall height 124mm with a Load capacity 75kg.



	NAME	DATE	 BIL Group Ltd, Porte Marsh Road, Calne Wiltshire, SN11 9BW, United Kingdom Tel +44 (0)1249 822 222 Fax: +44 (0)1249 822 300 www.bilgroup.co.uk	
DRAWN	Matt	11/12/17	TITLE	
APPROVED BY	Chris	11/12/17	BZRA 100VGRBH10	
SCALE	2.5	11/12/17	SIZE	DWG NO.
WEIGHT	0.318kg	11/12/17	A4	BILCW03BZRA100VGRBH10__01
UNLESS OTHERWISE SPECIFIED DIMENSIONS ARE IN MILLIMETRES			REV	1
Unspecified Tolerances Machining ± 0.25mm Fabrication ± 1mm			FILE NAME	BILCW03BZRA100VGRBH10__01.PDF SHEET 1 OF 1