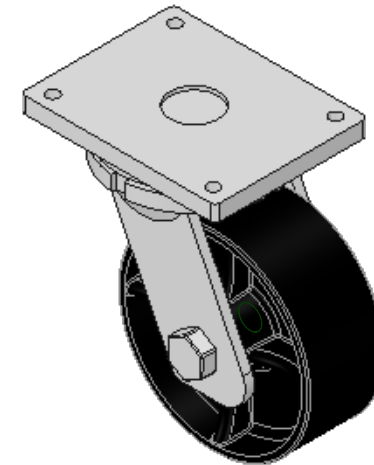
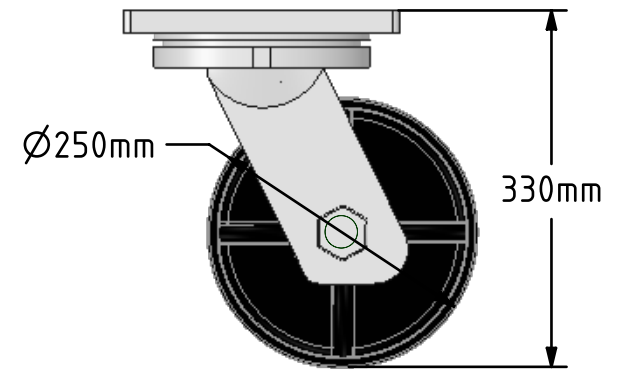
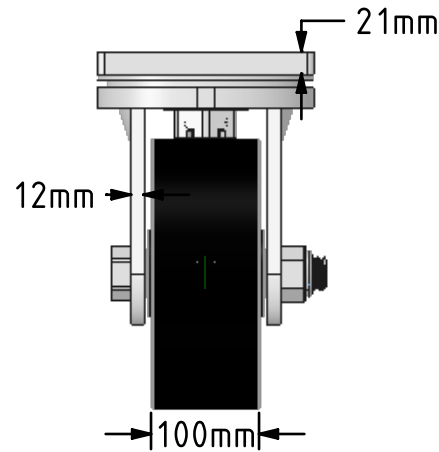
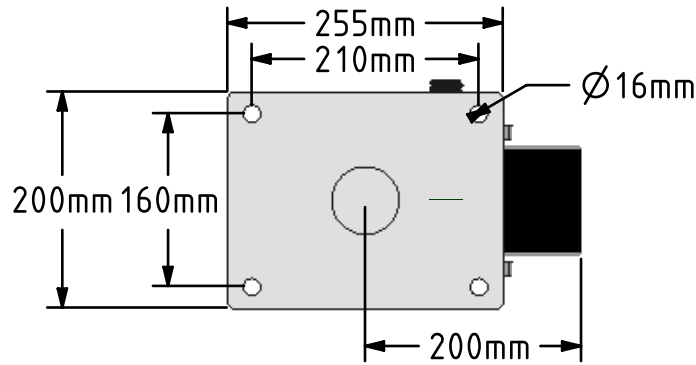


DRAWING DISCLAIMER
 COPYRIGHT OF THIS DRAWING IS RESERVED BY BIL GROUP LTD. IT IS ISSUED ON CONDITION THAT IT IS NOT REPRODUCED, COPIED, OR DISCLOSED TO A THIRD PARTY EITHER WHOLLY OR IN PART WITHOUT THE CONSENT IN WRITING OF BIL GROUP LTD.



Description:
 BZQXX250STTT

Fabricated swivel castor with a top plate fixing fitted with a ductile steel wheel with taper bearings. Wheel diameter 250mm, tread width 100mm, overall height 330mm, top plate 255mm x 200mm, hole centres 200mm x 160mm. Load capacity 5450kg.



	NAME	DATE
DRAWN	Matt	04/06/18
APPROVED BY	Chris	04/06/18
SCALE	1:7	04/06/18
WEIGHT	34.836kg	04/06/18

UNLESS OTHERWISE SPECIFIED DIMENSIONS ARE IN MILLIMETRES
 Unspecified Tolerances
 Machining ± 0.25mm
 Fabrication ± 1mm

 BIL Group Ltd, Porte Marsh Road, Calne Wiltshire, SN11 9BW, United Kingdom
 Tel +44 (0)1249 822 222 Fax: +44 (0)1249 822 300
 www.bilgroup.co.uk

TITLE
 BZQXX250STTT

SIZE	DWG NO.	REV
A4	BILCW03BZQXX250STTT_01	1
FILE NAME	BILCW03BZQXX250STTT_01.PDF SHEET 1 OF 1	