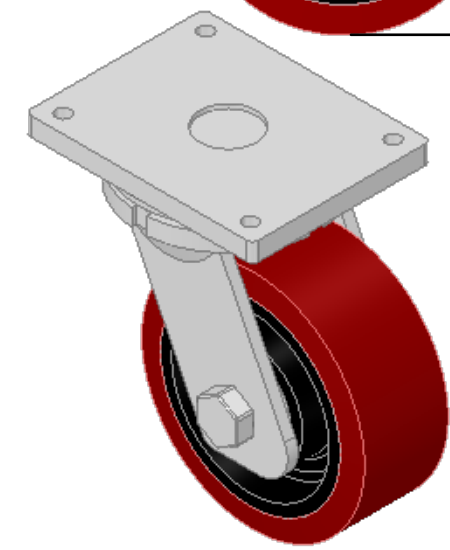
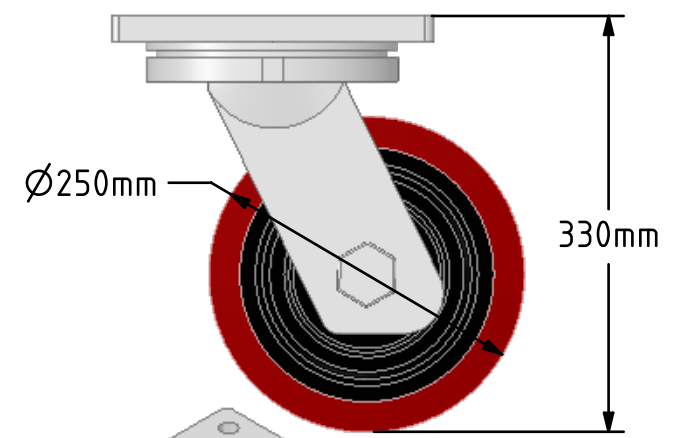
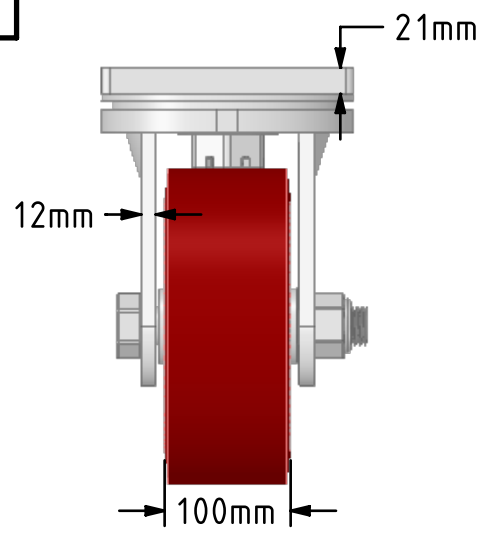
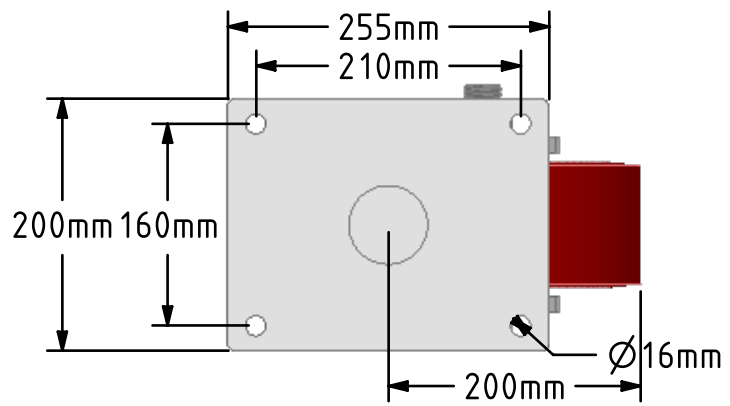



DRAWING DISCLAIMER
 COPYRIGHT OF THIS DRAWING IS RESERVED BY BIL GROUP LTD. IT IS ISSUED ON CONDITION THAT IT IS NOT REPRODUCED, COPIED, OR DISCLOSED TO A THIRD PARTY EITHER WHOLLY OR IN PART WITHOUT THE CONSENT IN WRITING OF BIL GROUP LTD.



Description:
 BZQXX250PTBJ
 Fabricated swivel castor with a top plate fixing fitted with a polyurethane wheel on a cast iron centre with ball bearings. Wheel diameter 250mm, tread width 100mm, overall height 330mm, top plate 255mm x 200mm, hole centres 210mm x 160mm. Load capacity 2500kg.



	NAME	DATE	BIL Group Ltd, Porte Marsh Road, Calne Wiltshire, SN11 9BW, United Kingdom Tel +44 (0)1249 822 222 Fax: +44 (0)1249 822 300 www.bilgroup.co.uk	
DRAWN	Matt	21/09/18	 TITLE BZQXX250PTBJ	
APPROVED BY	Chris	21/09/18		
SCALE	1:6	21/09/18		
WEIGHT	34.351kg	21/09/18		
UNLESS OTHERWISE SPECIFIED DIMENSIONS ARE IN MILLIMETRES			SIZE	DWG NO.
Unspecified Tolerances Machining ± 0.25mm Fabrication ± 1mm			A4	BILCW03BZQXX250PTBJ_01
			REV	1
			FILE NAME	BILCW03BZQXX250PTBJ_01.PDF SHEET 1 OF 1