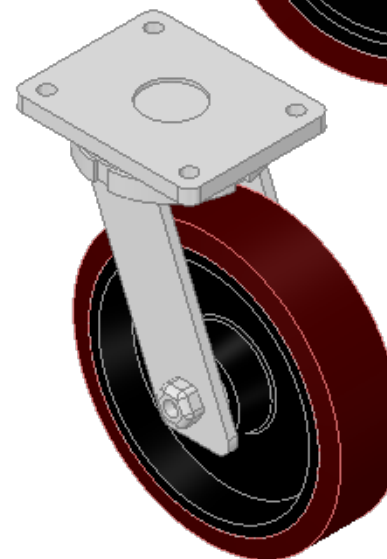
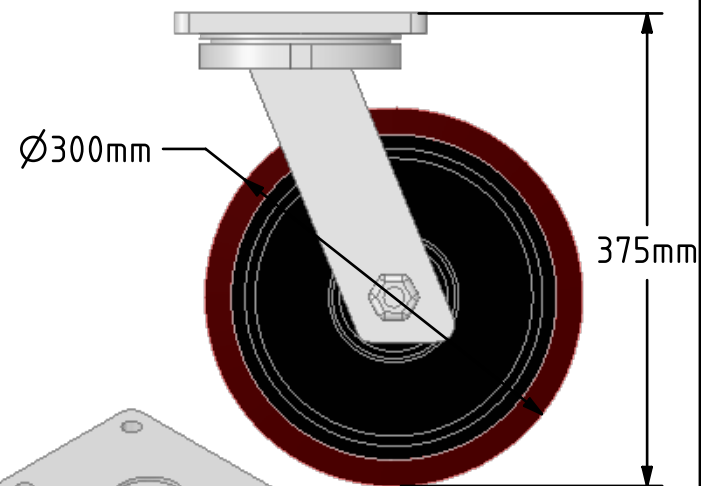
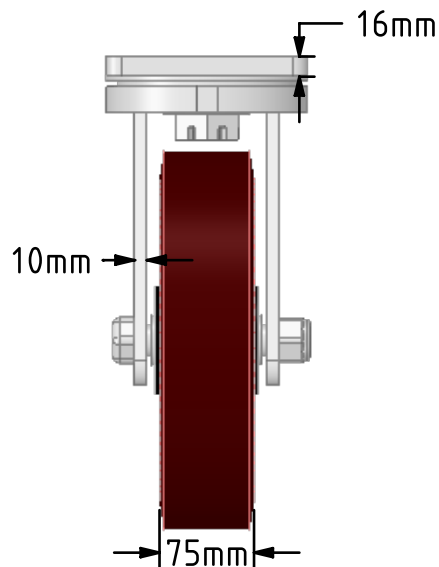
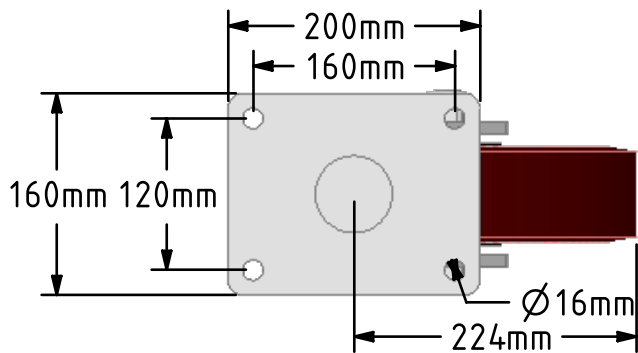


**DRAWING DISCLAIMER**  
 COPYRIGHT OF THIS DRAWING IS RESERVED BY BIL GROUP LTD. IT IS ISSUED ON CONDITION THAT IT IS NOT REPRODUCED, COPIED, OR DISCLOSED TO A THIRD PARTY EITHER WHOLLY OR IN PART WITHOUT THE CONSENT IN WRITING OF BIL GROUP LTD.



**Description:**  
 BZQX300PTBJ

Fabricated swivel castor with a top plate fixing fitted with a brown polyurethane tyre cast iron centred wheel with ball bearings. Wheel diameter 300mm, tread width 75mm, overall height 375mm, top plate 200mm x 160mm, hole centres 160mm x 120mm. Load capacity 2200kg.



	NAME	DATE
DRAWN	Matt	10/09/18
APPROVED BY	Tim W	10/09/18
SCALE	1:6	10/09/18
WEIGHT	23.775kg	10/09/18

**BIL** Group Ltd, Porte Marsh Road, Calne  
 Wiltshire, SN11 9BW, United Kingdom  
 Tel +44 (0)1249 822 222 Fax: +44 (0)1249 822 300  
 www.bilgroup.co.uk

TITLE	BZQX300PTBJ	
-------	-------------	--

UNLESS OTHERWISE SPECIFIED DIMENSIONS ARE IN MILLIMETRES  Unspecified Tolerances Machining ± 0.25mm Fabrication ± 1mm	SIZE	DWG NO.	REV
	A4	BILCW03BZQX300PTBJ__01	1
FILE NAME		BILCW03BZQX300PTBJ__01.PDF	SHEET 1 OF 1