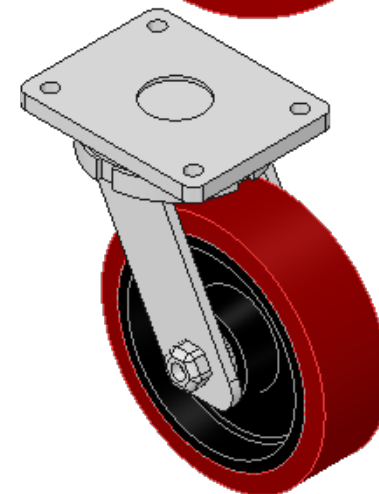
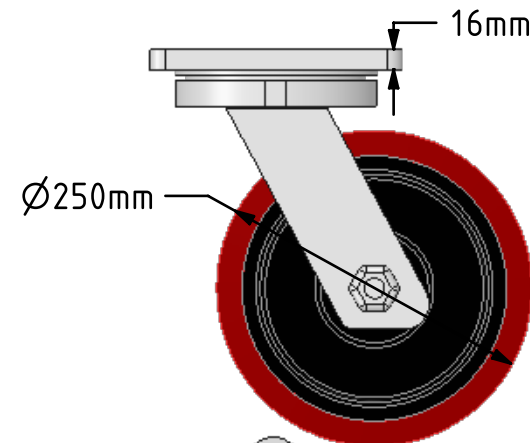
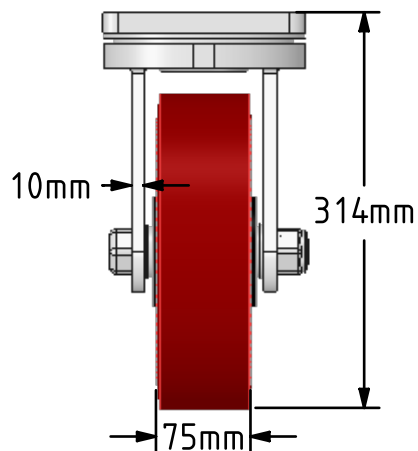
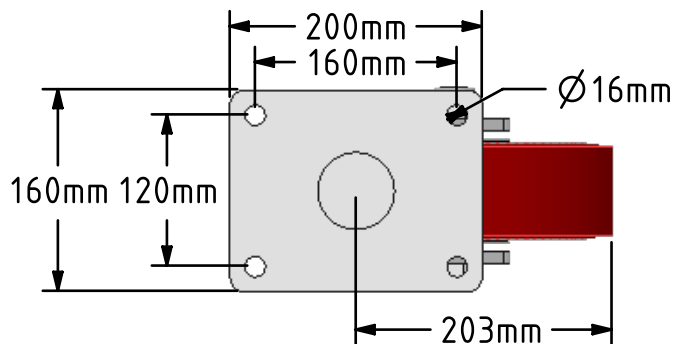


DRAWING DISCLAIMER
 COPYRIGHT OF THIS DRAWING IS RESERVED BY BIL GROUP LTD. IT IS ISSUED ON CONDITION THAT IT IS NOT REPRODUCED, COPIED, OR DISCLOSED TO A THIRD PARTY EITHER WHOLLY OR IN PART WITHOUT THE CONSENT IN WRITING OF BIL GROUP LTD.



Description:
 BZQX250PTBJ

Fabricated swivel castor with a top plate fixing fitted with a brown polyurethane tyre cast iron centred wheel with ball bearings. Wheel diameter 250mm, tread width 75mm, overall height 314mm, top plate 200mm x 160mm, hole centres 160mm x 120mm. Load capacity 1800kg.



	NAME	DATE
DRAWN	Matt	04/06/18
APPROVED BY	Chris	04/06/18
SCALE	1:6	04/06/18
WEIGHT	20.603kg	04/06/18

UNLESS OTHERWISE SPECIFIED DIMENSIONS ARE IN MILLIMETRES

Unspecified Tolerances
 Machining ± 0.25mm
 Fabrication ± 1mm



BIL Group Ltd, Porte Marsh Road, Calne
 Wiltshire, SN11 9BW, United Kingdom
 Tel +44 (0)1249 822 222 Fax: +44 (0)1249 822 300
 www.bilgroup.co.uk

TITLE

BZQX250PTBJ

SIZE DWG NO.

A4

BILCW03BZQX250PTBJ_01

REV

1

FILE NAME

BILCW03BZQX250PTBJ_01.PDF

SHEET 1 OF 1