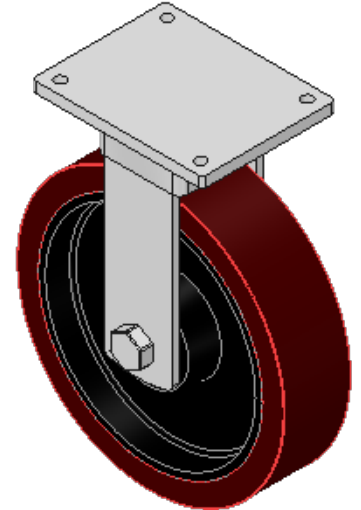
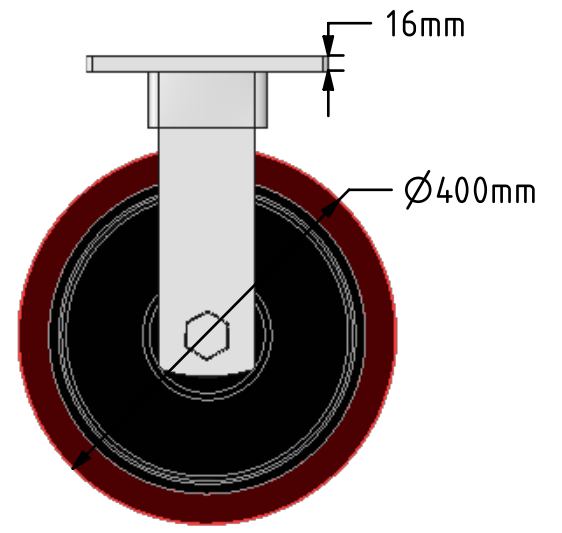
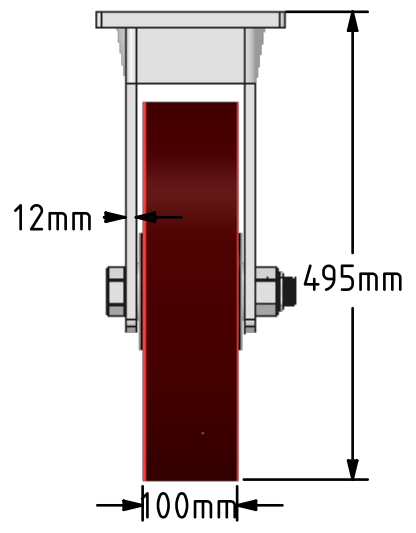
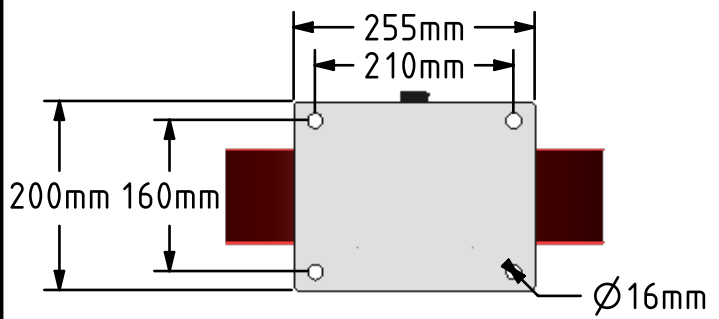
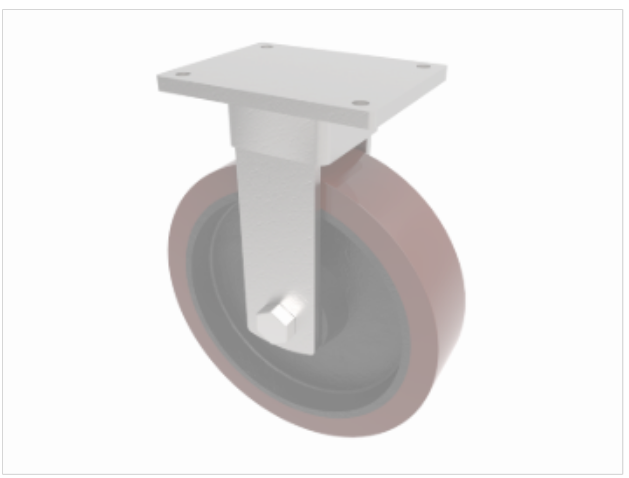



DRAWING DISCLAIMER
 COPYRIGHT OF THIS DRAWING IS RESERVED BY BIL GROUP LTD. IT IS ISSUED ON CONDITION THAT IT IS NOT REPRODUCED, COPIED, OR DISCLOSED TO A THIRD PARTY EITHER WHOLLY OR IN PART WITHOUT THE CONSENT IN WRITING OF BIL GROUP LTD.



Description:
 BZQFXX400PTBJ
 Fabricated fixed castor with a top plate fixing fitted with a polyurethane on cast iron wheel with ball bearings. Wheel diameter 400mm, tread width 100mm, overall height 495mm, top plate 255mm x 200mm, hole centres 210mm x 160mm. Load capacity 3500kg.



	NAME	DATE	 BIL Group Ltd, Porte Marsh Road, Calne Wiltshire, SN11 9BW, United Kingdom Tel +44 (0)1249 822 222 Fax: +44 (0)1249 822 300 www.bilgroup.co.uk
DRAWN	Matt	08/01/18	
APPROVED BY	Chris	08/01/18	
SCALE	1:8	08/01/18	
WEIGHT	44.904kg	08/01/18	
UNLESS OTHERWISE SPECIFIED DIMENSIONS ARE IN MILLIMETRES Unspecified Tolerances Machining ± 0.25mm Fabrication ± 1mm			TITLE BZQFXX400PTBJ
SIZE	DWG NO.		REV
A4	BILCW03BZQFXX400PTBJ_01		1
FILE NAME	BILCW03BZQFXX400PTBJ_01.PDF		SHEET 1 OF 1