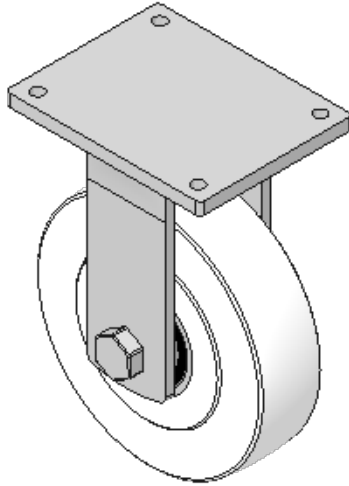
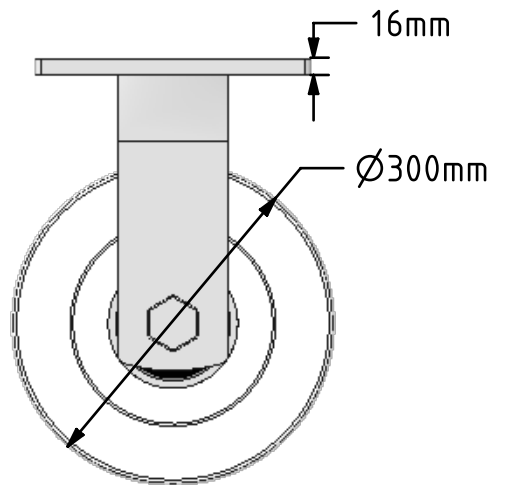
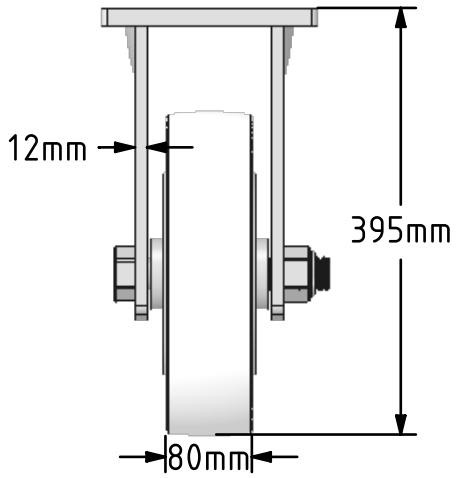
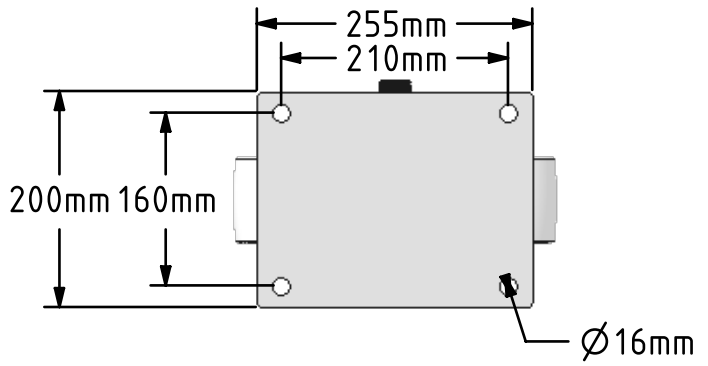


DRAWING DISCLAIMER  
 COPYRIGHT OF THIS DRAWING IS RESERVED BY BIL GROUP LTD. IT IS ISSUED ON CONDITION THAT IT IS NOT REPRODUCED, COPIED, OR DISCLOSED TO A THIRD PARTY EITHER WHOLLY OR IN PART WITHOUT THE CONSENT IN WRITING OF BIL GROUP LTD.



Description:  
 BZQFXX300NYBJ  
 Fabricated fixed castor with a top plate fixing fitted with a heavy duty white nylon wheel with ball bearings. Wheel diameter 300mm, tread width 80mm, overall height 380mm, top plate 255mm x 200mm, hole centres 210mm x 160mm. Load capacity 7000kg.



	NAME	DATE
DRAWN	Matt	02/10/17
APPROVED BY	Chris	02/10/17
SCALE	1:7	02/10/17
WEIGHT	22.727kg	02/10/17

 BIL Group Ltd, Porte Marsh Road, Calne  
 Wiltshire, SN11 9BW, United Kingdom  
 Tel +44 (0)1249 822 222 Fax: +44 (0)1249 822 300  
 www.bilgroup.co.uk

TITLE	
BZQFXX300NYBJ	

UNLESS OTHERWISE SPECIFIED DIMENSIONS ARE IN MILLIMETRES  
 Unspecified Tolerances  
 Machining ± 0.25mm  
 Fabrication ± 1mm

SIZE	DWG NO.	REV
A4	BILCW03BZQFXX300NYBJ_01	1
FILE NAME	BILCW03BZQFXX300NYBJ_01.PDF SHEET 1 OF 1	