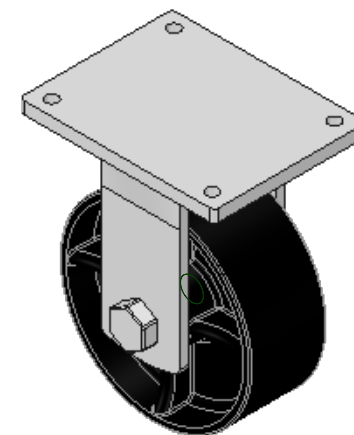
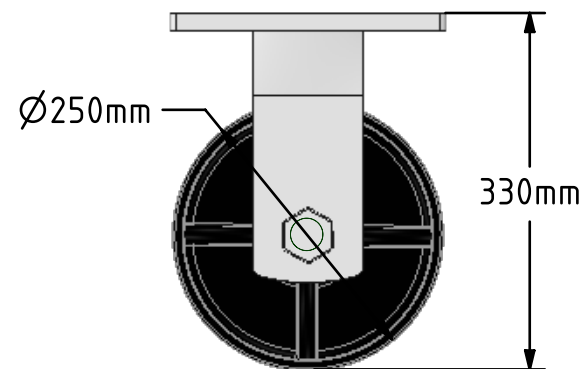
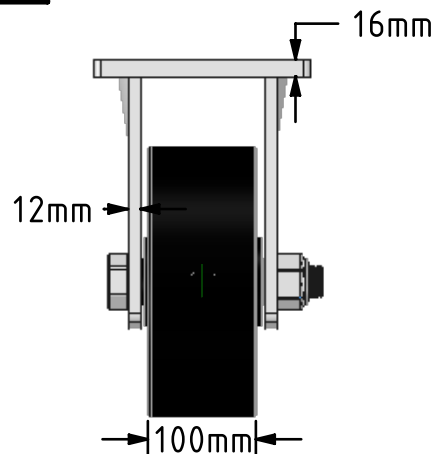
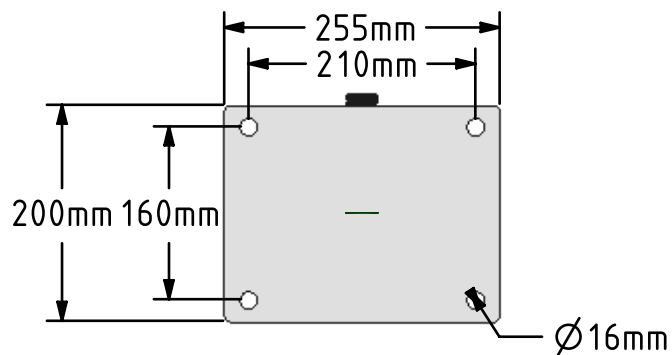



DRAWING DISCLAIMER  
 COPYRIGHT OF THIS DRAWING IS RESERVED BY BIL GROUP LTD. IT IS ISSUED ON CONDITION THAT IT IS NOT REPRODUCED, COPIED, OR DISCLOSED TO A THIRD PARTY EITHER WHOLLY OR IN PART WITHOUT THE CONSENT IN WRITING OF BIL GROUP LTD.



Description:  
 BZQFXX250STTT

Fabricated fixed castor with a top plate fixing fitted with a black painted ductile cast steel wheel with taper roller bearings. Wheel diameter 250mm, tread width 100mm, overall height 330mm, top plate 255mm x 200mm, hole centres 210mm x 160mm. Load capacity 5400kg.



	NAME	DATE	BIL Group Ltd, Porte Marsh Road, Calne Wiltshire, SN11 9BW, United Kingdom Tel +44 (0)1249 822 222 Fax: +44 (0)1249 822 300 www.bilgroup.co.uk	
DRAWN	Matt	04/06/18		
APPROVED BY	Chris	04/06/18		
SCALE	1:7	04/06/18		
WEIGHT	26.989kg	04/06/18		
UNLESS OTHERWISE SPECIFIED DIMENSIONS ARE IN MILLIMETRES			TITLE	
Unspecified Tolerances Machining ± 0.25mm Fabrication ± 1mm			BZQFXX250STTT	
SIZE A4		DWG NO. BILCW03BZQFXX250STTT_01	REV 1	
FILE NAME BILCW03BZQFXX250STTT_01.PDF			SHEET 1 OF 1	