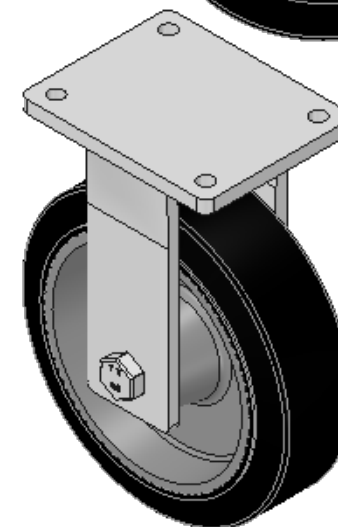
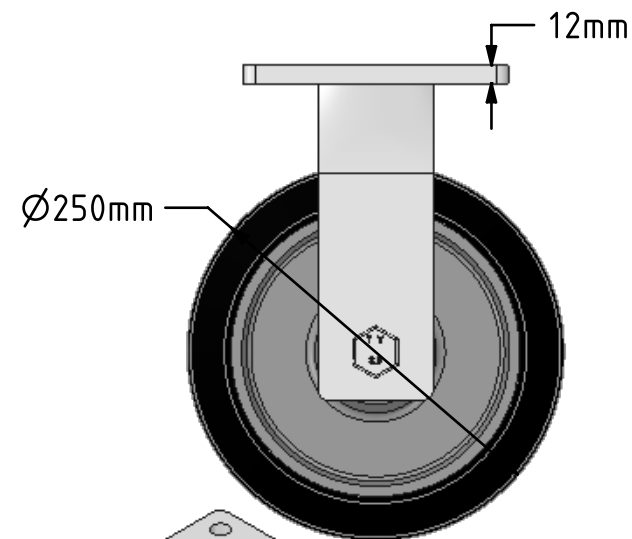
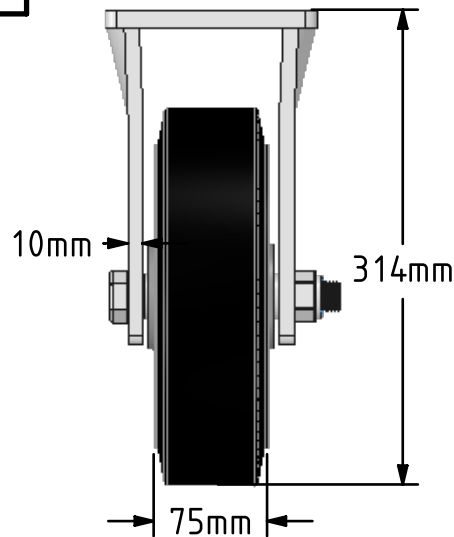
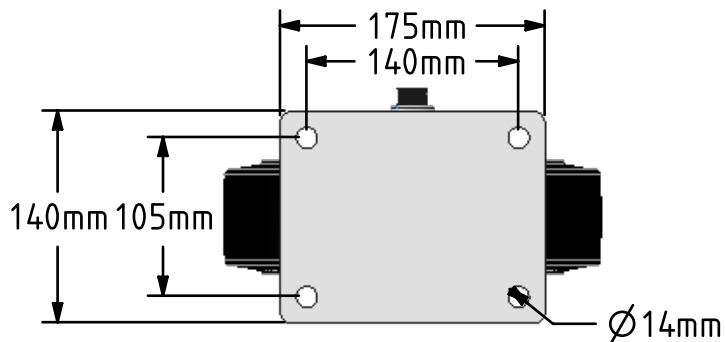


DRAWING DISCLAIMER


COPYRIGHT OF THIS DRAWING IS RESERVED BY BIL GROUP LTD. IT IS ISSUED ON CONDITION THAT IT IS NOT REPRODUCED, COPIED, OR DISCLOSED TO A THIRD PARTY EITHER WHOLLY OR IN PART WITHOUT THE CONSENT IN WRITING OF BIL GROUP LTD.



Description:
BZQF250CUBJ

Fabricated fixed castor with a flat plate fixing fitted with a black elastic rubber tyred cast iron centred wheel with ball bearing. Wheel diameter 250mm, tread width 75mm, overall height 314mm, plate size 175mm x 140mm, hole centres 140mm x 105mm. Load capacity 700kg at 4kph
 - At 6 kph speed, the load of each wheel is advised to be 80% of the load at 4kph
 - At 10 kph speed, the load of each wheel is advised to be 55% of the load at 4 kph.
 - At 16 kph speed, the load of each wheel is advised to be 45% of the load at 4kph.
 - At 20 kph speed, the load of each wheel is advised to be 35% of the load at 4 kph.
 - for speeds over 20 kph please request the details from our testing department.



	NAME	DATE	 BIL Group Ltd, Porte Marsh Road, Calne Wiltshire, SN11 9BW, United Kingdom Tel +44 (0)1249 822 222 Fax: +44 (0)1249 822 300 www.bilgroup.co.uk
DRAWN	Matt	31/05/18	
APPROVED BY	Tim W	31/05/18	
SCALE	1:5	31/05/18	
WEIGHT	12.897kg	31/05/18	
UNLESS OTHERWISE SPECIFIED DIMENSIONS ARE IN MILLIMETRES			TITLE
Unspecified Tolerances Machining ± 0.25mm Fabrication ± 1mm			BZQF250CUBJ SIZE DWG NO. REV A4 BILCW03BZQF250CUBJ_01 1
			FILE NAME BILCW03BZQF250CUBJ_01.PDF SHEET 1 OF 1