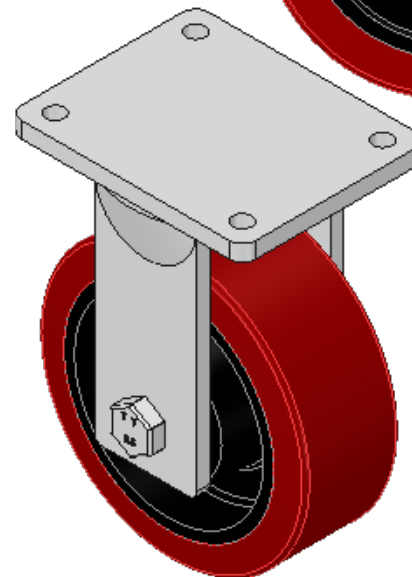
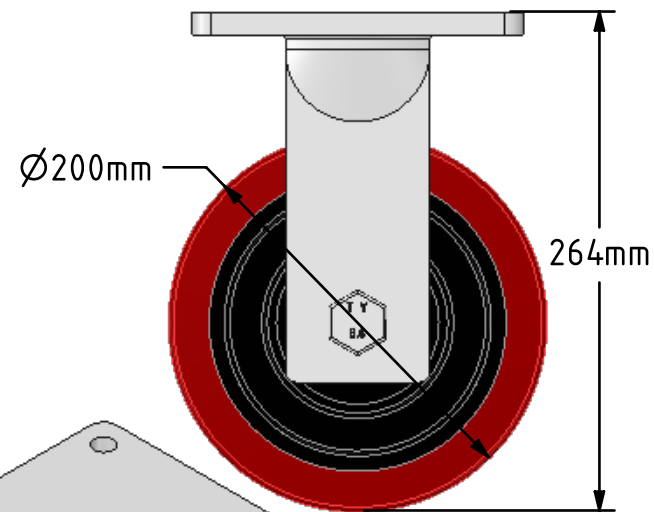
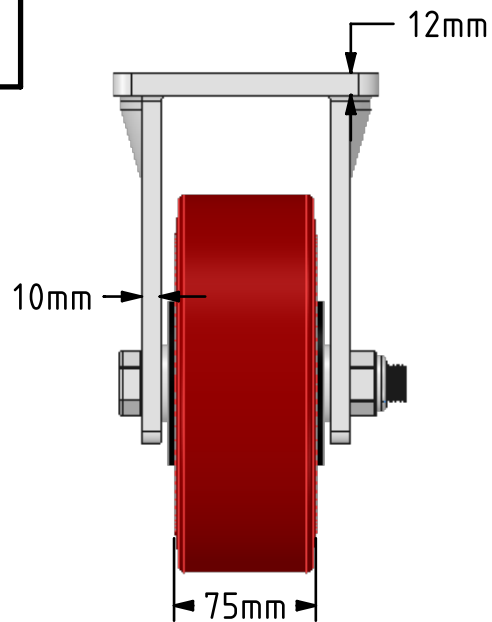
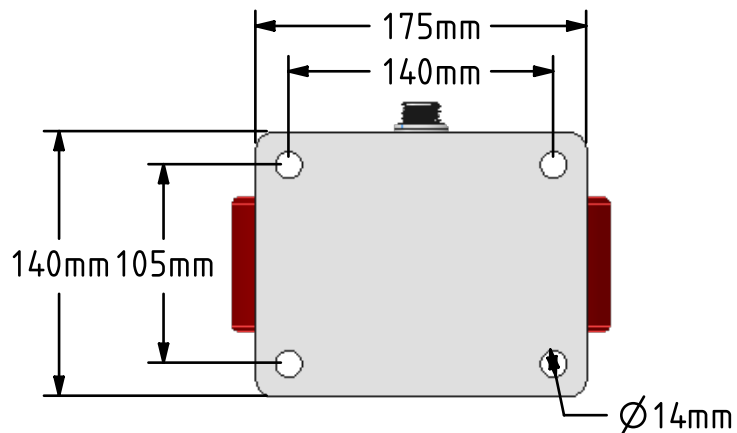
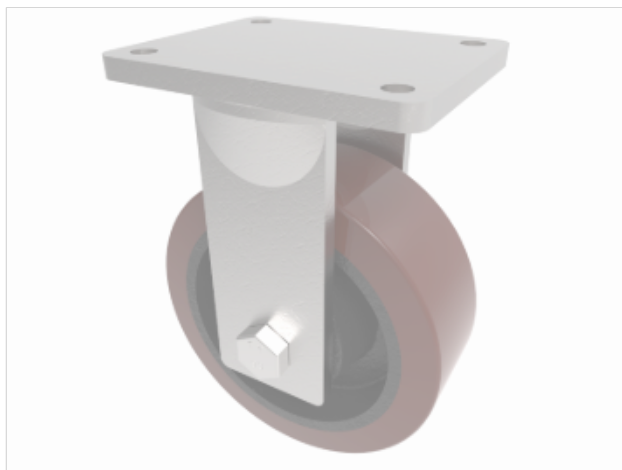


DRAWING DISCLAIMER
 COPYRIGHT OF THIS DRAWING IS RESERVED BY BIL GROUP LTD. IT IS ISSUED ON CONDITION THAT IT IS NOT REPRODUCED, COPIED, OR DISCLOSED TO A THIRD PARTY EITHER WHOLLY OR IN PART WITHOUT THE CONSENT IN WRITING OF BIL GROUP LTD.



Description:
 BZQF200PTBJ

Fabricated fixed castor with a top plate fixing fitted with a polyurethane tyre on a cast iron centred wheel with ball bearings. Wheel diameter 200mm, tread width 75mm, overall height 264mm, top plate 175mm x 140mm, hole centres 140mm x 105mm. Load capacity 1600kg.



	NAME	DATE
DRAWN	Matt	16/07/18
APPROVED BY	Chris	16/07/18
SCALE	1:4	16/07/18
WEIGHT	12.088kg	16/07/18

UNLESS OTHERWISE SPECIFIED DIMENSIONS ARE IN MILLIMETRES

Unspecified Tolerances
 Machining ± 0.25mm
 Fabrication ± 1mm



BIL Group Ltd, Porte Marsh Road, Calne
 Wiltshire, SN11 9BW, United Kingdom
 Tel +44 (0)1249 822 222 Fax: +44 (0)1249 822 300
 www.bilgroup.co.uk

TITLE

BZQF200PTBJ

SIZE DWG NO.

A4

BILCW03BZQF200PTBJ__01

REV

1

FILE NAME BILCW03BZQF200PTBJ__01.PDF

SHEET 1 OF 1