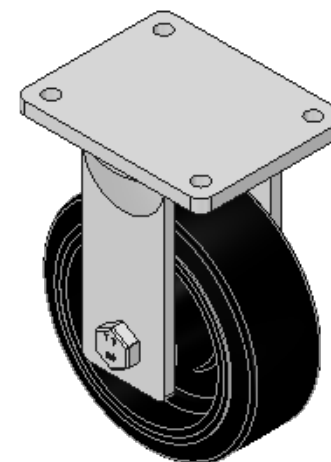
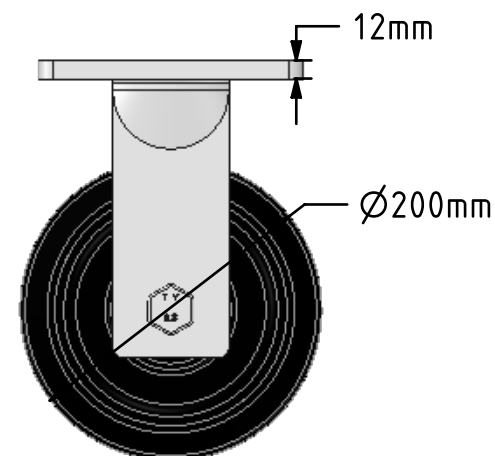
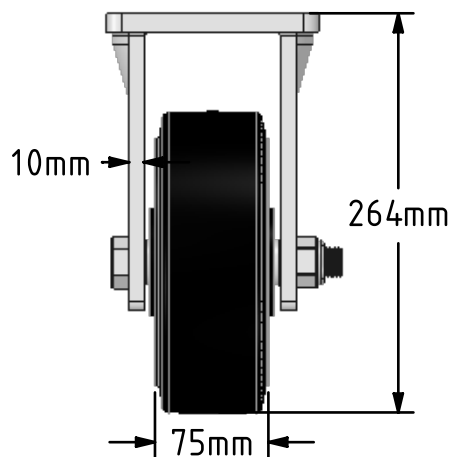
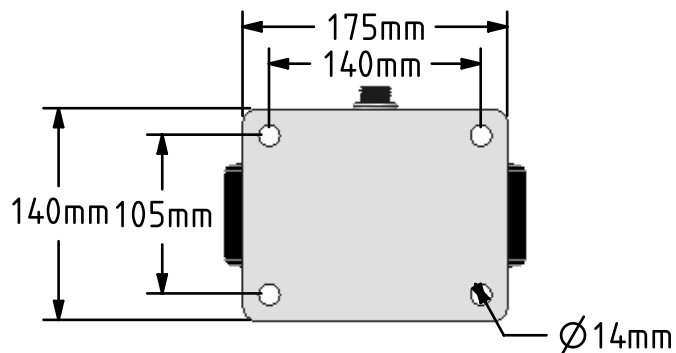



DRAWING DISCLAIMER
 COPYRIGHT OF THIS DRAWING IS RESERVED BY BIL GROUP LTD. IT IS ISSUED ON CONDITION THAT IT IS NOT REPRODUCED, COPIED, OR DISCLOSED TO A THIRD PARTY EITHER WHOLLY OR IN PART WITHOUT THE CONSENT IN WRITING OF BIL GROUP LTD.



Description:
 BZQF200CRBJ

Fabricated swivel castor with a top plate fixing fitted with a black elastic rubber tyred cast iron centred wheel with ball bearings. Wheel diameter 200mm, tread width 75mm, overall height 264mm, top plate 175mm x 140mm, hole centres 140mm x 105mm, Load capacity 650kg.



	NAME	DATE	BIL Group Ltd, Porte Marsh Road, Calne Wiltshire, SN11 9BW, United Kingdom Tel +44 (0)1249 822 222 Fax: +44 (0)1249 822 300 www.bilgroup.co.uk	
DRAWN	Matt	12/01/18		
APPROVED BY	Chris	12/01/18		
SCALE	1:5	12/01/18		
WEIGHT	10.613kg	12/01/18		
UNLESS OTHERWISE SPECIFIED DIMENSIONS ARE IN MILLIMETRES			SIZE	DWG NO.
Unspecified Tolerances Machining ± 0.25mm Fabrication ± 1mm			A4	BILCW03BZQF200CRBJ_01
			FILE NAME	BILCW03BZQF200CRBJ_01.PDF
			TITLE	BZQF200CRBJ
			REV	1
			SHEET	1 OF 1