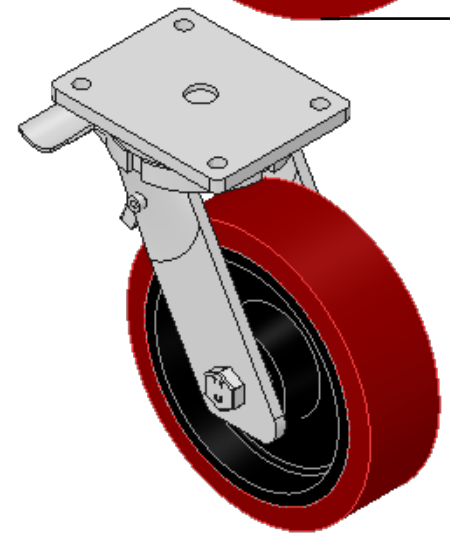
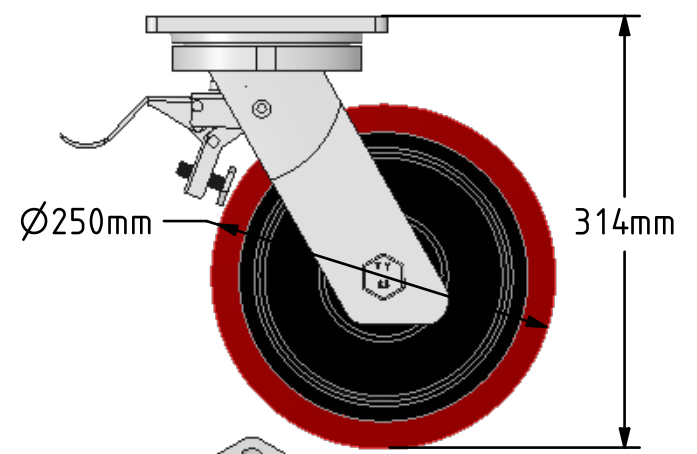
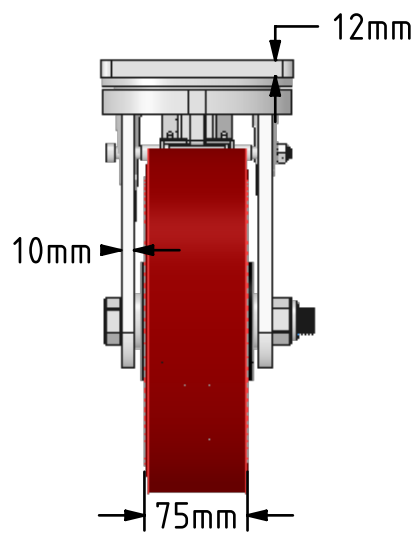
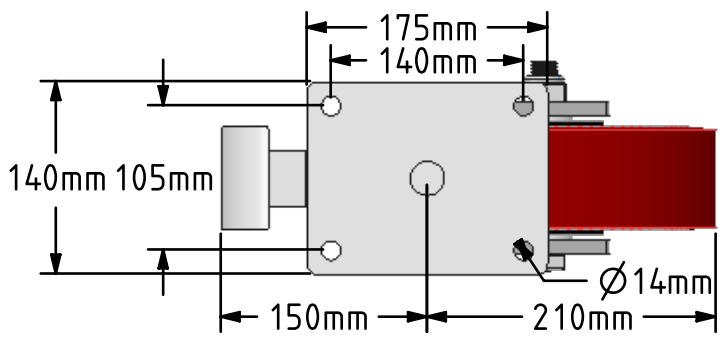



DRAWING DISCLAIMER
 COPYRIGHT OF THIS DRAWING IS RESERVED BY BIL GROUP LTD. IT IS ISSUED ON CONDITION THAT IT IS NOT REPRODUCED, COPIED, OR DISCLOSED TO A THIRD PARTY EITHER WHOLLY OR IN PART WITHOUT THE CONSENT IN WRITING OF BIL GROUP LTD.



Description:
 BZQ250PTBJSWB
 Fabricated swivel castor with a flat plate fixing fitted with a brown polyurethane tyre on cast iron centred wheel with ball bearings and a total lock brake. Wheel diameter 250mm, tread width 75mm, overall height 314mm, plate size 175mm x 140mm, hole centres 140mm x 105mm. Load capacity 1800kg.



	NAME	DATE	 BIL Group Ltd, Porte Marsh Road, Calne Wiltshire, SN11 9BW, United Kingdom Tel +44 (0)1249 822 222 Fax: +44 (0)1249 822 300 www.bilgroup.co.uk
DRAWN	Matt	23/02/18	
APPROVED BY	Chris	23/02/18	
SCALE	2:11	23/02/18	
WEIGHT	18.027kg	23/02/18	
UNLESS OTHERWISE SPECIFIED DIMENSIONS ARE IN MILLIMETRES Unspecified Tolerances Machining ± 0.25mm Fabrication ± 1mm			TITLE BZQ250PTBJSWB
SIZE	DWG NO.	REV	
A4	BILCW03BZQ250PTBJSWB_01	1	
FILE NAME		SHEET 1 OF 1	
BILCW03BZQ250PTBJSWB_01.PDF			