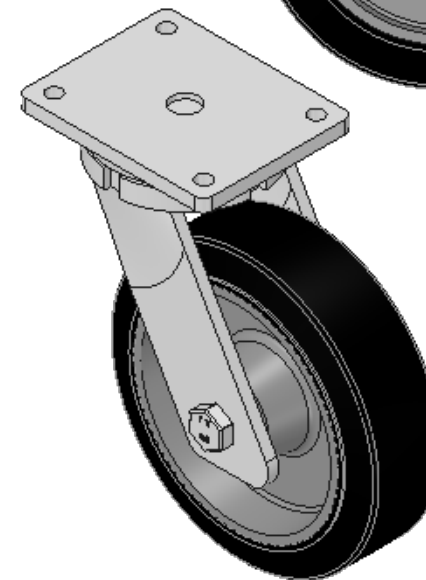
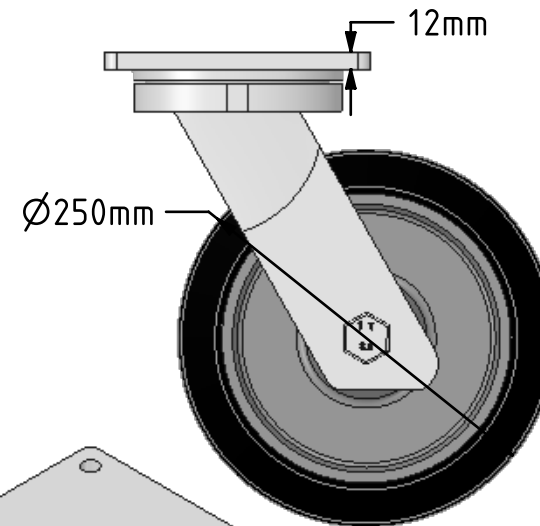
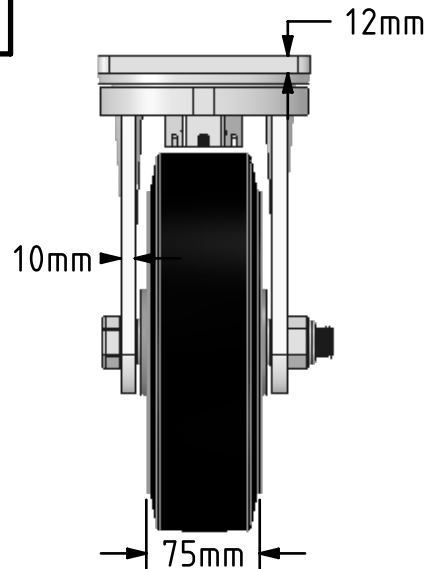
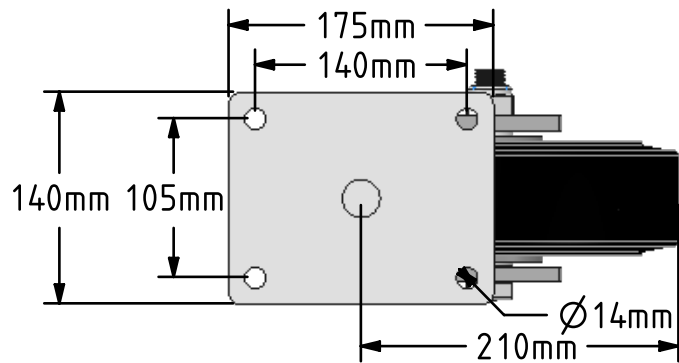


DRAWING DISCLAIMER

COPYRIGHT OF THIS DRAWING IS RESERVED BY BIL GROUP LTD. IT IS ISSUED ON CONDITION THAT IT IS NOT REPRODUCED, COPIED, OR DISCLOSED TO A THIRD PARTY EITHER WHOLLY OR IN PART WITHOUT THE CONSENT IN WRITING OF BIL GROUP LTD.




Description:
BZQ250CUBJ

Fabricated swivel castor with a flat plate fixing fitted with a black elastic rubber tyred cast iron centred wheel with ball bearing. Wheel diameter 250mm, tread width 75mm, overall height 314mm, plate size 175mm x 140mm, hole centres 140mm x 105mm. Load capacity 700kg at 4kph

- At 6 kph speed, the load of each wheel is advised to be 80% of the load at 4kph.
- At 10 kph speed, the load of each wheel is advised to be 55% of the load at 4 kph.
- At 16 kph speed, the load of each wheel is advised to be 45% of the load at 4kph.
- At 20 kph speed, the load of each wheel is advised to be 35% of the load at 4 kph.
- for speeds over 20 kph please request the details from our testing department.



	NAME	DATE	 BIL Group Ltd, Porte Marsh Road, Calne Wiltshire, SN11 9BW, United Kingdom Tel +44 (0)1249 822 222 Fax: +44 (0)1249 822 300 www.bilgroup.co.uk
DRAWN	Matt	20/03/18	
APPROVED BY	Chris	20/03/18	
SCALE	1:5	20/03/18	
WEIGHT	15.105kg	20/03/18	
UNLESS OTHERWISE SPECIFIED DIMENSIONS ARE IN MILLIMETRES Unspecified Tolerances Machining ± 0.25mm Fabrication ± 1mm			TITLE BZQ250CUBJ
SIZE	DWG NO.		REV
A4	BILCW03BZQ250CUBJ_01		1
FILE NAME	BILCW03BZQ250CUBJ_01.PDF		SHEET 1 OF 1