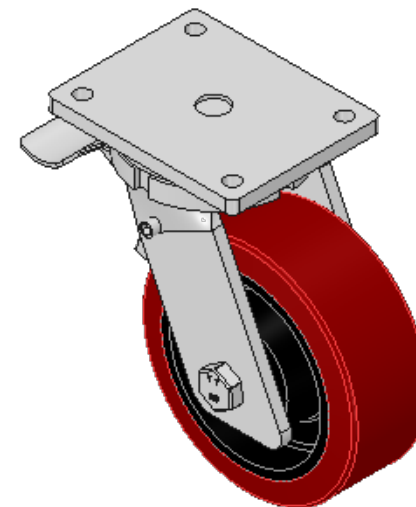
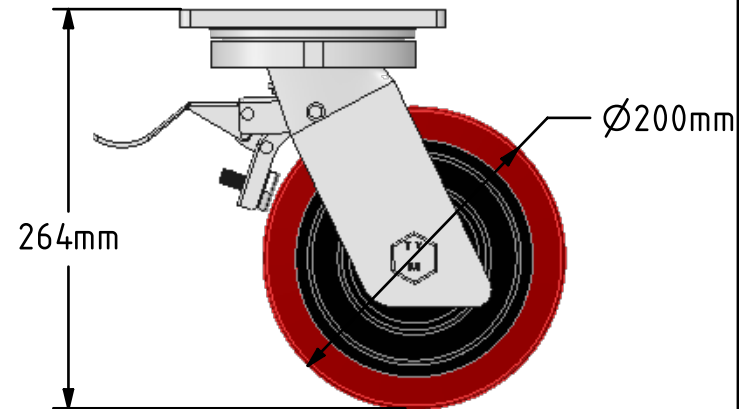
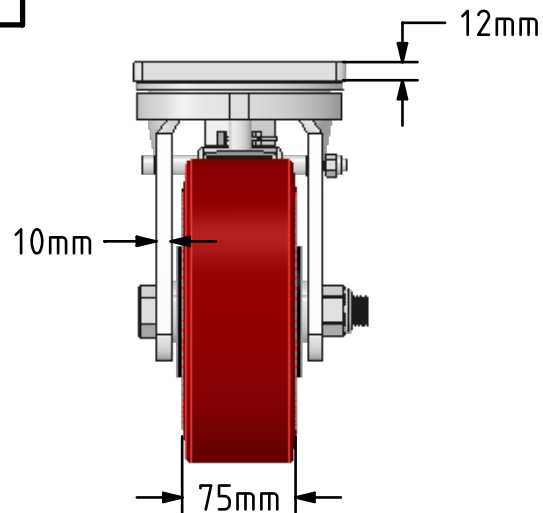
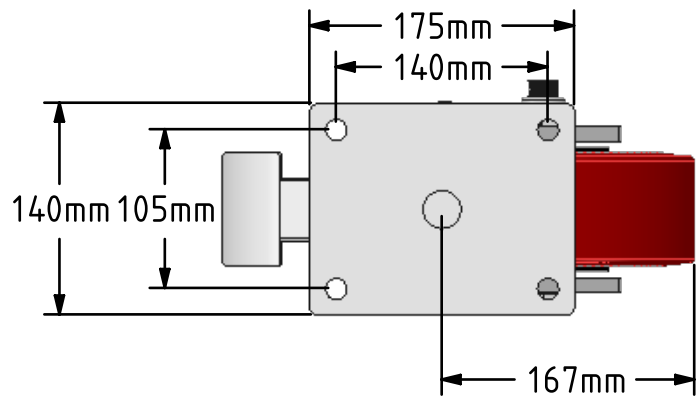



DRAWING DISCLAIMER
 COPYRIGHT OF THIS DRAWING IS RESERVED BY BIL GROUP LTD. IT IS ISSUED ON CONDITION THAT IT IS NOT REPRODUCED, COPIED, OR DISCLOSED TO A THIRD PARTY EITHER WHOLLY OR IN PART WITHOUT THE CONSENT IN WRITING OF BIL GROUP LTD.



Description:
 BZQ200PTBJSWB

Fabricated swivel castor with a top plate fixing fitted with a polyurethane on cast iron wheel with ball bearings and total lock brake. Wheel diameter 200mm, tread width 75mm, overall height 264mm, top plate 175mm x 140mm, hole centres 140mm x 105mm. Load capacity 1600kg.



	NAME	DATE	 BIL Group Ltd, Porte Marsh Road, Calne Wiltshire, SN11 9BW, United Kingdom Tel +44 (0)1249 822 222 Fax: +44 (0)1249 822 300 www.bilgroup.eu
DRAWN	Matt	29/09/16	
APPROVED BY	Tim W	29/09/16	
SCALE	1:5	29/09/16	
WEIGHT	14.618kg	29/09/16	
UNLESS OTHERWISE SPECIFIED DIMENSIONS ARE IN MILLIMETRES Unspecified Tolerances Machining ± 0.25mm Fabrication ± 1mm			TITLE BZQ200PTBJSWB
SIZE	DWG NO.	REV	
A4	BILCW03BZQ200PTBJSWB_01	1	
FILE NAME		BILCW03BZQ200PTBJSWB_01.PDF	SHEET 1 OF 1