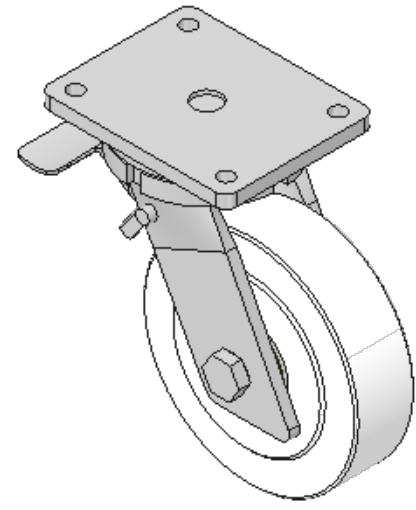
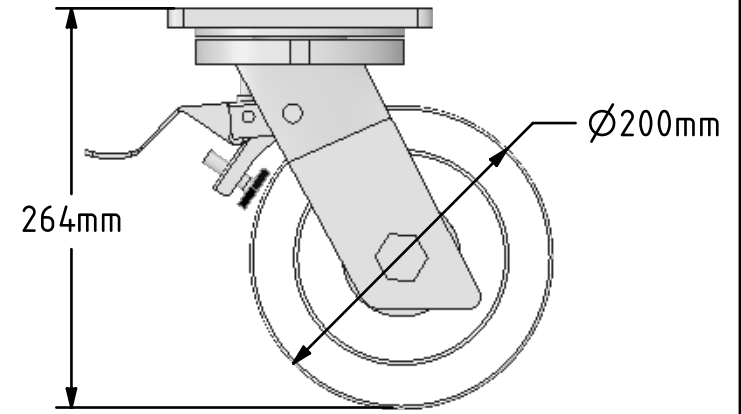
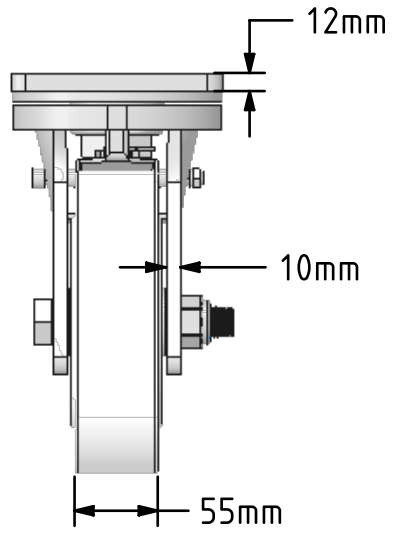
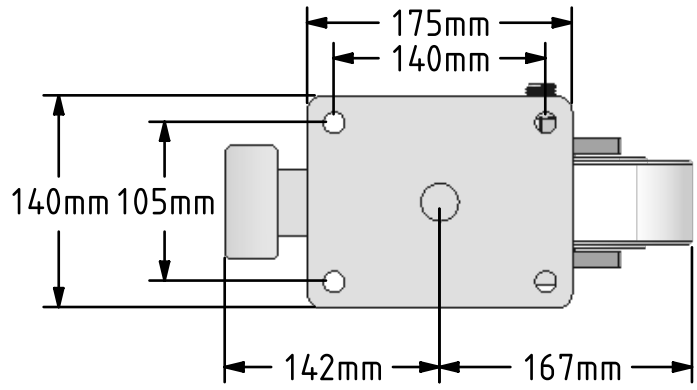


DRAWING DISCLAIMER
 COPYRIGHT OF THIS DRAWING IS RESERVED BY BIL GROUP LTD. IT IS ISSUED ON CONDITION THAT IT IS NOT REPRODUCED, COPIED, OR DISCLOSED TO A THIRD PARTY EITHER WHOLLY OR IN PART WITHOUT THE CONSENT IN WRITING OF BIL GROUP LTD.



Description:
 BZQ200NYBJSWB

Fabricated swivel castor with a top plate fixing fitted with a heavy duty white nylon wheel with ball bearings and a total lock brake. Wheel diameter 200mm, tread width 55mm, overall height 264mm, top plate 175mm x 140mm, hole centres 140mm x 105mm. Load capacity 3000kg.



	NAME	DATE
DRAWN	Matt	12/01/17
APPROVED BY	Tim W	12/01/17
SCALE	1:5	12/01/17
WEIGHT	10.56kg	12/01/17

BIL Group Ltd, Porte Marsh Road, Calne
 Wiltshire, SN11 9BW, United Kingdom
 Tel +44 (0)1249 822 222 Fax: +44 (0)1249 822 300
 www.bilgroup.co.uk

UNLESS OTHERWISE SPECIFIED DIMENSIONS ARE IN MILLIMETRES

Unspecified Tolerances
 Machining ± 0.25mm
 Fabrication ± 1mm

TITLE		REV
BZQ200NYBJSWB		1
SIZE	DWG NO.	FILE NAME
A4	BILCW03BZQ200NYBJSWB_01	BILCW03BZQ200NYBJSWB_01.PDF
		SHEET 1 OF 1