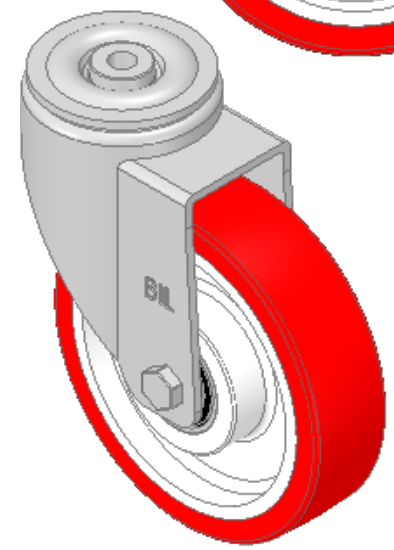
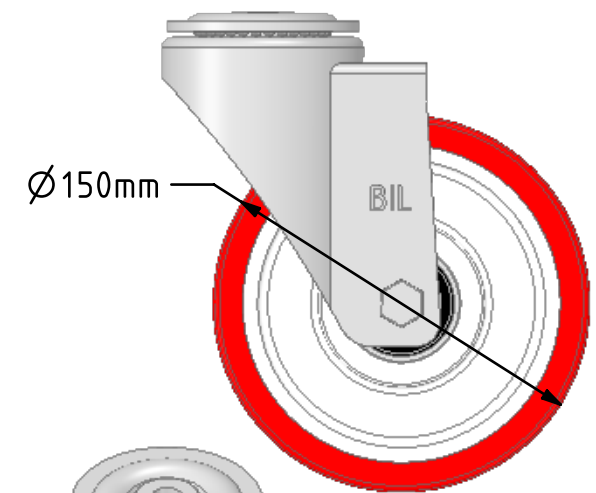
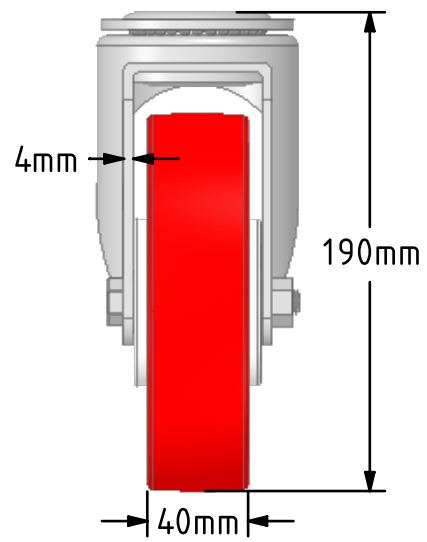
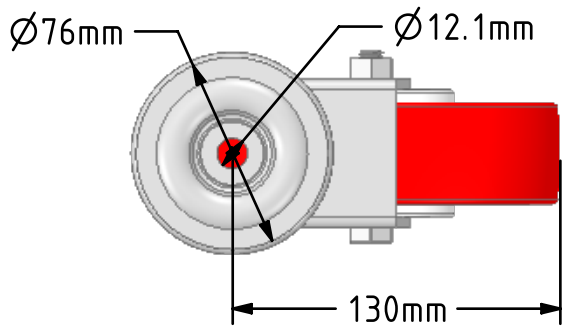


DRAWING DISCLAIMER  
 COPYRIGHT OF THIS DRAWING IS RESERVED BY BIL GROUP LTD. IT IS ISSUED ON CONDITION THAT IT IS NOT REPRODUCED, COPIED, OR DISCLOSED TO A THIRD PARTY EITHER WHOLLY OR IN PART WITHOUT THE CONSENT IN WRITING OF BIL GROUP LTD.



Description:  
 BZPHL150NPBJBH12  
 Pressed steel swivel castor with a 12mm bolt hole fitted with a red polyurethane tyre white nylon centred wheel with ball bearings. Wheel diameter 150mm, tread width 40mm, overall height 190mm Load capacity 400Kg.



	NAME	DATE
DRAWN	Matt	30/10/18
APPROVED BY	Chris	30/10/18
SCALE	1:3	30/10/18
WEIGHT	1.824kg	30/10/18

**BIL** BIL Group Ltd, Porte Marsh Road, Calne  
 Wiltshire, SN11 9BW, United Kingdom  
 Tel +44 (0)1249 822 222 Fax: +44 (0)1249 822 300  
 www.bilgroup.co.uk

TITLE		
BZPHL150NPBJBH12		
SIZE	DWG NO.	REV
A4	BILCW03BZPHL150NPBBH12_01	1
FILE NAME		SHEET 1 OF 1
BILCW03BZPHL150NPBBH12_01.PDF		

UNLESS OTHERWISE SPECIFIED DIMENSIONS ARE IN MILLIMETRES  
 Unspecified Tolerances  
 Machining ± 0.25mm  
 Fabrication ± 1mm