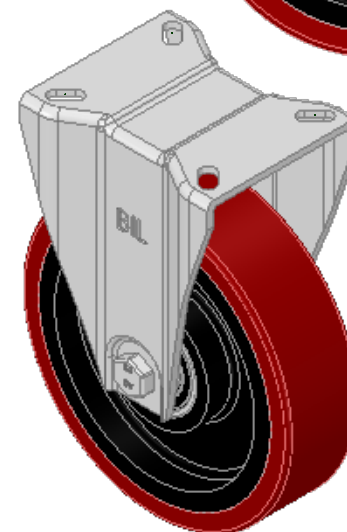
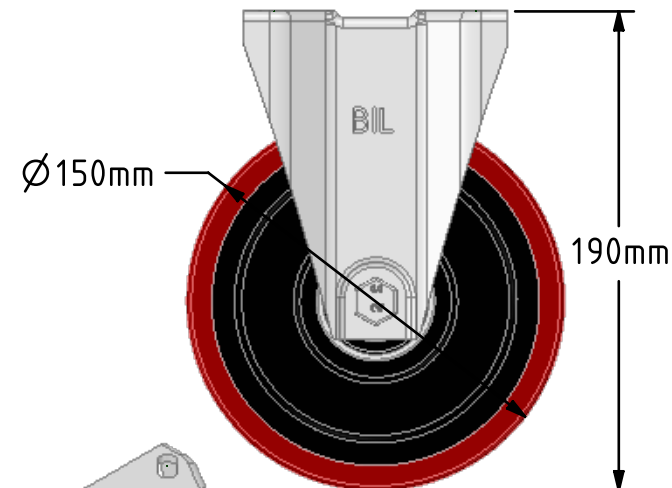
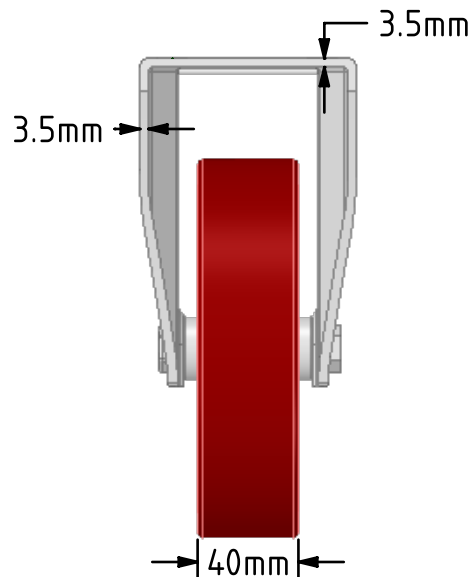
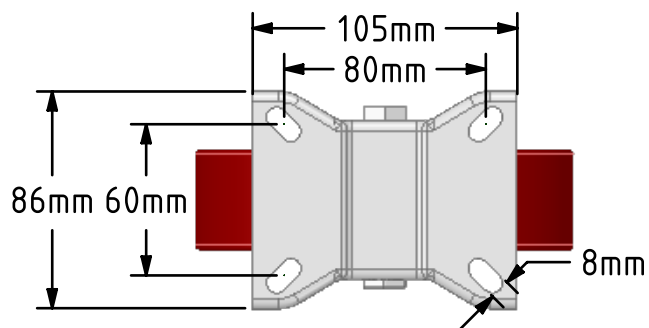
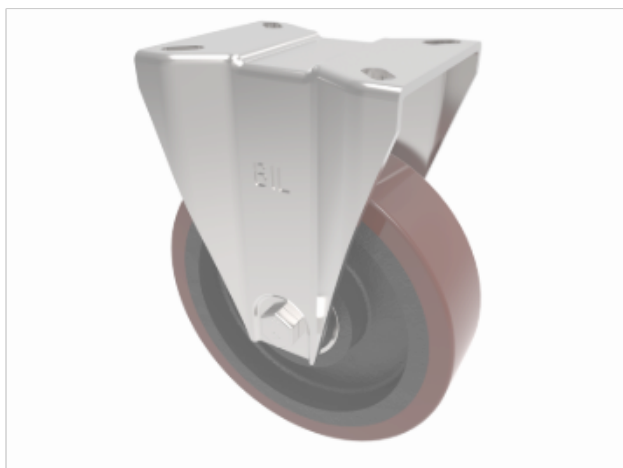


DRAWING DISCLAIMER
 COPYRIGHT OF THIS DRAWING IS RESERVED BY BIL GROUP LTD. IT IS ISSUED ON CONDITION THAT IT IS NOT REPRODUCED, COPIED, OR DISCLOSED TO A THIRD PARTY EITHER WHOLLY OR IN PART WITHOUT THE CONSENT IN WRITING OF BIL GROUP LTD.



Description:
 BZPHFL150PTBJ

Pressed steel fixed castor with a top plate fixing fitted with brown polyurethane tyre cast iron centred wheel with ball bearings. Wheel diameter 150mm, tread width 40mm, overall height 190mm, top plate 105mm x 85mm, hole centres 80mm x 60mm. Load capacity 400Kg.



	NAME	DATE
DRAWN	Matt	22/10/18
APPROVED BY	Chris	22/10/18
SCALE	1:3	22/10/18
WEIGHT	2.982kg	22/10/18

UNLESS OTHERWISE SPECIFIED DIMENSIONS ARE IN MILLIMETRES

Unspecified Tolerances
 Machining ± 0.25mm
 Fabrication ± 1mm



BIL Group Ltd, Porte Marsh Road, Calne
 Wiltshire, SN11 9BW, United Kingdom
 Tel +44 (0)1249 822 222 Fax: +44 (0)1249 822 300
 www.bilgroup.co.uk

TITLE

BZPHFL150PTBJ

SIZE DWG NO.
 A4 BILCW03BZPHFL150PTBJ__01

REV
 1

FILE NAME BILCW03BZPHFL150PTBJ__01.PDF SHEET 1 OF 1