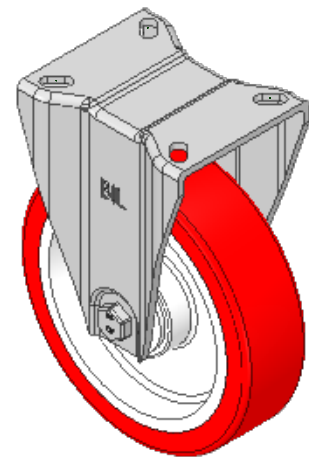
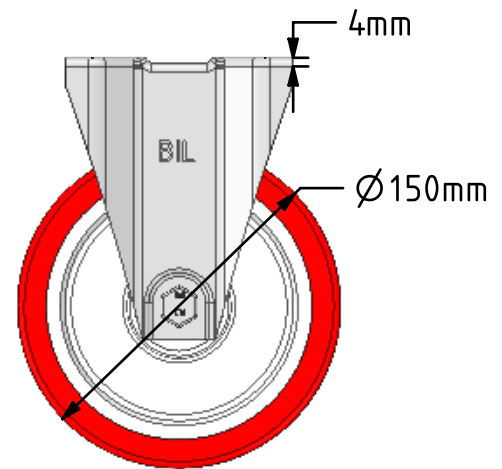
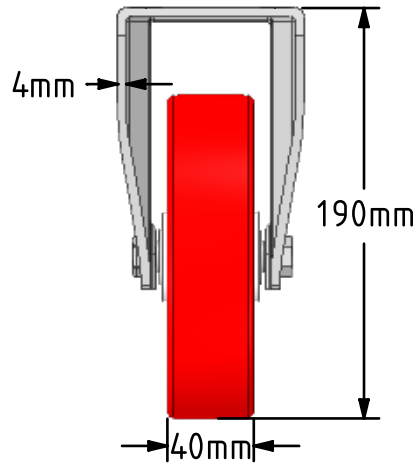
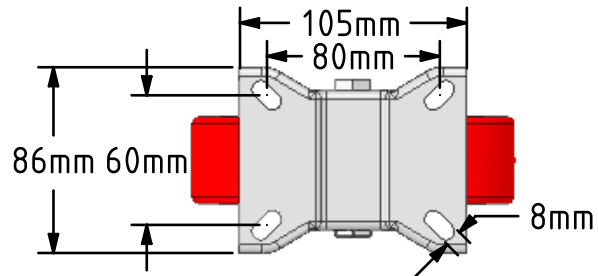



DRAWING DISCLAIMER
 COPYRIGHT OF THIS DRAWING IS RESERVED BY BIL GROUP LTD. IT IS ISSUED ON CONDITION THAT IT IS NOT REPRODUCED, COPIED, OR DISCLOSED TO A THIRD PARTY EITHER WHOLLY OR IN PART WITHOUT THE CONSENT IN WRITING OF BIL GROUP LTD.



Description:
BZPHFL150NPB
 Pressed steel fixed castor with a top plate fixing fitted with a red polyurethane tyre white nylon centred wheel with roller bearings. Wheel diameter 150mm, tread width 40mm, overall height 190mm, top plate 105mm x 85mm, hole centres 80mm x 60mm. Load capacity 350Kg.



	NAME	DATE	 BIL Group Ltd, Porte Marsh Road, Calne Wiltshire, SN11 9BW, United Kingdom Tel +44 (0)1249 822 222 Fax: +44 (0)1249 822 300 www.bilgroup.co.uk
DRAWN	Matt	08/04/19	
APPROVED BY	Tim W	08/04/19	
SCALE	2:7	08/04/19	
WEIGHT	1.304kg	08/04/19	
UNLESS OTHERWISE SPECIFIED DIMENSIONS ARE IN MILLIMETRES Unspecified Tolerances Machining ± 0.25mm Fabrication ± 1mm			TITLE BZPHFL 150NPB
SIZE	DWG NO.		REV
A4	BILCW03BZPHFL150NPB_02		2
FILE NAME	BILCW03BZPHFL150NPB_02.PDF		SHEET 1 OF 1